



## 10 QUICK HEAVY LIFTS

Mammoet's 5,000 tonne SK350 crane has replaced four coke drums at a Texas City refinery southeast of Houston, near Galveston, Texas. The crane had to lift out the 740 tonne, 53 metre high derrick to gain access to the old 270 tonne coking drums before replacing them with the new ones each weighing 448 tonnes. The job was carried out in two, 12 hour shifts.

## NEW SPIDER LIFT ENTRANT

A completely new Italian spider lift manufacturer, ILC Access Solutions, has launched its first model - the 18 metre articulated IL 18. A twin telescopic boomed 21 metre IL 21 will complete the initial line up. The company formed last September and is located in Bari with all of the key managers having been previously employed by spider lift manufacturer CMC.

The new IL 18 has a classic twin sigma type riser topped by a two section telescopic boom and articulated jib.

Maximum working height is 18 metres, while outreach is 8.3 metres at an up & over height of eight metres with the unrestricted platform capacity of 230kg. The new machine has an overall width of 780mm, while the tracks can extend to almost 1.2 metres for additional stability. Total weight is said to be 2,500kg and power is either petrol or battery electric.

The IL 21 has a working height of 20.8 metres, an outreach of 11 metres at a seven metre up & over height, while the maximum up & over height is eight metres with an outreach of 10 metres. The unrestricted/maximum platform capacity is 230kg. Most equipment is standard including telematics and remote diagnostics, radio remote controls, outrigger cylinder covers, automatic 'home' self-centering boom stowage and simplified auto levelling.



The IL 18



Note the nylon jib and riser rests

## 100 METRE RUTHMANN

Ruthmann will return to the 100 metre truck mounted lift market next year with the T-1000 HF - 22 years after it launched the first 100 metre truck mounted lift, the TTS1000. Few details on the new model have been released although we do know that it will use the same five section lower boom, four section upper boom and HF articulating jib as on the T900 HF but with longer boom sections.

The T1000 HF will be mounted on a five axle chassis such as the Scania T 500 with an all-up weight of 53 tonnes. The first unit has been sold to French rental company Joly Location based in Dijon, and a second is on order to an unnamed customer.



The new A45EH and S3246E at the launch

## NEW BOOMS AND SCISSORS FROM JCB

JCB has launched Electric and hybrid versions of its 45ft AJ48D articulated diesel boom lift that it currently sells in North America and introduced the first three of what will be a line of six electric drive slab scissor lifts. JCB will build all new aerial lift models at its facilities in India for global distribution.

### ARTICULATED BOOMS

The A45E and A45EH are basically one and the same machine which different power options. The maximum working height is almost 16 metres with a maximum outreach of 7.47 metres at an up and over height of 7.48 metres, an unrestricted platform capacity of 300kg and overall weight of around 7,800kg.

The 48 Volt, 400AH A45E is powered by eight 6V batteries - located on either side of the chassis - powering four AC wheel drive motors. The A45EH uses a three cylinder Kohler diesel driving a 7.5kWA generator to keep the machine's eight 6V batteries topped up. The engine is mounted on a swing-out tray for service and a 40 litre fuel tank is said to have enough fuel for a full week of typical use and the battery can also be plugged into a mains supply if available.



The A45E

### ELECTRIC DRIVE SCISSORS

JCB has also updated its slab electric scissor lift range from hydraulic to direct electric wheel motor drive, starting with the 19ft S1932E, 26ft S2632E and 32ft S3246E, followed later this year by the wider 26ft S2646E, the 40ft S4050E and 45ft S4550E. Working heights range from 7.7 to 15.8 metres, capacities from 230 to 450kg with overall widths of 810mm, 1.2 and 1.3 metres.

The S1932E is 50mm wider and 106kg lighter than the S1932 it replaces



## NEW CITY CENTRE MULTITEL

Italian truck mount and spider lift manufacturer Multitel has launched a new 17 metre articulated platform on a compact Piaggio Porter NP6 Long Range, powered by propane gas (LPG) or petrol/gasoline - LPG is less expensive while reducing pollution for easy entry to ultra-low emission zones.

The MXE 170 has a working height of 16.9 metres with a maximum outreach of 8.67 metres over the rear or 7.5 metres over the side. Maximum platform capacity is 250kg at an outreach of six metres.

Overall length is 5.85 metres, chassis width is 1.8 metres with fixed inboard jacking and an overall height of 2.55 metres, while the overall weight is only 2,800kg. The new machine has been designed for use in the narrow streets of historical town centres and other areas with limited space. Slew is 400 degrees, while the 1.2 metre by 700mm platform has 100 degrees of rotation. Features include Multitel's EVE load moment sensing, while telematics with GPS tracking, machine status display and remote diagnostics are optional.

Multitel Pagliero says that 2022 was its best ever in terms of production volumes, producing 2,220 truck mounted platforms and shipping 2,255. Weekly production levels have increased from 41 units in January to 51 by the end of the year. Of the units shipped, 30 percent were sold domestically and 70 percent exported.



## PLATFORM BASKET MAST BOOM



Italian spider and boom lift manufacturer Platform Basket has entered the mast boom market with a 10 metre tracked model with standard levelling jacks. Dubbed the Heron 10, it uses a version of the company's well proven rubber track chassis, with inboard mounted jacks that can level the machine on slopes of up to 10 degrees longitudinally or side to side. The unit can work without jacks on slopes of up to three degrees.

The mast is a classic five section open frame forklift type, topped by a jib which offers working heights of up to 9.6 metres and up to 3.4 metres of outreach at an up & over height of six metres through 360 degrees, with two person indoor and one person outdoor ratings.

The overall width is 1.2 metres, the overall height 1.99 metres and stowed length 3.25 metres.

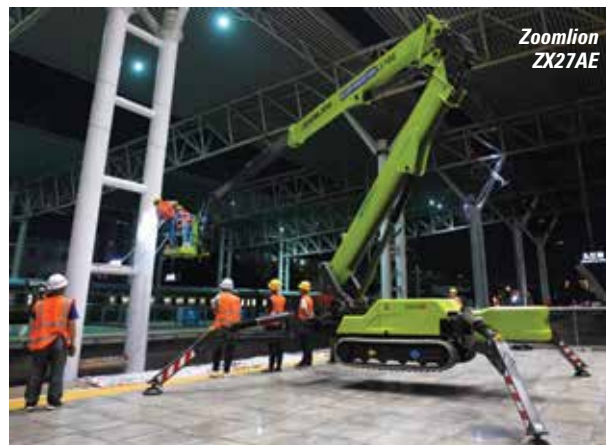
Available with diesel or lithium ion battery pack the total weights are 2,750kg for the diesel and 2,800kg for the electric version. Radio remote controls are standard. It can also be ordered with a jib mounted hoist/winch - that replaces the platform - with 35 metres of wire rope storage and a maximum lift capacity of 250kg.



## ZOOMLION SPIDER LIFTS

Zoomlion has produced its first spider lift, the 27 metre twin telescopic boom ZX27AE with lithium ion battery pack. The machine has a three section lower telescopic boom, with an over centre linkage to a three section top boom and articulating jib. Maximum outreach is 14.2 metres at an up & over height of 12.7 metres with 120kg in the platform while the unrestricted platform capacity is 230kg.

Overall width is 890mm and overall length of 5.7 metres with the platform removed, overall height is just over two metres. The widest outrigger spread is 4.48 metres, while auto level is standard. Total weight is 4,650kg. The first unit went to work at the Jiangxi Railway station in Jiangxi.



## FIRST VERSALIFT VTL 135 'ALL ELECTRIC'

Versalift UK has completed the first production unit of its 13.5 metre 'VTL 135 All Electric', van mounted lift. The battery electric powered VTL 135 superstructure was displayed at Vertikal Days on an all-electric Ford E-Transit chassis.

The new lift features a two section telescopic boom topped by an articulating jib, to offer a maximum outreach of just over eight metres without the need for stabilisers. The platform is capable of at least 20 full cycles on a single charge and is designed for telecommunications or street lighting applications. The spare cargo payload is 500kg after allowing for fuel, driver and passenger and the chassis boasts a range of up to 196 miles, topped up from 15 to 80 percent in 34 minutes with a fast charger.

*The VTL 135 All Electric at Vertikal Days*



## MEC'S FIRST MAST BOOM

California based MEC Aerial Work Platforms has launched its first mast boom, the 11.2 metre MME30-RJ with direct wheel motor AC electric drive.

The lift is essentially a MEC version of Dingli's AMWP11.5-8100 with 2.6 metres outreach at an up & over height of 7.6 metres with a maximum capacity of 227kg. The overall width is one metre and overall weight just under three tonnes. The platform is larger than usual for this type of machine, at one metre wide by 760mm deep. AGM maintenance free batteries are standard.



## 'FASTN' ACTIVE ANCHORAGE DEVICE

Haulotte has launched an active anchorage device that can detect if and when a harness lanyard has been attached and remains attached to the main anchor point on the platform of a boom lift.

The 'Fastn' system is quite different from other products on the market and has more in common with the seat belt warning system in cars. If a lanyard is not attached, the system will emit a beeping noise. After a pre-set time, a downward facing blue light will flash if the operator hasn't attached their lanyard in order to alert others.

One end of the Fastn attachment mechanism is connected to the platform's main anchor point, while the other end has the spring loaded lanyard attachment ring, pulled out with a nylon strap so that the lanyard can be attached quickly and easily. Fastn's cylinder mechanism has a built-in motion sensor which detects certain types of movement. Trying to cheat it with a spare carabiner or screwdriver will only work for around 30 seconds, as the absence of movement triggers the alarms. The same feature can also detect an operator who has passed out in the platform. Conversely should the operator be ejected from the platform, the system will detect the sudden movement and constant tension, triggering the alarm and flashing lights. The system's guardrail mounted 'nerve centre', also records activity - or lack of it - storing the information for later download via a USB port.

Haulotte claims the system can be installed in around 10 minutes with two plug-in type connections and be fitted to any type or make of machine as long as it has a dead-man foot pedal. The wire connection to the foot pedal is the only link to the machine's electrics,

However only one anchor point can be equipped with the system, Haulotte says that it is the responsibility of the person in charge of the controls to ensure that anyone else in the platform is also fully harnessed and attached to the other anchor points.



Applying tension to the Fastn device

## NATIONWIDE INSTALLS 'HARNESS ON'

UK rental company Nationwide Platforms, a division of Loxam, has begun installing its 'Harness On' device to its booms and truck mounted lifts.

The Harness On link is attached to the platform's main anchor point and wired into the platform controls and anyone planning to go up in the platform must attach their lanyard to the link to enable the controls. An indicator light allows operators to see when the device is working or if there is a fault.

The company is making the device available to any company that is interested in installing it. It hopes to have 6,000 booms equipped with the device by the end of the year.



The Harness On device

## ALL-ELECTRIC TRACKED CARRIER

Italian aerial lift and tracked carrier manufacturer Almac/AlmaCrawler has launched the all-electric, 'no hydraulic oil' compact 1.5 tonne capacity ML 1.5 FX tracked carrier. Overall width is 700mm, overall length 1.17 metres with a deck height of 500mm and overall weight of 465kg.

The carrier features two 5.3kW AC electric two speed direct drive track motors, the transport deck is steel checker plate and can be slid forward to provide easy access to the components. Power is supplied by a 55Ah maintenance free AGM battery pack, with an integrated onboard charger that takes the batteries from empty to fully charged in six hours. An Autec radio remote controller is standard.



The 1.5 tonne all-electric carrier

## NEW VAN MOUNT FROM COMET

Italian manufacturer Comet has launched a range of van mounted lifts starting with the 15 metre HVM 15 with telescopic boom and articulated jib with eight metres of outreach, mounted on a 3.5 tonne Ford Transit chassis.

The company's UK dealer, Hydraulic Platform Services is helping develop the range which will also include 11 and 13 metre models. Features include in-cab stabiliser controls with illuminated switches to alert the operator if the jacks are stowed or set for work then changed over to platform operation once the stabiliser set lights are on.



Comet's new 15m HVM 15



## VERTIKAL DAYS ON THE MOVE

This year's Vertikal Days - the biggest to date - saw products from more than 270 manufacturers on display. Two days of mostly sunny, warm weather encouraged more visitors than ever to visit the show with 27 new exhibitors reinforcing the claim to be one of the most diverse lifting equipment gatherings anywhere this year. There were also plenty of new product launches which is covered in the extended review starting on page 47.

Unfortunately, ownership of the Peterborough Show Ground changed earlier this year, with the new owners deciding to redevelop the whole site, rather than the half previously planned. That has forced Vertikal Days into a last minute search for a new venue for 2024 with a move to the Newark Showground the most likely. An announcement will be made shortly confirming the venue and dates - probably returning to a September slot.



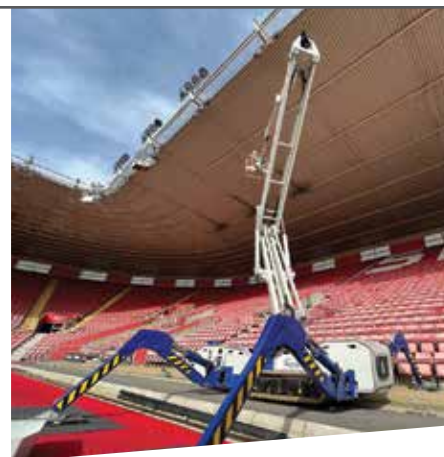
## ANOTHER EURO AT FROM XCMG

Chinese manufacturer XCMG has launched a second European All Terrain crane - the 120 tonne four axle XCA120E - which follows the 60 tonne three axle unveiled at Bauma last year.

The new crane boasts a seven section 66 metre main boom, topped by an 11.65 to 18.5 metre bi-fold swingaway extension, which can offset by up to 40 degrees. Two 7.1 metre lattice extension sections can be added between the boom nose and the swingaway for a maximum tip height of just over 96 metres and maximum radius of 60 metres. The crane is rated at a theoretical 2.5 metres and manages 80 tonnes at three metres.

An MTU diesel drives a 12 forward, two reverse speed ZF 12 TraXon transmission, with the three rear axles all driven, while all wheel steering is standard as is a retarder. The independent suspension system is similar in overall concept to that used by Grove. The overall width is 2.75 metres, depending on tyres, while the overall length is just over 14.3 metres. The outriggers have five working widths from fully retracted to seven metres. Maximum counterweight is 33 tonnes.

*XCMG has launched a second European All Terrain crane, the 120 tonne four axle XCA120E*



## TELESCOPIC AND ARTICULATED SPIDER LIFTS FROM 13 TO 52 METRES

Spider lifts at a higher level for 40 years



falconlifts.com

# SINOBOOM SUMMIT AND PRODUCT LAUNCHES

Chinese aerial lift manufacturer Sinoboom staged a series of events in Changsha, China last month to celebrate 15 years in business, break ground on a new facility, show off its updated production plant and launch three new products.

Events kicked off with a 'Global Partners Summit' with Sinoboom customers from Europe, North America, Southeast Asia and South America attending along with local customers. The event included a formal groundbreaking ceremony for the Sinoboom Phase II Intelligent Manufacturing Park, which the company says will take the level of automation and 'intelligent manufacturing' to new levels.

New product introductions included the new 52ft all-electric AB16EJ Plus/AB520EJ Plus articulated boom lift with twin sigma type risers, two section telescopic boom and articulating jib, providing a working height of 17.8 metres and three platform capacities - 250kg, 340kg and 454kg - with outreaches of nine, eight and seven metres respectively - all at an up and over height of 7.9 metres.

The 32ft AB10ERJN industrial zero tailswing articulated boom lift has dual risers, two section telescopic boom and articulating jib with 180 degrees of jib rotation as well as 180 degrees of platform rotation. The machine offers a working height of 11.6 metres along with 6.3 metres of outreach at an up & over height of 4.6 metres and a platform capacity of 230kg. It has an overall width of 1.19 metres and weighs 6,760kg.

The final new model is a classic 12ft mast type lift, the VM04E/VM12E, with a working height of 5.8 metres, a platform capacity of 227kg, direct electric drive, an overall length of 1.38 metres, an overall width of 780mm with an overall height of 1.6 metres while weighing 785kg. The new machine featured on the company's stand at APEX when it received an order for 200 units from Swedish sales and service company Liftab, all of which will apparently be delivered this year.



Product demonstration venue



The 32ft AB10ERJN



Sinoboom's new 12.5ft VM12E/VM4E

# PALFINGER eDRIVE ENTERS PRODUCTION

Following an extensive test programme which included more than 40,000km of road travel, Palfinger has launched the production version of its new 25 metre P 250 BK eDrive truck mounted lift on an Iveco eDaily all-electric chassis. The telescopic machine with jib offers a working height of 24.7 metres, an outreach of 16.9 metres and a platform capacity of 250kg.



# NEW PRESIDENT FOR SKYJACK

Skyjack president Ken McDougall is to retire at the end of the year and hand over to Charlie Patterson, currently vice president of international operations.

McDougall began his Skyjack career in 1987 as a tool designer with Skyjack's parent company Linamar, moving through increasingly senior roles including global sales, estimating manager and vice president of operations. He was first appointed as Skyjack president in 2008 returning in 2019 to steer the company through the pandemic, and organising the recent expansion in production capacity.

Charlie Patterson joined Skyjack in 2000 as UK sales manager having previously worked with Grove cranes and Manlift aerial work platforms. He went on to head up all of Skyjack's European operations and moved into his current role in 2014.



Ken McDougall



Charlie Patterson

# ELECTRIC JCBs FOR EMR AND RIWAL

EMR (European Metal Recycling) has ordered 50 all-electric industrial telehandlers, JCB's largest single order for electric telehandlers to date. They include the 3,000kg/four metre 30-19E and the slightly heavier 2,200kg/four metre 30-22E in a deal worth more than £3 million.

Riwal Germany has also ordered 50 JCB telehandlers including a mixture of six metre/2,500kg 525-60s, 9.5 metre/3,500kg 535-95's and two units of JCB's new six metre/2,500kg compact all-electric 525-60E in a deal worth around £2.6 million.

EMR has revenues in the region of £5 billion with around 3,000 employees working from 122 sites across the UK, USA, Germany and the Netherlands recycling more than 10 million tonnes of metals and plastics a year.



Oliver Conrad of Riwal Germany (L) and Martin Brokamp of JCB Germany, at the first handover of the Riwal machines in Cologne

## 3,500 TONNE SPREADER BEAM

Jan De Nul Group has ordered a 3,500 tonne spreader beam from Dutch heavy lift crane manufacturer Huisman. The massive beam is equipped with an automated sling handling system with remote controls powered by an on-board battery pack with integrated automatic charging system. Sadly Huisman would not disclose its inner workings.

The spreader beam will be used to lift monopiles for the largest offshore wind turbine foundations, and be used with Jan De Nul's 3,000 tonne Huisman Leg encircling crane onboard the Voltaire offshore jack-up installation vessel, and the new 5,000 tonne Huisman tub mounted crane on the Les Alizés heavy lift vessel, which will transport and install 107 monopile foundations and an offshore substation topside for Ørsted's Gode Wind 3 and Borkum Riffgrund 3 offshore wind farms in Germany.

The 3,000t spreader beam



## BMS AND JALO & JALO FORM JV

Danish crane and aerial lift rental company BMS has formed a Joint Venture with Finnish truck mounted lift rental company Jalo & Jalo.

The jointly held company JaloBMS will target growing demand for large truck mounted lifts from the mobile telecoms and wind turbine markets. The venture will not involve changes to the financial structure or ownership of either company but will promote a combined fleet and services with more than 100 large truck mounted platforms up to 104 metres, while offering a more extensive geographic coverage.

Sami Jalo will be chief executive, while Jens Enggaard of BMS is chairman. The business will initially focus on the Nordic region, where the partners already have a strong presence with 40 locations between them.

Jalo & Jalo  
BMS



## NEW PREMISES FOR LGMG

LGMG has relocated its North American headquarters to a brand new facility on the north side of Dallas, Texas. The new premises includes offices, a warehouse, meeting rooms and a training centre. It will stock replacement parts and new machines ready for fast delivery and will also feature a showroom of products marketed by the company in North America.

LGMG's new HQ





JEKKO  
jekko-cranes.com

# 2-In-1

## Crane And Glass Robot



DISCOVER THEM  
ONLINE!



**MPK06**

600 kg Max capacity  
Battery Powered



**MPK10**

990 kg Max capacity  
Battery Powered

# FINANCIALS ROUND-UP

**Ashtead** has reported another record year, with revenues up 24% to \$9.67 billion, made up as follows: **Sunbelt USA**: revenues increased 27% to \$8.26 billion, while operating profit jumped 33% to \$2.45 billion. **Sunbelt Canada**: saw revenues grow 32% to C\$827 million with operating profits up 17% to C\$ 167.4 million. **Sunbelt UK**: saw revenues dip 6% to £684.8 million, while operating profit dropped 25% to £65 million. Rental revenues however increased 6% to £429 million. Group capital expenditure increased 58% to \$3.77 billion.



UK rental group **Vp**, owner of **UK Forks**, **MEP** and **Brandon Hire Station** has reported a 6% rise in revenues to £371.5 million with growth coming from both the UK and overseas. Pre-tax profits declined 14% to £30.7 million. Capital expenditure for the year was flat.



Austrian crane, access and heavy lift group **Felbermayr** has acquired Bulgarian crane rental company **Maritza**.



**Snorkel** achieved full year revenues to the end of December of \$168.8 million up 9% on 2021, with a net profit of \$31.8 million compared to a loss of \$12 million last year. In the first quarter of 2023 the company achieved revenues of \$43.5 million, up 4.4% and reduced its losses to \$113,000 compared to \$4 million last year.



Dutch international rental company **Boels** achieved full year revenues of €1.47 billion up 11.5% on 2021. Pre-tax profit increased 15% to €115.1 million while capital expenditure increased 49% to €519.3 million.



Boels has also acquired Norwegian rental company **BAS Maskintuleie** through its Nordic subsidiary **Cramo**.



**Manitowoc Cranes**, parent of **Grove**, **National Crane** and **Potain** saw first quarter revenues increase 10.7% to \$508.3 million. Pre-tax profit more than doubled to \$20.7 million.



First quarter revenues at **Genie/Terex AWP** increased 24.4% to \$685.9 million, while operating profits increased 2.5 fold from \$32.5 million last year to \$83.1 million this year, reflecting the higher volumes and price increases.



US based **Herc Rentals** boosted revenues by 30% in the first quarter to \$740 million while pre-tax profits improved 12% to \$75 million. Capital expenditure was 16% higher at \$332 million.



Hiab and Kalmar owner **Cargotec** increased first quarter revenues 26% to €1.07 billion, while pre-tax profit more than tripled to €95.7 million. Net debt was cut by 31 percent to €393 million.



**Hiab** revenues were 27% higher at €432 million with operating profits up 41 percent to €61.4 million.



Revenues at **Kalmar** were 31% higher at €485 million while operating profits tripled to €62.8 million. **Cargotec** also says it is looking to change Kalmar and Hiab into two completely standalone companies.



First quarter revenues at **JLG** increased 35.1% to \$1.19 billion, operating profit was \$135 million compared to \$5.7 million last year, a 23 fold increase, due to higher pricing and volumes.



French Telehandler and aerial lift manufacturer **Manitou** increased its first quarter revenues 48% to €665 million with growth in all sectors.



**United Rentals** saw first quarter revenues improve 30% to \$3.28 billion, in part to the addition of the Ahern Rentals business in December. Pre-tax profits increased 23% to \$594 million. Capital expenditure in the quarter was \$797 million, up 66% on last year.



Spanish crane and aerial lift rental company **Grúas Aguilar** has acquired Catalan rental company **Grúas Serrat**.



US overhead crane manufacturer and rigging supplier **Mazzella** has acquired **John Sakach Company**.

First quarter sales at **Haulotte** were 45% up on the same period last year at €196.3 million - a record first quarter. The company also confirmed that its lenders have waived the need to meet agreed ratios for a further 12 months.



US crane and hoist rental company **Maxim Crane** reported first quarter revenues up 21% to \$253 million - a new record - with 12 months sales of \$945 million. EBITDA was 56% higher at \$59 million.



United Rentals has acquired **ChaseCo Rentals** of Missouri from founder and owner **Chase Darrah**.



Italian rental company **Mollo Noleggio** has acquired **PMP** in Friuli Venezia Giulia.



US rental group **REIC** (Rental Equipment Investment Corp) has acquired **Aim High Equipment rental** of Brighton, Colorado from owner **Amy Sepin**.



# FIRST RAIMONDI T187 DELIVERED

Belgian construction company ABHR has taken delivery of the first Raimondi T187 flat-top tower crane. Launched at Bauma, the T187 has a maximum capacity of 10 tonnes and jib length of 67.5 metres with a jib tip capacity of 1.6 tonnes.

The first Raimondi T187 on site



# NEW COMPANY TO DISTRIBUTE MIDI CRANES IN UK

UK tower crane company Ladybird Cranes has set up a new subsidiary - the Trailer Crane Company - to distribute the MiDi towable self-erecting tower crane product line.

The new company will focus on the Spanish manufacturer's three model LT range which all weigh less than 3.5 tonnes on the road. The line up includes the LT10, LT12 and LT14 with horizontal jib hook heights of 10, 12 and 14 metres respectively while 20 metres is possible on the LT14 with jib luffed. Maximum capacities are 400kg, 800kg/1,200kg and 1,500kg. The LT10 has a 10 metre jib, while the LT12 and LT14 have 14 metre jibs. Jib tip capacities are 300kg, 325kg and 350kg respectively.



A MiDi LT14 at work... and on tow



# XCMG TEAMS UP WITH GENESIS FOR UK

GENESIS  
EQUIPMENT SALES

XCMG

XCMG has appointed Genesis Equipment Sales - a new standalone company within Ballyvesey Holdings - as its sole aerial lift distributor in the UK.

The new company will hold new XCMG platforms in stock and provide product support from four regional hubs in England - in the midlands, the North, on the east side of London and one in the south west. Genesis will be overseen by Mark Kennedy who joined Ballyvesey in 2018 as managing director of Contract Plant Rental and more recently TDL Equipment.



(L-R) Eden Qiao of XCMG, Mark Kennedy of Genesis along with Hans Aarse and Edwin van der Laar of XCMG

FASSI CRANE

# WE ARE TECHNO



F1450R-HXP



F1750R-HXP



F1750R-HXP

TECHNO  
RANGE

- ▶ A much more powerful control unit
- ▶ Increased speed and data processing capacity
- ▶ New remote control interfaces and functions
- ▶ X-Design profile of the secondary arm
- ▶ An exponential increase in performance

www.fassi.com



INNOVATION • VERSATILITY • SAFETY  
CONTROL • PRECISION • EFFICIENCY

**FASSI**  
LEADER IN INNOVATION



# A09JE / A13JE-Li / A14JE / AR20JE

## ELECTRIC ARTICULATING BOOM LIFT

WORKING HEIGHT RANGING FROM **11** TO **21.58** METERS

MODELS	A09JE	A13JE-Li	A14JE	AR20JE
WORKING HEIGHT MAX.	11m	15m	15.8m	21.58m
PLATFORM CAPACITY	230kg	200kg	230kg	UNRESTRICTED 260kg RESTRICTED 350kg

**GREEN**  
TECH

**LOW**  
NOISE

**ZERO**  
EMISSION

**FASTER**  
CHARGING



**LINGONG HEAVY MACHINERY CO., LTD.**

Address: No. 2676, Kejia Road, Jinan, Shandong, China  
Email: sales@lmg.com.cn Tel: +86 531 6787 9283

**LGMG Europe B.V.**

Address: Donker Duyvisweg 301, 3316 BL Dordrecht, The Netherlands  
Email: sales@lmg-europe.com Tel: +31 850 642 777

[www.lmglifts.com](http://www.lmglifts.com)



**RELIABILITY IN ACTION**

## NEWS HIGHLIGHTS

- The **Cramo** division of **Boels Rental** has purchased 181 Genie scissor lifts
- **Grupo Vivargo** has taken the first 150t **Liebherr LTM 1150-5.3** in Chile
- **CTE** has appointed **Equipment Service** as its truck mounted dealer for Northern Germany and **ATG Lift** as its distributor for Southern Germany for truck mounts and the whole of Germany for spider lifts.
- UK's **Ken Harrop Crane Hire** has added a second 35t **Liebherr** to its fleet
- French manufacturer **Klubb** has appointed **Eric Baudart** as marketing manager
- **Affordable Access Hire** has taken the first **CMC S30** spider lift in the UK
- **Dayim Equipment Rental** was named 2023 Access Rental Company of Year at this year's **ME Construction Machinery Awards**
- **Hamburger Hafen und Logistik** has purchased three **Liebherr** dual trolley STS container cranes for its Altenwerder terminal
- **Kiloutou Germany** has opened its 14<sup>th</sup> location in Karlsruhe
- **Terex** has appointed **Eric Kluver** as general manager of **Terex Utilities**
- The first 32t **Potain MCT 565 'A'** flat top tower crane has been delivered in Singapore
- UK's **Hire Safe Solutions** has begun taking 23 large boom lifts from **Genie**
- Germany's **Luibl Rental & Sales** has purchased 50 **Magni** scissor lifts
- Sweden's **Liftab** has ordered 200 new **Sinoboom VM4E/VM12E** mast type lifts
- Dutch company **Roll Group** and Nigeria's **Cranes R Us** have formed a partnership
- Italy's **CEM** has promoted **Alan Orlando** to production manager and appointed **Yvonne Corticelli** as customer service officer
- **PSA Penn Terminals** of Philadelphia has purchased a third **Liebherr** STS container crane
- Rental software company **MCS** has celebrated its 40th anniversary
- Scotland's **Stoddart Crane Hire** has taken a 230t **Liebherr LTM1230-5.1**
- Scotland's **Emco Services** has taken the first 31m **Ruthmann Bluelift ST 31** Hybrid spider lift
- Lithuania's **Strele Logistics** has taken a 700t **Liebherr LTM1650-8.1**
- Italy's **Vecchiato Autotrasporti** has taken a 70m **Ruthmann T700 HF** truck mounted lift
- **Palfinger** has appointed **Alexander Susanek** as COO
- UK's **Ainscough Crane Hire** has opened a depot in St. Neots, Cambridgeshire
- **UK Forks/Vp** has taken a unique **JCB 525-60E** telehandler with proceeds going to the **NSPCC**
- French rental company **Foselev** has taken the first **Sany All Terrain** crane in France along with a new 450t **Tadano AC 7.450 1**
- Namibian rental company **Concord Cranes** has taken two 35t **Terex TRT 35** Rough Terrains
- UK's **Horizon Platforms** has donated an aerial lift to **Wakefield Hospice**
- German rental company **Gerken** has taken 140 new **JCB** telehandlers
- **Tadano America** has appointed **Central Atlantic Crane** as a distributor for AT, RT and telescopic crawler cranes in Virginia
- **Hiab** has appointed **John Carnall** as MD of its UK & Ireland distribution business
- UK's **Thanet Crane Hire** has opened a new depot
- UK's **Lee Lifting** has taken a 230t **Liebherr LTM 1230-5.1**
- **Easy Lift** has appointed **Ahern Ibérica** as its distributor for Spain & Portugal
- UK civil engineer **J. Murphy & Sons** has taken a second 137t **Liebherr LR 1130.1** crawler crane
- **Manitex Valla** has appointed **Mtandt** as distributor for India and SAARC countries
- The Saudi Arabian division of Japanese contractor **Sankyu**, has taken two **Liebherr** cranes, a 50t LTM 1050-3.1 and 180t LTM 1160-5.2
- **Magni** has appointed **Skyworker Trade** as its aerial lift distributor for Switzerland & Liechtenstein
- UK's **Star Platforms** has moved into a new HQ in Houghton Regis, Bedfordshire
- **MaxiKraft** has taken its third 1,000t **Liebherr LR 11000** crawler crane
- **Genie Europe** has appointed **Karen Bessant** as territory sales manager - UK South - and promoted **Dominique Lujckx** to director, parts & support for Europe, Africa, the Middle East and India.
- **JLG** is expanding telehandler capacity at its plant in Jefferson City, Tennessee
- UK **JCB** distributor **Gunn JCB** has set up new company '**Midlands JCB**' for the English midlands
- **LGMG Europe** has appointed **Access Supply Nederland** as distributor for the Netherlands
- Germany's **Richard Kölch & Son** has taken its 50th crane on its 50th anniversary - a 30t **Tadano AC 3.055-1**
- Dutch rental company **Peinemann** has taken two 66ft **Holland Lift** all-electric RT scissor lifts
- **Boels** has acquired UK lighting tower specialist **Illumin8 Lights**
- UK's **MEP Hire** has taken 150, 14ft **Genie GS-1432m** micro scissors lifts
- Spanish rental company **Lozano** has taken a 90m **Bronto Skylift** truck mounted lift
- Italian spider lift manufacturer **Platform Basket** has appointed **Enrico Marighella** as export manager
- Germany's **Franz Bracht** has taken a 200t **Tadano GTC-2000** telescopic crawler crane
- Qatari contractor **Galfar Al Misnad** has taken two 100t **Grove GMK4100L-2** cranes
- UK's **Falcon Cranes** is adopting the **Northvolt Voltpack** energy storage system
- **Jekko** has appointed **Kogler Krantechnik** as dealer for Austria
- UK's **Emerson Crane Hire** has taken a 450t **Liebherr LTM 1450-8.1**
- Germany's **Schmidbauer** has taken six 45t **Tadano AC 3.045-1** City ATs
- Bahrain's **Al Jazeera Shipping** has received the first 400t **Liebherr LR 1400 SX** crawler crane in the Middle East
- **Skylift**, the **Easy Lift** dealer for Sardinia and Lazio, has delivered five big spider lifts
- UK's **Star Platforms/Star Power** has appointed **Michael Hooton** as finance director
- **CTE** has appointed **Key-Tec** as its truck mounted lift distributor for Belgium
- **Scotland's Horizon Reinforcing and Crane Hire** celebrated 50 years with a new 110t **Liebherr**
- Spanish manufacturer **Jaso Industrial Cranes** is supplying seven cranes to **Sheffield Forgemaster** in the UK
- Canadian rental company **Guay** has ordered three 700t **Liebherr LR 1700-1.0** crawler cranes
- China's **XCMG** has appointed new company **Genesis Equipment Sales** as its UK aerial lift distributor
- Germany's **Wiemann Autokrane** has taken a 400t **Grove GMK6400-1**
- Dutch crane rental company **Herms** has taken the first 70t **Tadano HK 4.070-1** in the Netherlands
- **Werner** has launched the Pro Plus mobile access tower system
- **Mammoet** says is starting to build its long discussed 6,000 tonne SK6000 ring crane
- 3D Lift Plan developer **A1A Software** has released 'Rigging Designer' a new app for creating rigging plans on the go
- **Oshkosh** - parent of **JLG** - is to acquire **AeroTech**, a supplier of aviation ground support products
- US group **REIC** (Rental Equipment Investment Corp) has acquired **Midstream Equipment Corporation** of Calgary, Canada



Alexander Susanek



Eric Baudart



Eric Kluver



John Carnall



Alan Orlando



Yvonne Corticelli



Dominique Lujckx



Karen Bessant



Enrico Marighella



Michael Hooton