



LiftEx 2015

EXHIBITION | CONFERENCE | INNOVATION



New to LiftEx!
Industry Conference
programme confirmed
**BOOK YOUR SEAT
NOW!**

REGISTRATION IS NOW LIVE

cranes & access readers get **15%** off conference entry
– quote **CAA15** when booking!

11–12 NOVEMBER 2015
EXHIBITION CENTRE LIVERPOOL

visit www.liftex.org/register to book your place !

Now in its 11th year, LiftEx has grown to become the UK's leading exhibition for the lifting industry, returning to its successful stand-alone format over 2 full days.

Speakers include:



Ian Simpson

HM Principal Specialist
Inspector of Health & Safety,
Mechanical Engineering,
Health & Safety Executive
(HSE)



Ingo Rühl

Group Leader of the Handling
Engineering group within the
Engineering Department at the
Accelerator and Technology
Sector, CERN



Oliver Auston

Technical Committee Chairman,
Working at Height Safety
Association (WAHSA) and Vice
Chairman and E&Q Committee
Chairman, LEEA

LESS THAN 20% OF STAND SPACE REMAINING – DON'T MISS OUT!

to secure a stand or one of our few remaining sponsorship opportunities
Contact Leah Phelps on +44 (0)7795 110646 or email leah@liftex.org

PLATINUM
SPONSOR



GOLD
SPONSOR



VISITOR GUIDE
SPONSOR



ATTENDEE BAG
SPONSOR



Kobelco 7250S

The Kobelco 7250S is a 250 tonne hydraulic crawler crane which sits at the top of the company's range of medium-sized crawler cranes. In tower configuration it has a maximum system height of almost 116 metres. This is a 1:50 scale model is made by Tonkin Replicas.

The model is very well presented, as in addition to the detailed assembly manual there are two brochures about the real crane. One is a general marketing brochure about the Kobelco full line, and the other has load charts for the 7250S.

Assembly is reasonably straightforward and in full tower configuration this is a big model being around 1.8 metres tall. It is stable with the boom at a steep angle but it cannot support it horizontally and there is not enough rope on the drums to pose it that way in any case.

The detail level is very good. The realistic metal tracks are detachable and can be used as transport loads. The cab has mirrors and a protection guard and there are tiny graphics which add to an authentic look.

The gantry mast is modelled well as it folds flat locked in place with transport clamps, and it can be bolted into the erected position. The boom and jib sections are metal and they have mesh walkways, with tiny graphics on some parts. They are straight and the sections are secured together with black nuts and bolts. There is internal bracing, and the sheaves are all metal.

The rope guys have plastic connectors which are bolted together, so they look good and the equaliser resolves any mismatches in length on the main boom.

The model can be configured in many ways but it looks best in tower mode. The luffing jib assembly works well, and it can be fully lowered into a position where it can be clipped to the boom.

Three hooks are supplied; a headache ball, a 35 tonne block, and a 70 tonne block, and a beam load is provided to help tension the ropes when the model is rigged with the two hook blocks.

This model maintains the high standard of detail that Tonkin has previously put into its Kobelco crawler crane models. It makes a great display model, but a few aspects of the functionality are limited. However it is flexible in configuration and overall it is a very good model.

It is anticipated to cost around €400 from dealers when it becomes available in September.

To read the full review of this model visit www.cranesetc.co.uk

Cranes Ect Model Rating

| | |
|--------------------|-----|
| Packaging (max 10) | 9 |
| Detail (max 30) | 28 |
| Features (max 20) | 16 |
| Quality (max 25) | 20 |
| Price (max 15) | 11 |
| Overall (max 100) | 84% |



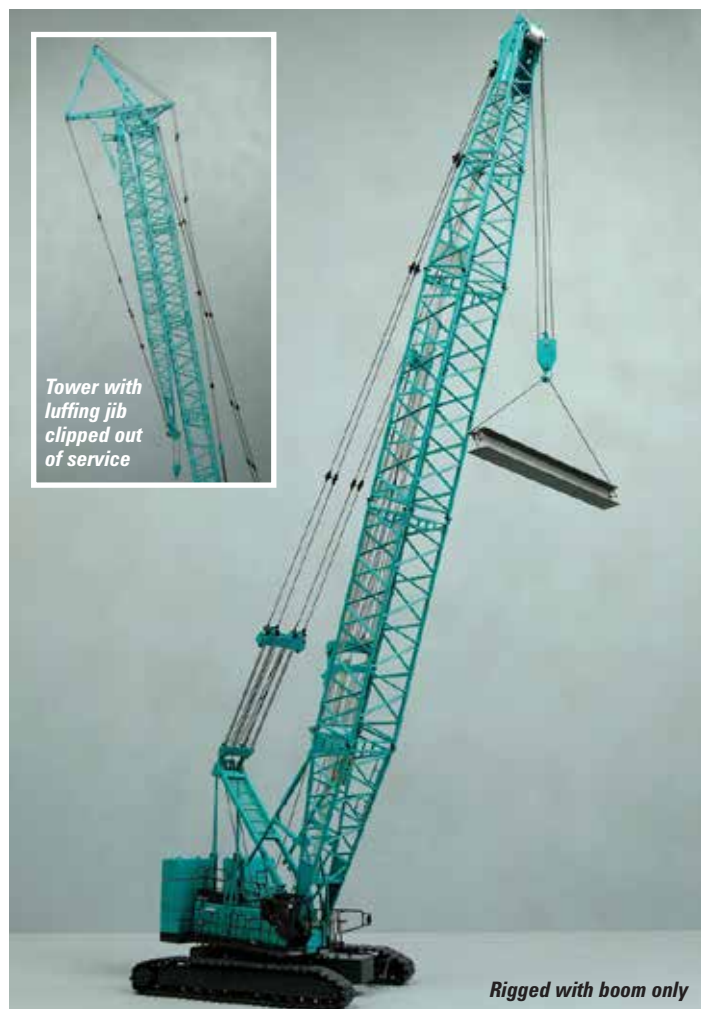
Maximum configuration



The parts make good loads



Detailed cab and superstructure body



Tower with luffing jib clipped out of service

Rigged with boom only