

CMC/SUP Elefant enter UK

Italian truck and spider lift manufacturers CMC and SUP Elefant have appointed Baker Access as their distributor in the UK. Both companies are based near Bari in south east Italy, have ownership links and also work together with Barin, the underbridge inspection platform specialist.

Baker Access is a new company owned by Nigel Baker, which has taken over the assets of spider lift sales and rental company Max Access that went into administration earlier this year. Baker Access is currently based in temporary premises in Oxford. Baker had put Max Access into a voluntary arrangement, was paying down debts and restructuring the business when three of its customers 'went under' leaving the company with bad debts that it could not sustain.

Key products for the UK are likely to include the S15/S19 - 15 and 19 metre SUP spider lifts and 20 metre CMC TB200 articulated truck mount on a Cabstar 3.5 tonne chassis. The S15 includes a dual riser, telescopic boom and articulating jib and 200kg unrestricted platform capacity, while the S19 offers almost 12 metres of outreach. Baker Access is looking to launch in the UK with a last minute stand at SED and at Vertikal Days on June 24th/25th.



The SUP Elefant S15 will be one of the more popular models

The CMC TB200 20 metre platform



Haulotte to distribute Holland Lift

Holland Lift has confirmed that Haulotte will distribute its heavy duty scissor lifts in France, Italy and the former Yugoslav states. Stefano Di Santo Haulotte's area general manager for Southern Europe said: "The agreement we have reached is an extension of an existing relationship and allows us to complete our scissor lift range, especially in the big scissor sector."

Menno Koel, sales director of Holland Lift, added: "The choice of Haulotte as our dealer is part of our plan to extend our market coverage and stay as close as we can to our customers, profiting from the history and position of Haulotte in those specific markets."

Haulotte will exhibit at least one Holland Lift on its stand at Intermat. This deal follows the licensing agreement for certain Holland Lift products announced at Intermat 2006. Holland lift bought those rights back and this latest move is probably better suited to both companies.



Haulotte is to distribute the Holland Lift heavy duty scissor lifts in France, Italy and the former Yugoslav states.

Kobelco SL4500 spotted

These are the first pictures of Kobelco's all-new 400 tonne crawler crane that will debut at Intermat next week. The unit has been purchased by Scottish-based Weldex and has been assembled in Paris ready for the show.



Weldex of Scotland has purchased the first unit.

The new model is part of Kobelco's ongoing programme to redesign, upgrade and improve all of its crane models from 300 tonnes up to 800 tonnes.

The SL4500 has a maximum load moment of 4,700 tonne/metres and a maximum boom and jib configuration of 84 metres main boom with 54 metres luffing jib, or 78 metres main boom with 66 metres luffing jib, resulting in a total 144 metres total boom/jib length.

The first Kobelco SL4500 rigged ready for Intermat



10 years of Cranes & Access

In May we will be celebrating 10 years of Cranes & Access, May/June 1999 was the first issue of the magazine, which added access equipment to the popular crane magazine - Cranes UK. Telescopic handlers were added a few years later. The first issue featured Martin Ainscough and David Barras on the front cover debating how well cranes and access equipment mix in a rental fleet.

If you have any comments or ideas on what to include in the next issue, please do let us know.



The last cover of Cranes UK and first Cranes & Access.

Truck mount Hinowa

Italian spider lift and tracked undercarriage manufacturer Hinowa will unveil a new truck mounted lift at Intermat. The new model which has been a closely kept secret will be the Orchid lift 21:11 with 21 metres working height and up to 11 metres of outreach.



An artists impression of Hinowa's first truck mount.

Big new Wolff

German tower crane manufacturer Wolffkran, recently unveiled its Wolff 1250B luffing jib tower crane with up to 60 tonne lift capacity and 80 metre jib.

Wolffkran says that it is reacting to the growing demand for extra large 'XXL' luffing cranes for the erection of power stations and structural engineering projects. The first of the new heavy-weights will go to work on a site in Germany later this year.

The new 1,500 tonne/metre crane can handle its 60 tonne maximum capacity at a radius of 25 metres making it a true heavyweight. The counter-jib has a relatively compact length of just 9.8 metres, permitting its use in many locations with restricted space. Wolff has also developed and design protected 're-reeving assistance' which reduces re-reeving time when changing from two to three rope operation for heavier loads. Although the new crane is equipped with an enhanced 132 kW hoisting gear, and can handle 20 tonnes on single line, (40 tonnes on two falls and 60 tonnes on three) an extra four-fall operation for 80 tonnes is also possible.

When used on single line work, hook speeds are 190 metres a minute the fastest for a crane of this size. It is also stepless - no gear changing.

With a standard rope storage capacity of almost 1,000 metres, the crane can be deployed for building heights of up to 800 metres in single fall operation, 400 metres in two fall and even 260 metres in three fall operation for loads up to 60 tonnes. Despite its size, it can be erected completely within two days helped by the fact that main components weigh no more than 15 tonnes. Wolffkran

aims to build between 10-15 cranes per year to keep pace with demand.



Wolffkran's largest luffing tower crane the Wolff 1250B



The Tadano Faun ATF130G-5



The Tadano Faun HK70

Two new Tadano mobiles

Tadano Faun has released details of its latest cranes, the 130 tonne ATF130G-5 All Terrain and 70 tonne HK70 five axle truck crane on a commercial carrier. The ATF130G-5 slots into its expanding All Terrain range between the popular 110 tonne ATF 110G-5 and 160 tonne 160G-5.

Available with either a 10x6x10 or 10x8x10 drive/steer configuration, the all-wheel steering system avoids the need to raise the central axle during crab steer. The crane is equipped with a six section, 60 metre main boom with single cylinder telescope system, providing a full extension time of less than seven minutes. A 10 to 18 metre swingaway extension - which can be extended to 32 metres - is available with mechanical or hydraulic offset.

The 130G is also available with a 3.8 metre, 40 tonne, heavy-duty stubby extension with 20 or 40 degrees of offset, which is ideal for handling bulky loads. In its Taxi version which meets 12 tonne axle loads, the 10x8 ATF130G-5 can carry six tonnes of counterweight (full counterweight is 42 tonnes), the 10/18 metre extension, 63 tonne hook block and 10 tonne swivel hook. In the UK the crane should be able to travel with up to two thirds of its full counterweight under STGO rules.

The HK 70, the only five axle 70 tonne truck crane made in Germany, has been developed following a request from and in strong cooperation with Dutch crane company, Mammoet. It features the same 44 metre main boom and 61 metre tip height - as the ATF 65G-4 All Terrain with which it shares a superstructure.

The crane weighs a total of 52 tonnes, complete with its maximum counterweight of 15 tonnes the nine to 16 metre extension, a 32 tonne hook block plus 10 tonne swivel hook, leaving up to two tonnes for additional lifting tackle etc.

Terex Fantuzzi deal back on

Terex has announced that it is resuscitating its plan to acquire the Fantuzzi port equipment business. The company says that it has reached a non-binding agreement to acquire the business for €175 million - €40 million less than the original deal it struck last August, which was terminated in January. Term sheets have been agreed with Fantuzzi's bank creditors for long-term financing which will provide almost all the funds needed to complete the deal. As all approvals have already been obtained the two parties are looking to complete by the end of April.

Raimondi rebounds

Italian tower crane manufacturer, Carlo Raimondi, which recently went into administration, has reorganised under a modified name - Raimondi Cranes S.p.A - and restarted production at its Legnano plant, following a capital injection from the 30 company strong Ramco Group of Qatar.

"Following the recent demise of

Carlo Raimondi fu R. S.p.A., after the unfruitful takeover and management by SIME in 2006, we are pleased to advise that the production of Raimondi tower cranes has restarted at the factory in Legnano," said a company spokesman. "The manufacture of the Raimondi brand is being reorganised under new management with the backing of the Ramco Group."

The Ramco Group will initially manufacture 100 cranes for its own civil engineering operations in the Middle East.



Liebherr employees including Willi Liebherr (third from the left) and customers at the unveiling of the new LTR 11200.

Liebherr tracks out new LTR 11200

Liebherr has unveiled the prototype of its new 1,200 tonne LTR 11200 telescopic crawler crane, emerging from the newly constructed large-crane assembly shop at its Ehingen plant.



The first Liebherr LTR 11200 telescopic crawler crane

Liebherr developed the 4.8 metre wide, narrow-tracked crawler crane following a request from wind power plant manufacturer Enercon. The 100 metre telescopic boom and superstructure have been taken from the LTM 11200-9.1 All Terrain crane launched at Bauma 2007.

During lifting operations the LTR 11200 is supported on a 13 metre by 13 metre star-shape outrigger base. The boom system has Y-suspension as well as the fixed and luffing lattice fly jibs similar to those on the LTM 11200.

Liebherr president Willi Liebherr emphasized the importance of wind power as the main operational area for the new LTR 11200 in his speech at the unveiling.

Atlas moves to Terex cranes

Terex has moved its Atlas loader crane business into its Terex Cranes division which also includes Terex Demag, Bendini, PPM, Comedil and Terex Cranes Waverly. Terex Atlas, acquired by Terex in late 2001, is based in Delmenhorst, North Germany and until now has been part of the group's construction division.

Jim Robbins, general manager of operations said: "With the transition to our cranes segment, we are well positioned for our experts to work together to respond to customer and market needs. Terex Cranes is truly a one stop shop for a wide range of lifting equipment and this is a benefit to all customers."



A Terex Atlas loader crane

CPA/HSE to launch new Best Practice guidance at Vertikal Days...

The UK's Construction Plant-hire Association (CPA) and Health & Safety Executive will launch two major new Best Practice Guides at Vertikal Days 2009, one for cranes and one for hoists. As part of the launch the CPA will run two important seminars on the first day of the show at Haydock Park - Wednesday 24th June.

The morning seminar will launch a major revision to the CPA's Best Practice Guide for Crane Hire and Contract Lifting. The document has been revised in conjunction with the HSE and sets out the steps to be taken by crane owners to ensure that those hiring mobile cranes are fully aware of their duties and responsibilities.

The open seminar will include presentations from both the HSE and the CPA's Crane Interest Group, and will include details of a series of training sessions for hire desk staff on the application of the Best Practice guidance. These will be held at various locations around the UK in the second half of this year.

In the afternoon Gordon Gedling, chairman of the CPA's Construction Hoist Interest Group (CHIG), will launch a Best Practice Guide on Work at Height on Construction Hoists. This has been produced in conjunction with the HSE and provides practical guidance on meeting the requirements of the Work at Height Regulations when installing, using, maintaining examining and dismantling construction hoists.

...And IPAF to host rental meetings

IPAF has also confirmed that it will be holding its Hirers committee open meeting at Vertikal Days on Wednesday 24th June with a special 'Hire +' meeting in the afternoon.



The new Nifty SD120T

We now have photographs of Niftylift's new 12 metre working height SD 120T lightweight self propelled boom lift, unveiled at the ARA last month.

Developed with the arboriculture sector in mind it combines the superstructure and working envelope of the popular HR12 with a new low-weight SD chassis which features four wheel drive, 45 percent gradeability, high flotation tyres and outriggers.

The SD120 has an outreach of 6.1 metres and weighs just 1,850kg, which should make it popular for applications that require a soft footprint and the ability to level up on uneven or rough ground. The lift is also available with almost any power combination, including battery, Diesel, Bi-Energy, Tri-energy or propane/petrol.



The Nifty SD120T in action



The SD120T's light weight and 4x4 drive make it ideal on soft ground.



Four of the key speakers (L-R) Pat Cox, John Ball, Michael Kneeland and Kevin O'Shea

A record turnout for the IPAF summit held in Dublin was followed in the evening by the presentation of the International Access Awards.

Delegates listened to a variety of high powered speakers including Peter Power, Ireland's minister for overseas development, who opened the summit saying he was proud that an Irishman had been appointed as president of the international federation and apologised that the prime minister had not been able to attend due to the emergency budget preparations. The day also included presentations from IPAF president John Ball, Kevin O'Shea, the chief executive of United Rentals, the world's largest rental company Michael Kneeland and Pat Cox, ex president of the European Parliament.

The winners at IPAF international access awards included:

Best marketing campaign for IPAF training - **Camillo Vismara of Switzerland**

IPAF instructor of the year - **Mauro Potrich of CTE, Italy**

Access industry training award - **A-Plant, UK**

New product of the year - **JLG Liftpod**

Contribution to safe working at height (Manufacturer) - **Skyjack**

Contribution to safe working at height (Rental company) - **Lavendon Access Services, UK**

Mastclimber achievement award - **Mastclimbers, USA**

IPAF safety champion of the year - **Andy Studert, NES Rentals, USA**

Access rental company of the year - **Riwal, Holland**

Lifetime achievement awards - **Dennis Ashworth, previously of Simon and John Fuller, until recently with Genie**

Full coverage of the IPAF summit along with our popular photo album will be published in the May issue.



Award winners at this year's IPAF summit

Tanfield up 18% takes major write downs

Tanfield - the owner of UpRight and Snorkel - has reported full year revenues up 18 percent to £146 million largely due to the full year contribution of Snorkel. Pre tax profits before the write offs fell 87 percent to £1.7 million. The write downs, which include writing off almost all of the Snorkel goodwill, and taking inventory and debtor write downs, resulted in a final pre-tax loss of £88.8 million.

Tanfield chairman Roy Stanley said: "The balance sheet after the impairments remains strong with net assets of £85.8 million and excess of current assets over current liabilities of £61.5 million. Cash at 31 December 2008 was £11.1 million and this position is being maintained."

"This has been a challenging year for the Group. However, we are a business that is lean, nimble and focused, with a highly experienced management team, which reacted promptly and decisively to the adverse market conditions. Tanfield is well placed to trade through the downturn and to move rapidly when its end markets improve."

UK tower crane company found guilty

After years of waiting UK-based tower crane rental company W D Bennetts has been found guilty of health & safety breaches following the death of two men in a tower crane accident at Durrington High School in Worthing, West Sussex dating back to February 2005.

Bennetts was charged alongside Eurolift (Tower Cranes Ltd) an affiliate, which pleaded guilty to two health and safety breaches at the beginning of the trial. Both companies were found guilty of breaching the Health and Safety at Work Act 1974 for failing to ensure, the health, safety and welfare of its employees and other workers on the site. Both companies will be sentenced on a date yet to be set.

Specialist IT solutions for the rental industry



+ U = GROWTH

Whatever the size of your hire business, inspHire provide rental management solutions that will deliver unbeatable functionality. Seamless streamlining of both front and back office processes give businesses the edge they need to grow and succeed.

To manage and increase your rate of business success, contact us today and become inspHired.

0800 634 0600
sales@inspHire.com
www.inspHire.com





Available from April '09

ACCESS MORE AREAS

Increase Utilisation for **Pop-Up** & **Pop-Up+**

POP ON THOSE HANDRAILS NEW

- Easy to fit confined space handrail
- Enables access into ceiling voids
- Max. safety for working at height
- Helps prevent overreaching
- Self-closing spring loaded gate



NEW BUFFER WHEELS RUBBER PROTECTION

- Easy to fit rubber buffer wheels
- Helps prevent accidental damage to walls and doors
- Manoeuvres into tight spaces
- Provides access to more areas including final fix stages



POP UP PRODUCTS LIMITED

Pop-Up Products Limited, 2 Deeside Point, Tenth Avenue, Deeside Industrial Park, Deeside CH5 2UA

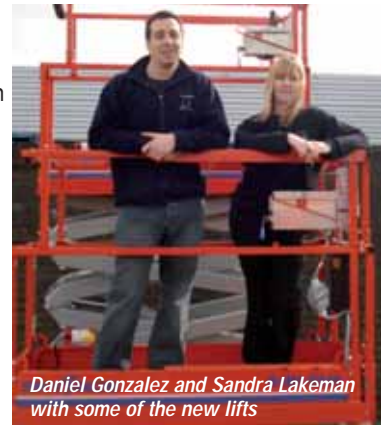
t: +44 (0)1244 833 933

f: +44 (0)1244 833 934 e: sales@popupproducts.co.uk www.popupproducts.co.uk

Elevation on the up

Milton Keynes-based aerial lift rental company Elavation has taken delivery of 20 new Skyjack electric scissor lifts, the first batch of units that it plans to add to its fleet this year. The platforms are mostly small battery electric models, which along with specialist boom lifts form the bulk of the company's fleet.

Elavation is the Access Link member for the Home Counties and says that business circulated through the Link has been a major benefit in the slower market.



Dispatchers Sandra Lakeman and Daniel Gonzalez said: "This particular batch of machines was ordered for a specific long term contract. The client demanded light, compact machines for lift access and wanted the added security of quick release control boxes. The Skyjacks fitted the criteria perfectly."

Elavation was founded by Mani Gonzalez and Barry Brady almost five years ago and has built up a rental and training business with a fleet of more than 250 units operating from a single location.

New records for Vertikal.Net

March was another record month for Vertikal.Net readership exceeding 100,000 visitors for the first time and almost 5 million hits.

The actual numbers were:- 4,845,894 hits, 1,938,224 pages viewed and 102,172 visitor from 46,902 unique IP addresses. Total bandwidth consumed was 157.84 GB.



Rogue trader shut down

Irons Design & Build, the Northampton-based contracting company that disappeared in February with at least one rented aerial lift - an UpRight AB62 articulated boom lift belonging to Nationwide Platforms - serial number 1346, has been 'wound up'. The company - owned by Jamie Irons of 100 Leybourne Drive, Bestwood, Nottingham, NG5 5GP - had a trail of debts and fraudulent activity to its name and was finally placed into liquidation earlier this month. As far as the know the lift is still missing.

Gang steals two truck mounts

A well organised gang broke into the premises of Loxam UK's Pontefract/Leeds branch on the night pf April 6th after cutting the phone lines.

The stolen units were a 2007, 34 metre Bronto S34MDT, GB registration FJ57 NHV - serial number 5543-469 mounted on an Iveco chassis and a 22 metre GSR/Skyking 198PX mounted on a Nissan Cabstar chassis - GB registration number FM07 FBE, serial number AP1038.

If you are offered them or spot them call your local police station or contact Loxam direct.



CTE UK relocates



The CTE UK team outside of the new premises

Aerial lift equipment supplier CTE UK has completed the relocation of its operations to larger premises at Enderby near Leicester.

The new headquarters provide more space for storage, display and preparation of the company's range of vehicle mounted and tracked access platforms. Larger workshop and office areas will also allow the company to expand its customer support facilities. The new location is close to the M1, M6 and A14. "Our business is continuing to grow and these new headquarters facilities will enable us to provide a better service to all of our customers," said CTE UK sales manager Jonathan Wiseman

Gehl may file Chapter 11

Telehandler and access manufacturer Manitou has issued an updated financial bulletin which also says that Gehl has breached its loan covenants, resulting in its banking syndicate demanding repayment of its loans at the end of March.

As a result Manitou says that Gehl may file for protection under Chapter 11 of the bankruptcy code, if a suitable renegotiation of its loan covenant was not completed.

However Manitou is pursuing discussions with its banking partners in both the United States and Europe with the aim of securing the Gehl financing while continuing to contain the risk in the United States.

Manitou group revenues rose 1.4 percent to €1.28 billion, €20 million of which came from Gehl. After a strong start to the year with sales at the nine month stage still up 6.6 percent, however the fourth quarter saw a steep downturn which brought revenues down close to last year's level.

Profit before exceptionals was down 15.7 percent to €128 million, (down 12 percent to €133 million without Gehl). Net after tax profits before taking a €52 million goodwill write off at Gehl were down 35 percent to €56 million (down 28 percent without Gehl).

Sherlock and Huddart team up

Brian Sherlock and Alan Huddart, previously colleagues at UK rental company Hewden, have launched a new business - Spa Asset Management.

The new business will offer a wide range of services, from organising equipment disposal auctions to rental consultancy. The business already has its first auctions lined up.

Before his departure, Sherlock was managing director of Hewden Stuart having also served as director of operations and managing director of

Hewden Hire Centres. Huddart had been head of technical services and operations director for Hewden Instant Access.



Brian Sherlock (L) and Alan Huddart

Vehicle
mounted access
Market Leader
New Build
Service
Training
New LVI option



1 Altendiez Way, Latimer Park,
Burton Latimer, Northants. NN15 5YT
t:01536 721010 f:01536 721111
e:sales@versalift.co.uk



www.versalift.co.uk

Half a Penny crane

Goodwill write down

Oshkosh is anticipating taking a \$1.2 to \$1.5 billion non-cash goodwill write-down/impairment in its second quarter for several of its business units, although JLG will represent by far the largest portion of the write down. It also expects the impairment charges to be largely non-deductible for tax purposes.

The company is working with a third-party valuation firm to assess the fair values of the company's reporting units and plans to complete the impairment analysis prior to the release of its second fiscal quarter results. Oshkosh paid \$3.2 billion for JLG in late 2006.

Wacker Neuson up 17%

Light equipment and telehandler manufacturer Wacker Neuson has reported 2008 revenues up 17.3 percent to €870 million, but pre-tax profits slipped 28.8 percent to €62.1 million. The company says that it is optimistic about the future and that it is in good shape financially to pull through the current downturn, ready to exploit what it believes will be a strong upturn in late 2009 or early 2010.

Dr Georg Sick, Wacker's chief executive, said: "Although business in 2008 initially developed in line with predictions, the second half of the year was characterised by a significant downturn. We subsequently revised our forecast back in July 2008, and, thanks to our strict cost management strategy, were able to exceed this target."

UK-based loader crane maker, Penny Hydraulics and Italian tracked undercarriage manufacturer Hinowa have teamed up to produce a small tracked crane.

The new HS400/V12 Mini crane combines Hinowa's HS400 dumper chassis with Penny Hydraulics' V12 crane.

The battery powered unit has a three section, 2.9 metre telescopic boom with maximum lift capacity of 630kg. The crane uses two front outriggers set at 45 degrees, allowing 90 degrees of slew. Lift capacity at maximum radius is 240kg and all crane functions are hydraulic. Overall stowed dimensions are 790mm wide by 1.57 metres long and 1.84 metres high.

The crane can also be quickly and easily demounted, allowing the HS400 to operate as a compact rough terrain lift truck or with other attachments. The operator will normally operate the crane from the controls on an umbilical cord, although there is a platform for the operator to stand on during travel.



The Penny HS400/V12.

First photo of new Liebherr



Liebherr has issued the first photos of its new MK88 which replaces the MK80. The new model has a maximum capacity of eight tonnes, a maximum radius of 45 metres and standard hook height of 30 metres which can be extended to 59 metres at maximum 45 degrees jib elevation. Jib tip capacity is more than 2,000kg.

Your experienced partner in...
...equipment parts.



PSE MEWP PARTS DIVISION

- A provider of exact OEM replacement parts for scissor and boom lifts.
- Highly experienced customer service staff.
- Parts are shipped the same day ordered with no extra charge.
- No hassle with returns.
- Competitive pricing.

PlatformSales
EUROPE

PlatformSales Europe • Maxwellstraat 50 • 3316 GP Dordrecht • The Netherlands

T. +31 78 65 217 65 • F. +31 78 65 217 60 • E. sales@platformsales europe.com • I. www.platformsales europe.com

GENIE
HAULOTTE
HOLLAND LIFT
JLG
MEC

NIFTYLIFT
SKYJACK
SNORKEL
UPRIGHT
AND MORE...

New Boom Truck

Omaha, Nebraska-based boom truck and aerial lift manufacturer, Elliott Equipment, has launched a new 50 ton boom truck. The 50105 has a 105ft (32 m) full powered main boom and standard 32ft (9.7m) to 49ft 14.8m) two piece jib and load moment indicator.

"This 50 ton model demonstrates Elliott's commitment to developing the best performing line of material handling solutions in the industry," said Elliott president Jim Glazer. "Now more than ever, Elliott is working to develop innovative solutions to help our customers be more productive than ever before."



Manitowoc sells ice business and issues profit warning

Manitowoc has stated that its first quarter earnings may be 50 percent below estimates and confirms that it has sold the Enodis ice business to Warburg Pincus Private Equity for \$160 million.

The company says that global demand for the company's cranes continues to decline further than previously anticipated due to the continuing global recession and no longer believes that it will be able to achieve its previous guidance for sales, earnings per share or cash flow.

Chief executive Glen Tellock said: "We have reached an agreement to fulfil our obligation to sell the Enodis ice business and can now focus entirely on operating our two strategic lines of business: cranes and commercial food service equipment. Manitowoc has been through downturns before. Although the pathway out of this downturn will be challenging, I am confident that Manitowoc will emerge as the leader in its industries, stronger than it was before."

Easi truck rental

Dublin-based international access and lifting company Easi UpLifts is setting up a new truck mounted aerial lift rental fleet in the UK. The operation will be based at its new London location. Harry McArdle the major shareholder and chairman told Vertikal.Net that it wants to build on its long experience in the truck mounted market in Ireland and is looking for a hands on person to lead this part of the business. The company currently runs a fleet of 88 vehicle mounted lifts ranging from small van mounts up to a 70 metre Bronto S70MDT.



The Power Behind Performance

The 'Heads-up' winner.
Simply outperforming our competition in head to head tests over and over again...

← Battery Electrolyte Level Indicator

We put more into our Deep Cycle Batteries

Thicker and Heavier plates, combined with heavy strap and inter-cell connections is the 'Crown' signature.

Manufactured to exact standards to deliver the longest runtime and battery life.

A full range of 6v, 8v and 12v deep cycle batteries available...

Nobody builds them like Crown...

SHIELD
POWERING THE FUTURE SINCE 1948

Head Office
Bishops Cleeve: 01279 652 067
info@shieldbatteries.co.uk

Other Locations
Leicester: 0116 274 1400
Manchester: 0161 834 8589

Consider the possibilities...

Kranlyft UK Ltd
0117 982 6661
marketing@kranlyft.co.uk
www.maedacrane.com
Unit 1, IO Centre, Cabot Park, Avonmouth, BS11 0QL

■ Glass Handling ■ Cladding ■ Restricted Access ■ Rooftop Lifts ■ Maintenance Work
■ Timber Builds ■ Artwork Installations ■ Industrial Maintenance ■ Uneven Ground
■ Railways ■ Utilities ■ Access Work ■ Man Baskets ■ Steelwork ■



NOW IN EUROPE

China's Leading Platform Manufacturer

Our **New** global range is now CE approved and available internationally • **PARTNERS WANTED**



Beijing JingCheng Heavy Industry Co.,Ltd.

Xinghu Industrial Garden, Taihu Town, Tongzhou District,
101116, Beijing, China.

Tel: 0086-10-61539210, **Fax:** 0086-10-61539210.

E-mail: sales@jchic.com <http://www.jchic.com>

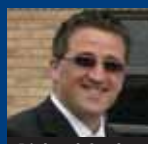
- **SGB** has scooped £2.7 million worth of new scaffold rental orders in the UK and Ireland which are due to start in the next two months.
- **Speedy Hire**, the UK's largest general rental company has agreed an amendment to its loan covenants and issued a trading update.
- **Haulotte UK** has appointed Shayne Wright as general manager
- **Ashtead** has appointed **Joe Phelan** as president and chief executive of **Sunbelt Rentals**, its US subsidiary, replacing **Cliff Miller**, who departs after 13 years with the group.
- A man has survived a 12 metre fall from an aerial lift after he was catapulted out of the platform in Ipswich, **Australia**.
- A tractor driver died after his tractor was hit by a runaway All Terrain crane near Bradford, UK - the crane was owned by **Baldwins Crane Hire**.
- US crawler crane rental company, **Essex Crane** has reported a 27% rise in 2008 rental revenues, but posted a \$4.7 million pre-tax loss for the period.
- **Wynne Systems**, owner of **Rentalman** rental software, has appointed **Kris Brusselmans** as general manager, Europe, Middle East and Africa.
- Equipment rental company **Speedy Hire** has appointed James Morley as a non-executive director.
- Boom truck manufacturer **Manitex** has received an order for 20 of its 17 ton boom trucks from **Allied Crane & Machinery**.
- **Kranlyft**, the European master distributor for **Maeda** cranes, has appointed Jackie Haley as marketing manager.
- Aerial lift company, **Snorkel Australia**, has moved its Queensland operation into new, larger premises in Meadowbrook, south of Brisbane.
- German-based mini crane and glass handling company, **Riebsamen**, has broken ground on a new facility extension at the company's Allmannsweiler plant near Biberach, Baden-Württemberg.
- Dutch aerial lift rental company **Debru** has taken delivery of a second 53 metre Wumag WT530 truck mounted aerial work platform.
- **UpRight** powered access has appointed **Alpe Slovakia** as the distributor for its full aerial lift product range in Slovakia.
- **Kranlyft** - the master distributor for **Maeda** mini crawler cranes - has appointed **Vincent Vercaemst** as international sales manager for South West Europe.
- UK-based aerial lift rental company **AFI-Uplift**, has appointed **Richard Onslow** as account manager for the south at AFI-Resale.
- **Street Crane Company** has launched a new 25 tonne hoist.
- German-based **Beyer Mietservice** has added 15 more **Maeda** spider cranes to its fleet making it one of the largest in Europe.



Shayne Wright



Jackie Haley

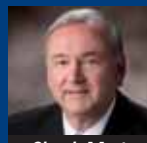


Richard Onslow

- **Ahern Rentals** of Las Vegas has reported 2008 revenues up 12% while profits slumped 69% and 2009 got off to a poor start.
- **Dubai's Roads & Transport Authority** has fined a contractor Dh 200,000 (\$54,000) fine following a crane accident in February 2008.
- **Socage** has delivered six new 35 metre truck mounted lifts to Russia mounted on Kamaz trucks.
- **Kennards Hire** of Australia has acquired **Complete Hire** of Redcliffe near Brisbane, Queensland.
- **Collé Rental & Sales** has been appointed as the Dutch distributor for Palfinger's aerial lift products from **Wumag** and **Bison**.
- **Tanfield**, owner of **UpRight** and **Snorkel**, has announced that its North American venture, Smith Electric Vehicles U.S. Corp, will locate its new assembly plant in Kansas City, Missouri.
- **Gunther Van Den Hove** has joined Belgian-based sales and rental company **Heli** as sales representative for **Maeda** products.
- **Skyjack** has appointed two more new North American telehandler dealers - **West Coast Equipment** to handle its Zoom Boom range and **MacAllister** for its VR line.
- **IPAF** is organising a Rental Plus open meeting at **Vertikal Days**, Haydock on June 24th
- **The Queensland Mines Inspectorate** has released a safety alert warning operators of the risks associated with aerial work platform attachments falling from telehandlers.
- Powered access and crane rental company, **Peter Hird & Sons** has appointed **Allan Hemmings** as managing director.
- A length of façade scaffold collapsed on a line of cars in **Exeter**. No-one was injured although considerable damage was done.
- **Lavendon**, the aerial lift rental specialist, has agreed a restructuring plan for its UK operations following a period of consultation with its employees.
- **Loxam** has reported revenues in 2008 of €848 million, 15% up on 2007, while net profits fell 32% to €37.1 million.
- The first production unit of the new **JLG Toucan 10E** mast boom has been delivered to **Stirmimann**, the JLG distributor for Switzerland.
- **Konecranes UK** has secured three power plant orders, two in the Middle East and one in Ireland.
- The restored **Titan Crane** in Clydebank, Glasgow, has received a Civic Trust Award.
- **Chuck Martz**, president of Link-Belt, has been appointed as a vice president of **Sumitomo Heavy Industries**.
- **Hertz Equipment Rental** has acquired **Rent One**, a Spanish power generation company based in Cheste, Valencia.



Allan Hemmings



Chuck Martz



Clare Engelke



David Gillrie

- **Clare Engelke** has joined the sales team at the **Vertikal Press**, publishers of **Vertikal.Net** and **Cranes&Access**.
- **IPAF** has announced that it is organising the Europlatform conference in September. This year's venue will be in Milan.
- **AmQuip Crane Rental** has appointed **Josh Dressler** as its Southeast crane rental specialist, based in Atlanta.
- **Australia's Elevating Work Platform Association** has updated its code of conduct and is urging members to take a more professional approach to rental agreements.
- **Mike Wishart** has sold his stake in **Eazzi Lift**, the recently formed push around scissor lift company.
- The fourth **Middle East Cranes** conference will take place in Dubai on February 23 and 24th 2010.
- **Potain** has appointed **Select Equipment** of Richmond Virginia and **Allstate Crane Rental** of Charleston South Carolina to sell its self erecting tower cranes.
- R2 the sales company owned by **Russell Rowley** will be appointed as UK distributor for **Custom Equipment's** Hy-Bryd line of low level scissor lifts.
- **Terex Equipment Middle East**, is relocating to a larger facility in the Dubai Investments Park.
- **JLG**, the aerial lift and telehandler manufacturer, has opened a new sales and service facility in Singapore.
- UK access industry veteran **Bob Elcome** has joined **GGR Unic** the **Unic** and **Galizia** mini crane distributor.
- **Teupen Hungaria** is introducing a range of spider lifts and a van mount under the **Traklift** brand and has appointed **Hi-Lift Access** of Mansfield as its UK distributor.
- Suspended platform company, **Spider** has promoted **Scott Ryder** to district sales representative at its Boston location.
- **Terex Aerial Work Platforms** has appointed **David Gillrie** as global general manager for its Genie/Terex telehandler product line.
- **JLG** has published a guide to telehandler attachments and accessories for its North American product lines.
- UK rental company **AFI** has purchased its first batch of 20 **Bravi Leonardo** self propelled lifts.
- **John Turner** has rejoined **Valla UK** as training manager.

See www.vertikal.net news archive for full versions of all these stories