

Tadano and Link-Belt end agreement

Tadano and Link-Belt have issued a joint statement ending their supply agreement for All Terrain cranes. The agreement provided Link-Belt with Tadano-Faun manufactured All Terrain cranes to sell under the Link-Belt brand on a non-exclusive basis in the North American, Central American and Caribbean markets and largely focussed on the 160 tonne Tadano ATF160 G-5 and 220 tonne ATF220 G-5 marketed as the Link-Belt ATC3200 and ATC3250 respectively.



The Tadano built Link-Belt ATC3250

The two parties say that the termination agreement has been drawn up to provide an orderly conclusion to the supply arrangement and places a high priority on the interests of customers that have purchased the Link-Belt branded cranes and includes long term commitments on the part of both Tadano Faun and Link-Belt in customer support areas such as parts supply and technical support. American buyers can continue to source these products through Tadano America.



Marcio Guimaraes de Campos (L) and Koichi Tadano seal the agreement

Tadano expands

Tadano America has opened an office in Panama which will serve as the group's new regional base of operations. The office will be responsible for expanding the company's business throughout South America.

At the same time the company intends to open a new joint venture business in Brazil this year - Tadano Brazil - in partnership with is agent T.D.B. do Brazil Industria e Comercio and its owner Marcio Guimaraes de Campos. The new business which will start with a capital of \$5.9 million will be 51 percent owned by T.D.B, while

Campos will hold 49 percent. In addition to T.D.B.'s current business of importing, selling, and servicing Tadano cranes, the new Brazilian operation will have a manufacturing capability, allowing it to import "semi-finished cranes" for full local assembly. This will include the import of superstructures for mounting on local trucks and chassis as well and the assembly of other Tadano cranes from semi knock-down kits. The new company has a target to achieve revenues of \$46 million by 2013.

JLG adds 150ft Ultra Boom

JLG has announced the launch in March of a new 150ft/45.72 metre boom lift, the 1500SJ which will be shown at Conexpo. The new lift is based on the company's popular 1350SJP with which it shares a common chassis.

The new boom features the same four section main boom as the 1350, but sports a two section telescopic articulating jib which gives a maximum outreach of 9.1 metres on a fully extended main boom of around 38 metres. Weight has increased from the 1350's 20.4 tonnes to 21.8 tonnes (48,000 lbs). Overall transport length is 13.1 metres (43ft).

The 1500SJ is the highest straight telescopic boom ever built and only the second self-propelled lift to feature a telescopic jib. The unit's big advantage over JLG's aging 150HAX articulated boom is ease of transport. With an overall retracted width of just 2.49 metres (3.81m extended) and an overall

height of just over three metres, it can be moved without special width or height permits. The 150HAX is 3.5 metres wide when retracted and 4.27 metres high. The 1500 is fitted with the 75hp TD2011 diesel and steel covers are standard. The platform capacity on the new boom lift will be the same as the HAX at 1,000lbs (453kg) and 500lbs (227kg), depending on whether manual or automatic mode is selected. The new lift compares very well with its sister machine the 1350SJP in that it is almost as easy to transport, and has an almost identical working footprint and yet it offers an additional 4.5 metres working height and a significantly greater outreach at height.

How does it compare?

	JLG 1500SJ	JLG 150HAX
Platform Height	45.7m	45.7m
Outreach	23m?	24.2m
Overall Width	2.49m – 3.81m	3.51m – 5.49m
Overall Length	13.1m	12.01m
Overall height	3.05m	4.27m
GVW	21,800kg	25,855kg



The JLG1500SJ features a two section telescopic jib



The new JLG1500SJ is the largest straight boom lift ever built



The JLG1500SJ will be as easy to move as its smaller brother the 1350SJP

TVH takes a run at Lavendon

Privately owned Belgian-based fork truck and access parts supplier TVH made a cash bid at the end of November to acquire Lavendon Group - Europe's largest aerial lift rental company. The bid was worth around £185 million, with TVH assuming Lavendon's debt, currently around £158 million.

TVH Services - the holding company of Group Thermote & Vanhalst - said that it made two approaches to Lavendon with a view to making a recommended cash offer. However both bids, the latest worth 111p a share - a 40 percent premium on the day - were rejected, spurring TVH on to make a formal announcement on December 3rd. The bid was not however a binding offer to acquire the business and, according to Lavendon was subject to a number of conditions, including the availability of funding. It rejected the bid both on these grounds, on the basis that it was "opportunistic" and that it undervalued the company.

TVH said: "Lavendon is an attractive business and well positioned within the access equipment rental industry. However we believe that Lavendon's ability to exploit new growth opportunities and invest in the economic recovery is somewhat limited by its capital constraints and, by combining the two businesses, TVH would be able to accelerate the investment needed into Lavendon's rental fleet, allowing it to take full advantage of the economic recovery and maintain and grow its competitive position within its markets." More details on www.vertikal.net



The new Youngman X3XSP will be unveiled in February

Youngman goes self-Propelled

The long expected self-propelled version of Youngman's Boss X3 push around scissor lift range will be unveiled at the UK's Executive Hire show in early February.

We understand that the first model will be a self-propelled version of its 3.2 metre platform height X3X model, using two driven wheels on one axle and two rotating castors on the other end, similar to many of the existing products on the market. One major difference on the SP self-propelled model will be the fact that it now has a 500mm roll-out deck extension. We understand that other dimensions will remain similar to the push-around model at 760mm wide and 1.3 metres long. The unit will be controlled by a single joystick controller.

Bigge big lift

US crane and heavy lift company Bigge has issued a short sales video that contains more information on how its new 4,000 tonne AFRD 125D heavy lift crane is designed to work. The crane is aimed primarily at heavy lifting applications such as nuclear power station construction and uses a twin boom pivoted on a support trolley similar to that employed by the ALE, Mammoet and Sarens dual boom ring type cranes.

The big difference is that in place of a traditional counterweight the back mast/derrick boom will be anchored to a large concrete foundation cast into the ground as will the track/ring. The benefit is that a large proportion of the crane's 'footprint' remains open to site traffic, effectively reducing the dedicated space required. In order for this to work of course it needs to be possible to carry out all of the lifts on the site from the single location.

Bigge says that the 125,000 tonne/metre 125D, will take a 1,000 tonne load out to greater radii than most other cranes on the market - although no specifics have yet been published. It also says that the new crane will have lower ground bearing pressures, a higher tolerance for lifting in windy conditions and higher hoist and slew speeds. It also believed that the design concept can be expanded to around 7,000 tonnes.

See the video on www.vertikal.net

New Terex president

Terex Crane president Rick Nichols and Terex group president Tom Riordan are leaving the company at the end of this month. Riordan is moving to Neenah Enterprises, a foundry company in Neenah, Wisconsin, where he will be chief executive. Terex does not plan to replace him and chief executive Ron DeFeo will take over his duties, which he handled prior to Riordan's appointment in 2006.



Kevin Bradley

Nichols will depart in February to "pursue other opportunities" and will be replaced by Kevin Bradley, president of Terex Financial Services. Bradley joined Terex in 2005 prior to which he spent nine years each at GE Capital and AT&T Capital.

Bradley's post at Terex Financial Services will be taken up by Ramon Oliu, currently responsible for operations, risk management, and IT at the captive finance company. He will report to Phillip Widman, Terex chief financial officer.

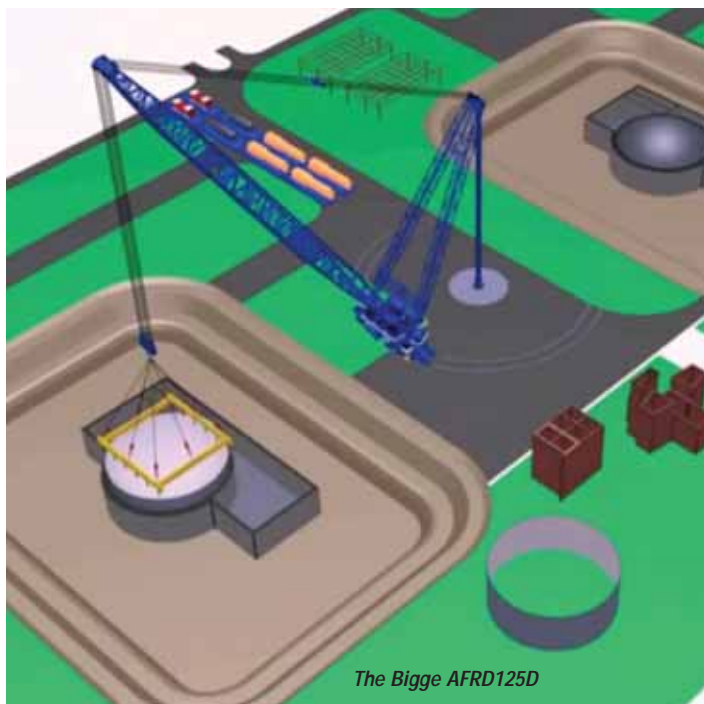
DeFeo said: "We thank Tom Riordan and Rick Nichols for their dedicated

service and accomplishments at Terex, and wish them the best in their future endeavours. Kevin Bradley is the right person to lead our efforts to improve relationships with large global crane customers and continue the globalisation of our crane business. In his TFS leadership role, Kevin has demonstrated his commercial skills and developed a keen understanding of our customer base."

Terex also announced that it will appoint a senior vice president, Terex Business System, reporting to DeFeo. The company is in the final stages of selecting from a number of internal candidates. They will be responsible for developing and implementing the Business System and "accelerating the transformation of Terex into a world-class, customer-focused operating company."



Rick Nichols



The Bigge AFRD125D

Mega crane completes Thai project

AL.SK190 lifting a column with the auxiliary block



Heavy lift and transport specialist ALE has completed a series of lifts up to 850 tonnes as part of the Thai Growth Project in Map Ta Phut, Thailand. A total of 25 items were transported, lifted and installed in just 22 days, using the 4,300 tonne capacity/190,000 tonne metre, AL.SK190 on its second major assignment.

The project originally specified a large crawler crane working from three different positions, with the lifts taking place over a three-month period. However the AL.SK190 was able to perform all the lifts from a single location completing the task in less than a month with significant cost and schedule savings for the client. The 141 metre main boom meant that columns up to 85 metres long and eight metres in diameter could be lifted over the new structure, allowing other areas to be installed ahead of schedule.

Michael Birch, executive director, ALE Projects, said: "The 28-day lift schedule was considered aggressive, but we were able to safely install all items six days ahead of schedule due to good planning and teamwork. The AL.SK190's 600 tonne quick winch system enabled the majority of the lifts to be carried out over time scales similar to large crawler cranes, whilst the strand lift system enabled us to do some heavy lifts at significant radii – such as the 850 tonne column at a 114.4 metre radius. As a result, the new process structures could be erected well ahead of what would be expected in a normal construction schedule."

Ronald Hoefmans, executive director of ALE, added: "The AL.SK190 operates with two hook blocks - the main block is used for ultra-heavy loads up to 5,000 tonnes, whilst the auxiliary block can be used as a 'quick winch' for installing loads of up to 600 tonnes over 160 metre radius. This capability makes it cost effective for projects across offshore, petrochemical, power and civil markets, where multiple items of varying weight need to be lifted and relocated from one position."



Front view of the AL.SK190 with winches on lower cross beam back mast.

Sanghvi Movers to spend \$44 million

India's largest crane rental company Sanghvi Movers says that it will spend around \$44 million on new cranes this year, a large portion of them Terex crawler cranes drawn from the €70 million order it placed last October.

The size of its fleet at the end of September was 350 units with a replacement value according to the company of Rs1200 crore (\$260 million/€200 million). Utilisation of the fleet is currently running at around 80 percent. The company said that it has added 45 cranes in the first half of its current fiscal year and will add a further 20 cranes by March.



Chandrakant P. Sanghvi

TABS

The Vertikal Press and International Powered Access Federation (IPAF) have decided to hold their annual TABS German language safety conference in Hanover during CeMat in co-operation with the show organisers. The event der Tag der Arbeitsbühnensicherheit which is targeted at end users and rental companies and covers the safe and efficient working at height.



Platformers Days, the annual German access event has announced that it will skip 2011, due to its proximity to Apex this year and work instead with CeMAT - the Hanover Fair, which will be held from May 2nd to 6th. It will return to its Hohenroda venue in September 2012.

Kobelco Cranes sales slip

Kobelco Cranes has released its half year results to the end of September, which show total revenues down 18 percent to 23.4 billion yen (£180 million), while operating income fell almost 86 percent and net income 92.6 percent compared with the first half of 2009. The company sold 240 new cranes in the period, 11 percent fewer than the 270 sold in the prior year. It said: "The U.S. and European markets have declined considerably and the worldwide market continues to be weak. Furthermore, the rise in the value of the yen has created a highly competitive environment."

On a more positive note it said that there is steady demand in markets such as India, while China is currently the largest crawler crane market. Last September the company established a joint-venture production and sales company, Chengdu Kobelco Cranes Co with local construction equipment manufacturer Sichuan Chengdu Chenggong Construction Machinery. Manufacturing is expected to start in August 2012.

Platformers Days to skip 2011



New 30 metre Roto

Merlo unveiled a 30 metre Roto, 360 degree telehandler - the 40.30 MCSS - at SAIE at the end of the October without big fanfare. We now have the specification for the new machine and thought we would look at how it compares to its main competitor, the Manitou MRT3050 Privilege launched back in 2006.

The new Merlo does seem to have trumped its competitor in most areas, something that you would expect from a product launched some four years later. While the Merlo is only a 4,000kg capacity machine, it can take this to a greater height and radius than the Manitou can handle, at least with forks. The Manitou MRT capacities when using a winch and hook are substantially better than with forks, but we do not yet have a Merlo load chart for suspended loads so have only compared fork capacities. A key area where the Merlo will score with buyers is its lower weight - at just under 20 tonnes - its significantly smaller outrigger footprint, shorter tail swing and possibly its tilting cab.

Having a second model on the market may help encourage more

buyers and further erode the small mobile crane hire market – competing with compact City type cranes. For those ‘anoraks’ among you there is a third producer of 30 metre, 360 degree telehandlers, Swiss-based Jakob Fahrzeugbau unveiled its Herkules TD40305 at Bauma 2010 but so far we have been unable to obtain full specifications and do not believe that it is in production yet. We do know that it has a 30.5 metre fork height, 4,000kg capacity and 5.4 metre outrigger spread.

Dimensionally it is closer to the Merlo and includes a star type outrigger set up.

Merlo has announced that all of its Roto telehandlers are now equipped to meet the new EN13000 crane standards as standard, complete with the external key operated override switch for the load moment indicator.



Swiss manufacturer Jakob has also introduced a 30 metre telehandler



The new Merlo Roto 4030MCSS



Manitou's MRT3050 now looks bulky and in need of a revamp alongside the Merlo

	Merlo Roto 4030MCSS	Manitou MRT3050
Lift Height	29.25m	29.7m
Capacities	kg @ height/reach	kg @ height/reach
Maximum @H/R	4,000kg @19m /10m	4,999kg @16m/5.4m
At full height	2,000kg	2,000kg
At full reach	350kg	300kg
Maximum reach	25.5m	25.5m
Outrigger spread	5.25m	7.1m
Chassis length	5.54m	6.79m
Overall length	7.56m	8.10m
Overall width	2.49m	2.5m
Overall Height	3.15m	3.26m
Tailswing	3.0m	3.5m
GVW	19,800kg	22,860kg
Ground Clearance	350mm	420mm
Slew	360 continuous	360 continuous

Onsite acquires Statewide

Statewide Equipment Hire of Western Australia has been acquired by Onsite Rental Group, creating the second largest powered access rental fleet in Australia. The deal which was finalised in mid December is an asset-based takeover, reportedly worth around A\$70 million.

Jewson orders 55 HMF cranes



One of the UK's leading building materials suppliers, Jewson, has ordered 55 new MAN 18 and 26 tonne trucks, each fitted with an HMF loader crane supplied and fitted by recently appointed authorised dealer Bevan. Bevan is fitting the vehicles with split, drop-side bodies and radio-controlled HMF 1420-K2 14-tonne/metre cranes with Kinshofer brick and block grabs.

Jewson has ordered 55 new HMF loader cranes

Specialist IT solutions for the rental industry

“inspHire has increased efficiency in our business”



Keith Johns, Managing Director - 2 Cousins Access

“inspHire understand the needs of the access market. It's Windows based so the training was easy and the invoicing now takes care of itself. inspHire is a very worthwhile investment”

Whatever the size of your business, inspHire provide hire management software solutions that will deliver proven results. Contact us today and become inspHired.

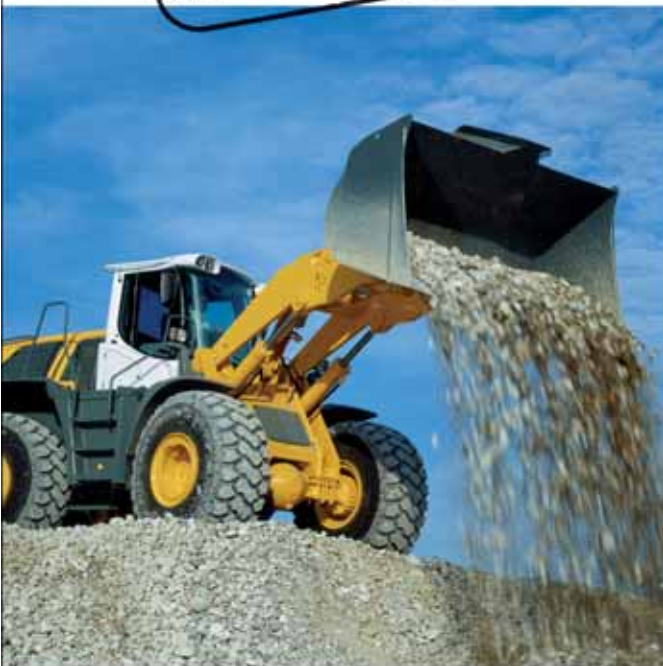
0800 634 0600
hello@inspHire.com
www.inspHire.com



**15th Swiss Trade Fair
for Construction
Machinery, Equipment
and Tools Industry**

BAUMAG
Baumaschinen-Messe

special exhibition
«concrete deconstruction»



**24 – 27 February 2011
Messe Luzern**

Thu – Su • 9 – 17h

www.baumaschinen-messe.ch

Penny's Grid Lift wins awards

The pioneering use of Penny Hydraulics' Grid Lift to lift and replace large gully manhole covers by UK-based Atkins Highway Services has won two safety awards, The Highways Agency Health & Safety at Work Award and the Highway Operative & Site Safety Initiative Award.

The Grid Lift is used by tanker drivers to remove and replace heavy covers without manual handling when they are inspecting and cleaning roadside gullies and drains. Atkins says that it has reduced accidents related to gully cleaning operations to zero.



Previously they accounted for a third of all incidents across the contract.

JLG to fit Firestone

JLG has agreed a deal with Bridgestone Americas to fit the jointly developed Firestone DuraForce MH long-life tyres to its American-built telehandlers as standard.

JLG claims that the new thicker sidewall and squarer profile tyres will reduce the risk of sidewall damage, virtually tripling tyre life and dramatically reducing ownership costs. The design also incorporates a 'unique self-cleaning tread' and offers lower ground bearing pressures, helping improve performance over rough terrain. JLG will also benefit from fewer tyre and rim combinations and reduced inventory-carrying costs.



The Firestone DuraForce MH tyre is said to increase tyre life by 300%.

HSE warns on RT scissors

The UK Health & Safety Executive has issued a warning regarding the oscillating axle interlock on JLG 400/500RTS models following three separate overturning incidents in the past four years which have resulted in a total of five fatalities.

The safety alert warns service and maintenance engineers as well as users to ensure lift/drive cut-out switches are checked for correct functioning (in accordance with the manufacturer's recommendations) before the machine is next used and that users complete daily inspections and function testing of both elements. It also recommends that all machines with oscillating axles are routinely checked and reminds users and owners that these routine checks are required by law. For full details of the alert see www.vertikal.net



bauma China 2010 achieved record numbers attracting more than 150,000 visitors, 33% more than 2008. This year's event – the fifth since its launch in 2002 – had more exhibitor space and is consolidating its position as the leading Chinese construction industry trade show. The next event takes place from 27 to 30 November 2012.

The S34 mounted on its original chassis.



Remount for last new lift

UK-based window cleaning and rental company L&N Platforms has taken delivery of what may be the last new Bronto S34MDT to be delivered.

The company purchased a similar platform from Panther Platforms around two years ago. With the used machine working out exceptionally well, the two owners Lee Roebuck and Nicky Francis were keen to buy another, but new this time. Bronto no longer builds the S34 but by an amazing stroke of luck still had the demonstrator that the two had first seen when they purchased their first unit. Mounted on an American truck it had 2,000 hours on the clock but was "as good as new". Naturally L&N wanted it on a European truck so Bronto agreed to remount it on a new Volvo chassis and also to modify the outrigger pads from manually stowed removable pads to automatic ones.

Roebuck said: "While we know this is not a totally new machine it looks and feels like a new unit. The S34 is perfect for what we do being quick, simple and totally reliable. All of our customers love it."



The lift mounted on a new Volvo truck.

Liebherr to lift 3,750 tonnes

Liebherr is planning a new heavy-lift Power or P boom for its LR 13000 crawler crane which should allow it to lift up to 3,750 tonnes. The mega crane - fitted with its standard 60 metre main boom, a 54 metre derrick boom, 400 tonnes of superstructure ballast and 1,500 tonnes of suspended ballast - lifted a test load of 3,371 tonnes at the end of November, the heaviest load ever lifted by a Liebherr crane.



New parts depot

Terex has started shipping Genie and Terex utilities parts from its new Eastern US distribution centre in Southaven, near Memphis, Tennessee. The 45,500 square metre (500,000 sq ft) facility has started with fast moving Genie parts and will continue to add lines as required. The new warehouse complements the company's Western US centre in North Bend, Washington that opened in 2009. North Bend remains the main North American parts hub for Genie, although the eastern location is intended to provide savings on freight and reduce shipping distance.

a touch of respect

Focus 2011 Sustainable Construction

Samoter
28th International Triennial Earth-moving and Building Machinery Exhibition
2nd - 6th March 2011 Verona, Italy
www.samoter.com

- earth-moving
- concrete
- road
- drilling
- quarrying
- lifting
- vehicles
- components

rental area

demo area

sponsored by OEE

organized by VERONAFIERE

Platform Baskets for Hydrex



UK-based rental company Hydrex has ordered 20 Platform Basket RR14EVO road/rail self-propelled articulated boom lifts. The 12.4 metre platform height boom lifts have been ordered through UK distributor Promax Access and will all be delivered by the end of March.

The units - built to British RIS1530 PLT Railway standards for overhead electrification work - have been approved by the British Vehicle Acceptance Body (VAB), can travel on rails at speeds of up to 8kph and can tow light rail trailers. They can also handle and work on banked turns, thanks to an automatic superstructure levelling system that copes with up to 200mm/eight degrees of side slope.



The new Ecostar 11812 is an ultra compact 40ft scissor lift.

Snorkel and Leach Lewis team up



Aerial lift manufacturer Snorkel has teamed up with UK construction equipment distributor Leach Lewis Plant, to sell, fund and support Snorkel products in the UK. The venture will trade as Snorkel UK and will hold an inventory of Snorkel products for short or immediate delivery. Customers will also have access to a wide range of asset finance plans from Leach Lewis

Mark Yarnold, Snorkel's UK key account sales manager will work closely with the powered access specialists in Leach Lewis' industrial division which will be headed by Frank Iszard.

Liebherr up 12%

Liebherr has reported first half revenues of €3.65 billion, up 11.8 percent on the same period last year. Total sales of construction equipment for the period were €2.22 billion, an increase of 6.6 percent. The increase was largely due to an upturn in Liebherr's earthmoving and mining division, which increased revenues by 28.6 percent to €1.08 billion. Cranes and mixing technology revenues fell 12.5 percent during the same period to €1.08 billion and sales of other products were up 20.9 percent to €1.44 billion. Liebherr expects group revenues for the full year to come in around six percent higher at around €7.4 billion.

And in China...

Dr. Stefan Gilch, managing director of Liebherr Machinery Service (Shanghai), said that the company expects another significant year of growth in the Chinese market for 2010, possibly up 50 percent on 2009. Speaking at Bauma China, he also announced the sale of a 1,200 tonne LTR11200 telescopic crawler crane to China Power Large Size Equipment Assembling Construction Co. which already operates a 1,200 tonne LTM11200 All Terrain.

Isoli goes with HDW

Italian-based truck mounted lift manufacturer Isoli has appointed HDW as its distributor for the Netherlands. Ridderkerk-based HDW which also distributes Genie, Teupen and Unic mini cranes, will focus its efforts on Isoli's range of 3.5 tonne Nissan Cabstar mounted lifts, including 15 to 22.5 metre telescopic models and 14.2 to 20.6 metre articulated units. HDW - part of the Pon group - will also offer Isoli's two year warranty and full maintenance programme in Holland.



The 18 metre Isoli PNT180 metre

Ashtead up 10%

Ashtead, owner of Sunbelt in the USA and A-Plant in the UK has reported Group revenues for the first half 2010 up 9.5 percent to £484.3 million, while pre-tax profits increased by more than 25 percent to £23.6 million.

The Group also substantially increased its capital expenditure in the period, from £29 million in 2009 to £96 million this year, £84 million being used for new rental units. The company says that it will spend around £225 million for the year as a whole. In the USA Sunbelt revenues were up seven percent to \$615 million, while operating income was up 24 percent to \$99 million. In the UK A-Plant saw revenues slip two percent to £82 million, while operating income increased 35 percent to £4.2 million.

Ashtead chief executive Geoff Drabble said: "In this, the second consecutive quarter in which we have delivered good profit growth, it was pleasing to see rental revenues accelerating in the US, while in the UK there were improving trends throughout the first half."

China deal for Terex



The signing ceremony in China

Terex Cranes has signed a contract with China National Chemical Engineering Co. for the delivery of 41 cranes. The deal, the largest order received by Terex Cranes in China to date, includes seven 350 tonne AC350/6 All Terrain cranes and 34 Terex Changjiang truck cranes with capacities ranging from 25 to 130 tonnes.

Hochtief fined

Contractor Hochtief Construction AG has been fined £266,000 - reduced from £400,000 after pleading guilty - following a fatal accident with a telehandler during the construction of the Glendoe hydro-electric scheme near Fort Augustus, Scotland in 2008.

Ondrej Hladick, 46, from Prague, died while using the poorly maintained telehandler. He was leaning out of the right hand window, which was missing its glass, when he lowered the boom, resulting in a crushing incident.

Health and Safety Executive inspector John Shelton said: "The telehandler involved was the most poorly maintained construction vehicle I have seen in more than 30 years' service. It should never have been allowed near any construction site. All plant machinery should be properly maintained - contractors must be able to demonstrate that this is the case on their sites."

Terex Utilities sells fleet

Terex Utilities has sold the Western US-based part of its bucket truck and digger derrick rental fleet to Indiana-based Nesco which is owned by private equity firm Hammond Kennedy Whitney & Co of Indianapolis and New York. Terms of the deal have not been released. Nesco sells and rents equipment, such as truck mounted aerial lifts, boom trucks and digger derricks to the utility sector.

Nesco chief executive Rob Troxel said: "This acquisition represents a significant western expansion of our national footprint and accomplishes one of our strategic goals as we strive to better serve our existing customers and reach out to new ones."



A Terex Utilities HyPower aerial lift

Lavendon management changes

Europe's largest access rental company Lavendon has made two changes to its senior management team. Andy Wright has been appointed to the newly created position of chief executive, international operations, based in Dubai and his successor as chief executive of Lavendon Access Services (UK) has been named as Mike Potts.

Wright was given responsibility to develop Lavendon's Middle East business, alongside his existing UK responsibilities back in April 2010, moving to the region a few months later. He will now concentrate on expanding international business using the Middle East business model.

For the past seven years Potts has been chief executive of Vendia, a private equity backed European supplier of food and beverage vending services.



Andy Wright



Mike Potts

It's here!

the all new **city** range

of electric powered platforms from Versalift

- Low emissions
- Virtually silent operation

Access to a greener world



www.versalift.co.uk
email us at: electric@versalift.co.uk



Consider the possibilities...

 www.maedacranes.com



Put your work above all.

Workspace and capacity. The more you have, the more you can do.

Rely on JLG® scissor lifts to help you run **more efficiently** and be **more productive**.

With large platforms, heavy lifting capacities, exceptional mobility, industry-leading duty cycles and quieter operations, they'll take you farther - getting whomever and whatever you need into the places you need them.

Get the **reach** you need, the **reliability** you want, and the **efficiency** the job calls for. With JLG scissor lifts and the JLG customer service and support team.

JLG. Helping you reach your potential.

- UK-based **AFI-Uplift** has purchased 22 Citroën Berlingo vans as part of its carbon footprint reduction plans.
- Florida-based rental company **General Crane & Equipment** has been bought out of Chapter 11 by **Allegiance Crane & Equipment**.
- **WindPower Innovations** has announced a strategic alliance with **Barnhart Crane & Rigging**, in the state of Oregon, USA.
- UK-based rental company **Fork Rent** was the highest bidder for the JCB's Help for Heroes Union Jack backhoe loader.
- Spider lift specialist **Teupen**, has promoted **Arjen Snijder** to the role of sales director Europe (export).
- A second generation of the **White** family has taken over at **Midwest Crane and Excavating** in Irving, Illinois, USA.
- **Ernst de Vries**, previously crane specialist with **RDW** in Holland, passed away in his sleep on December 11th.
- **Crane Care**, the UK distributor for **HBC Radiomatic** has set up a new business **HBC-Radiomatic UK**.
- **Caterpillar Logistics Services** has announced plans to open a new parts distribution centre in Dubai, UAE.
- **Stuart Chorley** of London based **City Lifting** has passed away after a tough battle with cancer.
- **AmQuip Crane Rental** has appointed **Charles Howard Snyder** as president and chief executive officer.
- **Liebherr** has delivered its 300th LTM1500-8.1 All Terrain crane to Brazilian-based crane company **Tomé**.
- **Harsco** vice chairman and former chief executive **Geoff Butler** retired at the end of December.
- A lawsuit filed by the **SEC** against former **Terex** CFO **Joseph Apuzzo** has been dismissed in a district court.
- **Caterpillar** has appointed **Kimberly S. Hauer** as vice president, human services, effective January 1st.
- **Manitex** has appointed **Ronald M. Clark** as a non-executive director and chairman of the audit committee.
- Russian sales and rental company **LTECH** has signed a co-operation agreement with **Merlo**.
- The **Gehl** division of the **Manitou** group has appointed **James C. Green** as vice president HR and legal.
- **Terex /Genie** has appointed **José M. Peña** as product development director for Europe, Africa and the Middle East region.
- **TGM Wind Services** of Abilene, Texas has purchased its third 90 metre **Bronto** truck-mounted lift with plans for two more.
- Finnish rental company **Cramo** has refinanced €375 million of its long-term debt.
- **Harry Pearson** - the spare parts manager at **ACM** in Australia - retired at the end of December.



Arjen Snijder



Ernst de Vries



Stuart Chorley



Kimberly S. Hauer



Harry Pearson

- **Cramo Finland** has acquired the tower crane and site hut operations of Finnish contractor **Lemminkäinen**.
- Dutch-based rental company **Warmerdam** has added three **Niftylift** booms and two **Hitachi** crawler booms to its fleet.
- **Lavendon** has appointed two new non-executive directors - **Jan Åstrand** and **Andrew Wood**.
- **AmeriQuip**, has appointed **Equipos y Soluciones Gracida** as its distributor in Mexico.
- **Manitowoc** has sold its **Kysor/Warren** refrigeration businesses to **Lennox International**.
- **Cargotec** has increased its shareholding in **Kalmar (Malaysia)** from 50 to 69.9 percent.
- **JLG** has 'graduated' its 6,000th instructor from its train the trainer operator training programme.
- **SEV** has appointed **Clem** as its distributor in Spain for its commercial vehicles.
- Steel producer **SSAB** has appointed **Martin Lindqvist** as its new chief executive.
- **Terex** says that it will redeem its 7 3/8% Senior Subordinated Notes in January.
- **Hertz Equipment Rental** has acquired Burbank, California-based **24/7 Studio Equipment**.
- **Terex Cranes** has appointed **Tony Marlin** as director of sales for the eastern United States and Canada.
- US-based **Trico Lift**, has signed a co-operation agreement **Modern Group** of Bristol, Pennsylvania.
- **Terex Cranes** has launched a European "Service Plus" 24 hour support hot line for service and spare parts issues.
- **Caterpillar** has appointed **Jesse Greene** and **Miles White** as company directors.
- **Terex** is fighting a US patent verdict against a side conveyor on some of its Powerscreen machines.
- **Cargotec**, owner of **Hiab** loader cranes and **Kalmar** reach stackers, is relocating its deputy CEO to Hong Kong.
- Scotland-based **Rose Access Solutions** has added two **Teupen** Leo tracked spider lifts to its fleet.
- Netherlands-based rental company **G.M. Damsteegt** has taken delivery of its second **Nagano** tracked platform.
- **Sindorf Trading Holland** has ordered a new **Kobelco** CKE2500-2 crawler crane.
- **Demag Cranes** has managed to increase group profits in spite of lower revenues.
- Dutch-based **Hovago** has taken delivery of five new **Liebherr** AT cranes.
- UK rental company **Plant Hire UK** has taken its 500th **JCB** telehandler.
- **Tech-Ops Sevcon** - the manufacturer of electrical systems for aerial lifts and for trucks - has reported a strong rise in revenues.
- Rental software provider **Wynne Systems** has appointed **Victor Grigoraux** as operations manager Europe.
- **Manitowoc** president **Eric Etchart** has been appointed as a non-executive director of **Graco Inc.**
- Italian rental company **Nacanco** has added spider lifts to its fleet and signed a 'cooperation agreement' with **Teupen**.
- **Wolffkran** has made it into two top business charts this year.
- Finnish-based crane group **Havator**, has acquired **Trailer Consult i Östergötland** in Sweden.



Tony Marlin



- **Access Denmark** has been established to distribute **Instant** products in the Danish market.
- **Nicole Engesser** became the first **Vertikal** employee to achieve 10 years with the company, closely followed by **Rüdiger Kopf**, editor of **Kran & Bühne**.
- **Terex** has restored the 10 percent cut in chief executive **Ron DeFeo's** salary.
- Australian mining services company **Goodline** has taken delivery of two new **Tadano** cranes including a **Tadano Faun ATF130G-5**, its biggest crane to date.
- The **Terex** Road facility in Fort Wayne, Indiana, will provide aftermarket support services for **Genie** aerial lifts and telehandlers.
- Finnish-based **Dinolift** has appointed two new distributors in Russia, **Stertil** in Moscow and **JSC Transline** in St Petersburg.
- **John MacGregor**, mobile cranes area sales manager at **Liebherr-Great Britain** is retiring after 27 years with the company.
- UK-based **Vp**, owner of **UK Forks and Hire Station** has reported a solid first half pick-up within its telehandler business.
- **Essex crane** has completed the acquisition of **Coast Crane** and will operate it as a separate business.
- US aerial lift rental company **Trico Lift** has relocated its facility in Northern Virginia from Gainesville to nearby Manassas.
- **Alexander Exner**, chairman of **Palfinger's** supervisory board, has handed over to **Dr Alexander Doujak**.
- **JLG** has revealed details a new **Toucan** range for North America to be launched at **Conexpo**.
- Swiss based **Rent-it** has invested in a number of new truck mounted lifts and transport equipment.
- UK-based **Warren Access** has added a fourth 27 metre **Multitel** MX 270 to its fleet.
- **Snorkel Australia** has bought **IPS** out of its joint venture product support business.
- UK-based **AFI-Uplift** has achieved accreditation to the ISO 14001 and OSHAS 18001 standards.
- The assets of **MLE** of Cudahy, Wisconsin have been acquired by **Universal Mfg** of Lincoln, Nebraska.
- UK-based **Orion Access** has finally purchased a **Multitel** truck mounted lift after 12 years effort by the dealer.
- **Lavendon** has been certified as being ISO14001 compliant in the UK.
- **Zenith Aerial Platforms** will continue under family ownership with **William Butler** joining the business.
- **Snorkel Australia** has appointed **Jorge Boil** as national sales and marketing manager.
- **Eurosupply** has delivered 20 **Hitachi** crawler mounted boom lifts to **HWS**.
- German-based **H.N. Krane** has taken delivery of a new **Liebherr** LG1750 truck mounted lattice boomed crane.



Nicole Engesser



Rüdiger Kopf



John MacGregor



William Butler

See www.vertikal.net news archive for full versions of all these stories