

AW

AERIAL WORK PLATFORM/ACCESS



 **Trojan**
BATTERY COMPANY
MASTER DISTRIBUTOR

PLATINUM
BATTERIES (EUROPE) LTD



**WE WANT YOUR OLD BATTERIES!
GET MONEY FOR YOUR SCRAP**

Platinum Batteries (Europe) Ltd are the exclusive Master Distributor in the UK for Trojan Battery Company, the world's number one deep cycle battery manufacturer.

- Comprehensive product range
- 99% availability guaranteed all year round
- Next day, own fleet delivery service, nationwide
- No minimum order quantity or carriage charges
- Full technical support & field sales support
- Maximum value paid for your scrap batteries

For more information, Contact us on

Telephone **0845 402 2013** Email sales@platinumbatteries.co.uk
or visit platinumbatteries.co.uk

Record attendance for Executive Hire Show



The UK's Executive Hire Show, held once again in Coventry, attracted over 2,000 visitors this year, boosted in part by an astonishing 318 representatives from A-Plant, and over 40 visitors each from Brandon, GAP and Hirebase.

Hook-Up Solutions' 1.5 tonne Hooka pick & carry crane was one of the eye catching lifting exhibits at the show. Designed to lift and move bulk building materials, the Hooka is mounted on a Hinowa tracked chassis and can lift up to 1.5 tonnes, including pallets or bulk bags to a height of 2.65 metres or place the load on its carry deck.

Youngman unveiled 14 new and five improved components for its BoSS scaffold system. It also had a new low level tower on show that can be made from standard BoSS components, multiple units can be linked together.

Power Towers exhibited its new 4.2 metre Ecolift - the big brother to its highly successful Pecolift - with 700mm more working height. An outdoor version is also available which can operate on grades of up to three degrees and winds up to 28mph.

Imer, Maber and Lockhard distributor CLM highlighted Lockhard's battery powered Alulift scaffold tower with elevating platform, which can lift up to 250kg to a height of 12 metres, or 24 metres when secured to a building.

Next year's show - its 10th - will be held 10th-11th February in the Ricoh Arena, Coventry



Hook-Up Solutions' new pick & carry crane



Power Tower's 4.2 metre ecolift



Lyte Ladders & Towers launched its glass fibre HiLyte Leader GRP 500 tower and announced it now manufactures Skafray products



Youngman's BoSS low level work system



Euro Towers' prototype storage system with built-in fork pockets



The Spiderlift Company had a 14.9 metre CMC S15 spider lift on display



(L-R) Malcom Kitt of Sky King with Almac export manager Fabrizio Rossi and the auto-levelling Bibi tracked scissor lift



Sumner's prototype counter-lift drywall unit



Lockhard's battery powered Alulift scaffold tower



Weighing just 150kg the five metre Skywinder 300 AT push around lift features rough terrain tyres and outriggers for outdoor use on challenging terrain



Manitou showed its MT 625 telehandler, 100 VJR mast boom (above) and a Gehl R260 skid



Custom Equipments' recently CE-marked 5.66 metre GB1230 self-propelled scissor lift



A Bravi Leobardo HD scissor lift fitted with a construction panel handling attachment



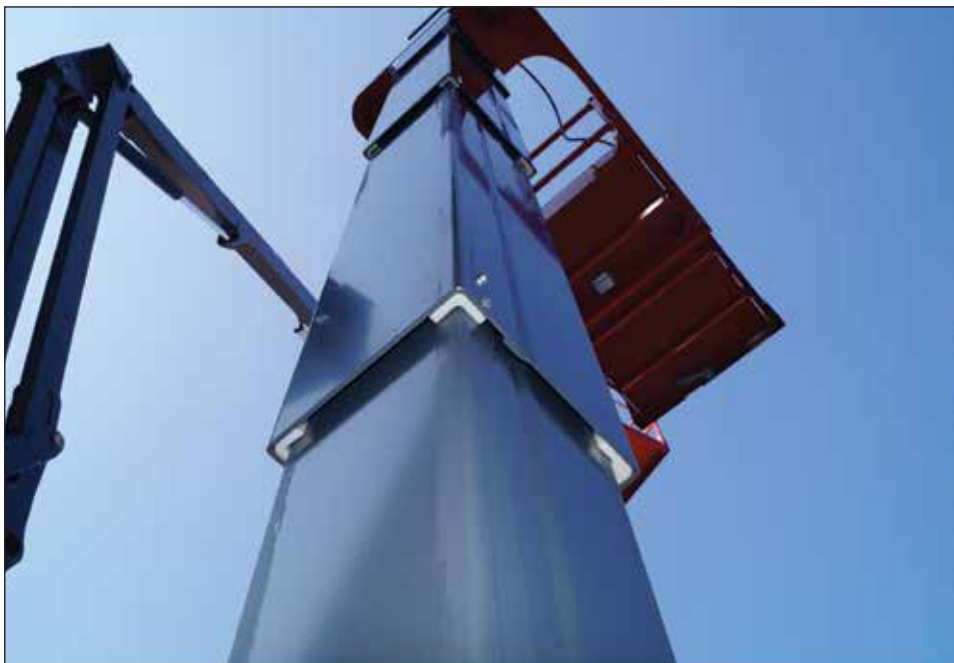
Geda had a number of transport and material platforms on show including its 300Z



Hird has recently taken on Power Jack's range of load links with capacities from 12.5 to 500 tonnes



Elebia announced it has incorporated load scales to its range of automatic crane hooks



ENHANCING PERFORMANCE AND EFFICIENCY THROUGH ENGINEERING DESIGN & PRODUCT DEVELOPMENT

✉ construction@nylacast.com
 🌐 www.nylacast.com



NYLACAST
 ENGINEERING PLASTIC SOLUTIONS