

2012

**IPAF Summit**

March 29th 2012  
Annual Summit for International Powered Access Federation, Rome, Italy  
Tel: +44(0)1539562444  
www.ipaf.org

**Intermat 2012**

International construction equipment show  
April 16th-21st  
2012 Paris, France  
Tel: +33 1 49685248  
www.intermat.fr

**North Sea Offshore Cranes and Lifting Conference**

April 24-26, 2012  
Aberdeen, UK  
Tel: +47 67 52 60 10  
Website: www.liftingoffshore.com

**EWPA National Convention**

Australian work platform convention. May 1st- 4th 2012  
Gold Coast, Queensland, Australia  
Tel: 02 9997 5133  
www.ewpa.com.au

# Whats on?

**Hillhead 2012**

June 23rd-25th 2012  
International quarrying and recycling show.  
Buxton, Derbyshire, UK  
Tel: +44 (0) 115 945 3890  
www.hillhead.com

**Vertikal Days 2012**

UK/Ireland crane and access event  
June 27th-28th 2012  
Haydock Park, UK  
Tel: +44 (0) 8448 155900  
Fax: +44 (0) 1295 768223  
www.vertikaldays.net

**CTT 2012**

Russian equipment show  
May 29th - June 2nd 2012  
Moscow, Russia  
Tel: +49 89 949 22 116  
www.ctt-moscow.com

**CICA Conference 2012**

Australian crane industry conference  
September 5th-7th 2012  
Adelaide, Australia  
Tel: +61 (0)3-9501 0078  
www.cica.com.au

**Platformers Days**

German Access equipment event  
7th-8th September 2012  
Hohenroda, Germany  
Tel: +49 (0) 5031972838  
www.platformers-days.de

**Europlatform**

European access conference  
September. 20th 2012.  
Edinburgh, Scotland.  
Tel: +44 (0) 15395 62444  
www.ipaf.org

**Verticaaldagen Benelux**

Benelux lifting event  
September 21st-22nd 2012  
Safaripark Beekse Bergen, Netherlands  
Tel: +31 (0)6 30 421 042  
www.verticaaldagen.net

**SAIE 2012**

Bologna Fair, building products.  
October 2012, Bologna, Italy  
Tel: +39 051 282111  
www.bolognafiere.it

**Big Five 2012**

November 21st-24th 2011.  
Middle East construction show  
Dubai, UAE  
Tel: +49 (0) 89 949 22 0  
www.thebig5exhibition.com

**Bauma China 2012**

Leading Chinese Equipment show  
November 27th-30th 2012  
Tel: +49(0)89 9 4920251  
www.bauma-china.com

**2013/2014**

**ARA / Rental Show 2013**

Las Vegas. Feb 10th- 13th 2012  
Tel: +1800 334 2177  
www.therentalshow.com

**Bauma 2013**

World's largest construction equipment exhibition,  
April 19th-25th 2013  
Munich, Germany  
Tel: +49 (0) 89 51070  
www.bauma.de

**Conexpo 2014**

The leading US equipment show  
March 4th-8th 2014  
Las Vegas, Nevada, USA  
Tel: +1 414-298-4133  
www.conexpoconagg.com

Visit [www.Vertikal.net/en/events](http://www.Vertikal.net/en/events) for a full listing of events with direct links to the organisers.

# Marketplace

RECRUITMENT . USED EQUIPMENT . REPLACEMENT PARTS . RENTAL . SAFETY EQUIPMENT

ADVERTISEMENT

**M. Stemick GmbH**  
Kran- u. Baumaschinenhandel  
**CRANES FOR SALE**

**ALL TERRAIN-CRANES**

Make / Type	y. o. m.	Drive	Boom / Fly Jib
30t PPM ATT 335	1997	4x4x4	27,40m + 15,00m
35t PPM ATT 400	1998	4x4x4	30,40m + 15,00m
35t Liebherr LTM 1035-3	1987	6x4x6	30,00m + 8,30m
35t PPM ATT 400/3	2001	4x4x4	30,40m + 15,00m
40t Demag AC 40	1999	6x4x6	31,20m + 13,00m
50t Marchetti MG 50.3	1992	6x6x6	32,00m + 16,00m
55t Liebherr LTM 1055/1	2003	6x6x6	40,00m + 16,00m
60t Terex-Demag AC 60 City	2003	8x8x8	50,40m + 14,00m
60t Liebherr LTM 1060/2	2000	8x6x8	42,00m + 17,00m
60t Faun ATF 60-4	1998	8x6x8	40,00m + 16,00m
70t Liebherr LTM 1070	1994	8x8x8	42,00m + 16,00m
80t Terex-Demag AC 80-2	2007	8x6x8	50,00m + 17,00m
80t Liebherr LTM 1080/1	2000	8x8x8	48,00m + 19,00m
100t Grove GMK 3100	2001	10x8x10	51,00m + 18,00m
100t Liebherr LTM 1100-4.1	2005	8x8x8	52,00m + 19,00m
100t Grove GMK 4100 L	2007	8x8x8	60,00m + 17,00m
120t Terex-Demag AC 120-1	2008	10x8x8	60,00m + 17,00m
130t Grove GMK 5130-1	2005	10x8x10	60,00m + 26,00m
160t Grove GMK 5160	1996	10x8x10	49,00m + 18,00m
300t Demag AC 300 SL	2001	12x8x8	58,00m + 65,00m

**ROUGH-TERRAIN CRANES - RT MOBIL KRAN**

Make / Type	y. o. m.	Drive	Boom / Fly Jib
25t Kato KR 250 E	1997	4x4x4	26,70m + 7,00m

**LATTIC-BOOM-TRUCK CRANE**

Make / Type	y. o. m.	Drive	Boom / Fly Jib
130t Liebherr LG 1130	1976	12x6x8	70,00m + 63,00m

**YARD CRANE**

Make / Type	y. o. m.	Drive	Boom / Fly Jib
14t Demag V73	1983	4x2x2	13,50 m + 5,50 m

M. Stemick GmbH  
Kran- u. Baumaschinenhandel  
Import - Export  
D-45721 Haltern / Germany  
Tel: +49-2364 - 108203  
Fax: +49-2364 - 15546  
Mobile: +49-172-2332923  
e-Mail: info@stemick-krane.de  
Internet: http://www.stemick-krane.de

## cranes & access

FOR USERS & BUYERS OF LIFTING EQUIPMENT

Cranes & Access reaches over six times as many UK/Irish buyers of aerial lifts and lifting equipment than any other crane or access magazine, along with an exceptionally strong international readership, with over 15,000 lifting related professionals around the world reading either the printed or online editions of the magazine.

Given the wide global readership you will be surprised at how cost effective it can be as a medium to promote your products or services.

**ADVERTISING:**

The Vertikal Press Ltd.  
PO Box 6998, Brackley,  
NN13 5WY UK.  
Tel: +44 (0)8448 155900  
Fax: +44 (0)1295 768223  
E-mail: advertising@vertikal.net

**GERMANY:**

+ (49) (0)761 189786615.

RECONDITIONING • HIRE • WANTED • USED EQUIPMENT • SPARE PARTS • RECRUITMENT



**EMERSON CRANE HIRE**

Is currently recruiting:

**MOBILE CRANE OPERATORS  
APPOINTED PERSONS  
LIFT SUPERVISORS  
SLINGER/SIGNALLERS**

Good rates of pay offered, working from our East London depot, CPCS qualifications are required.

Please send C.V.'s via email:

**jonathan@emersoncranes.co.uk**

Or by post: Emerson Crane Hire Ltd., Emerson House, Freshwater Road, Dagenham, Essex, RM8 1RX.

**For further information please contact:  
Jonathan Callow on 020 8548 3900**

## Position Wanted

### Rigger/AP and IPAF Operator

Location: Humberside – willing to travel

**CPCS Appointed** person and Slinger/signaller (also OPITO level 3 rigger) available for work anywhere in the UK for long/short term contracts.

I am a time served mech fitter with experience in the machine moving industry along with gas terminal/power station experience.

I hold an in date safety passport (CCNSG) and SSTS site supervisor safety training scheme certificate along with a RTITB licence to operate a 5t counterbalance forklift.

**Call Gavin Watters  
Tel: +44 (0)7973 303906**

## SERVICE ENGINEER REQUIRED

**CTE UK Ltd**, the UK Dealership of the leading Italian manufacturer CTEspa in Italy, are looking for an experienced Service Engineer to be based at our premises in Enderby, Leicestershire.

CTE manufacture a large range of truck and tracked access platforms, and we are looking for a service engineer who will be responsible for carrying out servicing & maintenance, on site refurbishment of machines, major repairs as well as general PDI and field repairs.

The successful applicant must possess excellent electrical, mechanical & hydraulic knowledge, be able to work under pressure, work individually or as part of a team, and must be able to work closely with customers. Ideally the applicant needs to hold the relevant IPAF PAL Card Licence and a CAP Engineer would be preferable.

We offer an excellent salary, 22 days holiday plus Bank Holidays and a van will be provided for business use.

Enderby, Leicester. LE19 4SD  
UNITED KINGDOM

[www.ctelift.com](http://www.ctelift.com)



To apply please send your CV by e:mail or post to Graeme Hill, General Manager at CTE UK Ltd. [ghill@cte-uk.co.uk](mailto:ghill@cte-uk.co.uk)

## Find that person

**Looking for Crane, Access  
or Telehandler people?  
Looking for a job?**

Then why not start right here in the new **Cranes&Access** recruitment section?

With your support we can build a highly useful **recruitment resource** for the industry right within the UK and Ireland's only dedicated publication.

Call or email us today to find out about our great start up rates Jobs Wanted ads are free through 2011.

**+44 (0) 8448 155900**

If responding to one of the ads please say you saw it in **Cranes&Access**.

**Vertikal**  
net

**cranes  
& access**

We have expanded our access hire operation and relocated to a new facility based in Milton Keynes, and need the following personnel to join our existing team.



**Hire Account Manager** We are looking for an experienced access hire account manager to help expand our successful hire business; the position would involve building up new customers and would suit someone who likes to work with a motivated team. This position will also offer the chance for the person to grow with the company as it expands.

**Based.** 60 mile radius of Milton Keynes. If you are based further then feel free to speak to us.

**Salary.** Attractive package offered

**Service Engineer** We are looking for an experienced access engineer to be based at our Milton Keynes facility.

Ability to fault find both electrically and hydraulically, also refurbishment of machines would be an advantage. Would need to hold all the relevant cards including PAC IPAF ect.

To apply, please send your CV by email or post to **Chris Caney** Managing Director.

**Chris@platformsales.co.uk**

## King Highway Products Limited Service Engineer Required

Ideally located in the north west of England.

**King Highway Products** is one of the UK's largest aerial access platform distributors and traffic management vehicle manufacturers.

The **SkyKing** range of aerial access platforms ranges from the 12.5 metre van mounted platforms up to the 103 metre Palfinger/Wumag WT1000. The Traffic Management range includes the market leading vehicle mounted Impact Protection System plus a large number of lighting board solutions.

We are looking for an experienced service engineer to service, maintain and carry out diagnostics & repairs to our large range of access platforms & traffic management equipment.

The successful applicant must possess excellent electrical, mechanical & hydraulic knowledge, be able to perform under pressure, work individually and as part of a team, have a positive attitude & an aptitude to develop with the business.

**To apply please send your CV to:** Scott Hinshelwood, King Highway Products Limited, Riverside, Market Harborough LE16 7PX or [aftersales@kinghighway.co.uk](mailto:aftersales@kinghighway.co.uk)



## MANLIFT

### The Position

Senior Technician – Aerial Work Platforms  
Location: Doha, Qatar  
Salary: Competitive tax free salary  
Ref: VNSTQR



### The Role

We are currently searching for an experienced Field Service Technician for AWP's. In this position you will be responsible for providing breakdown assistance, routine services, trouble shooting queries and rental fleet maintenance tasks.

You will be a part of a dynamic team, dedicated and driven to ensure all internal and external customers are dealt with promptly and professionally.

### Key Competencies

- 3 years or more experience repairing/maintaining Access Platform equipment
- Additional plant machinery experience an advantage
- Thorough knowledge of AWP diagnostic equipment and procedures
- Tertiary engineering qualification advantageous
- Ability to work both independently & as part of a culturally diverse team
- Excellent English (Both written and spoken) is essential

If you have the skills and desire to work for a quality employer, please forward a copy of your current CV to: [hr@manliftgroup.com](mailto:hr@manliftgroup.com)

### The Manlift Group

Manlift Qatar LLC is a leading supplier of powered access equipment for rental in the gulf state. The Manlift Group with its Dubai based headquarters has one of the largest platform fleets in the Middle East comprising of very high quality products from JLG, Genie, Upright, Teupen and MEC covering heights of up to 50 meters.



[www.manliftgroup.com](http://www.manliftgroup.com)

## Sales/Technical Representative

Hetronic UK provides a full range of radio remote control systems for a wide variety of applications. For more information on Hetronic UK and our range of products, visit our website: [www.hetronic.co.uk](http://www.hetronic.co.uk).

We are looking for a mature person with both commercial and technical skills.

You will be acquiring new clients and will find new markets for our product.

### Qualifications:

- Must be capable to understand multiple technical applications of the product in different sectors
- Must be flexible
- Previous experience with industrial radio remote controls is a must
- You will be client and service focused

**Home office • Base salary • Sales commission**

### Contact information:

Please forward your CV with a covering letter to [careers@hetronic.co.uk](mailto:careers@hetronic.co.uk)



• USED EQUIPMENT • SPARE PARTS • RECRUITMENT • RECONDITIONING • HIRE • WANTED •

## AREA SALES MANAGERS - SCOTLAND

Due to expansion of 1st Access Rentals based in Motherwell, opportunities exist for two additional Sales Persons.

Whilst experience in any sector of the rental industry is advantageous, applications will be seriously considered from anybody who is sales oriented, driven, disciplined and determined to succeed.

A generous package is available including attractive salary, monthly profit bonus, Audi A4 car fully expensed.

If you are sure that you can succeed by hard work backed by our CRM system that provides all your sales leads email your CV to:

**Lynne McCallum Deputy Managing Director**

**Email: [lynne@1staccessrentals.co.uk](mailto:lynne@1staccessrentals.co.uk)**

*1st Access Rentals is part of the Kimberly Group*

**[www.1staccessrentals.co.uk](http://www.1staccessrentals.co.uk)**



## GOING UP IN THE WORLD

**A history of Simon Engineering, the development of the powered access industry and a lifetime as an engineer, by Denis Ashworth**

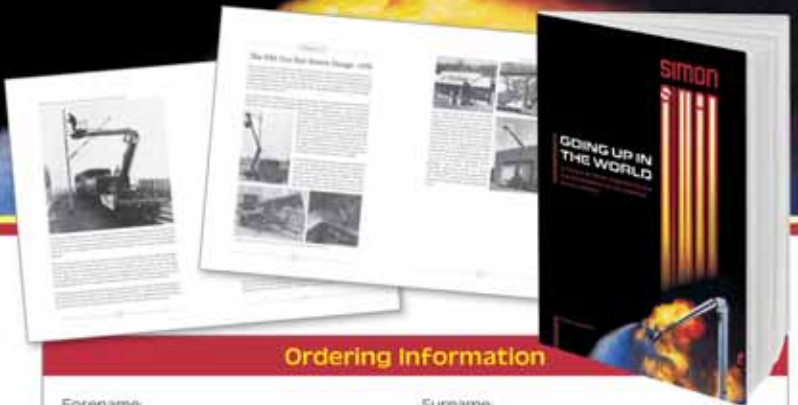
Ashworth was a keen engineer and from an early age found himself in at the very start of the modern powered access industry.

His book is an unusual combination of autobiography and history of Simon Engineering Dudley, a pioneer of the powered access industry and at one time, the world's largest manufacturer of aerial lifts.

The coffee table sized book, is highly readable and includes around 150 photographs and drawings from the very beginning of the industry. It is a 'must read' for anyone who is interested in powered access, the hydraulic equipment industry or in comparing modern day engineering challenges with those of an entirely different era.

The book is available direct from the publishers at £19.50, plus £4.50 postage and packing.

- Continental Europe €23 plus €6.50 postage & packing
- Rest of world \$31 plus \$10 shipping



### Ordering Information

Forename: \_\_\_\_\_ Surname: \_\_\_\_\_

Address: \_\_\_\_\_

Post Code: \_\_\_\_\_

Email: \_\_\_\_\_ Telephone: \_\_\_\_\_

**Please make all cheques payable to 'The Vertical Press Ltd'**

I enclose a cheque for £24 (E19.50 + £4.50 p&p)

I enclose a cheque for €29.50 (€23 + €6.50 p&p)

I enclose a cheque for \$41 (\$31 + \$10 p&p)

Please invoice me: \_\_\_\_\_

Please debit my card:

Card No: \_\_\_\_\_ Issue No: \_\_\_\_\_

Issue Date: \_\_\_\_\_ Expiry Date: \_\_\_\_\_ 3 Digit Security Code: \_\_\_\_\_

Signature: \_\_\_\_\_ Date: \_\_\_\_\_

Please send completed order form to: The Vertical Press, Box 6998 Brackley, NN13 5WY, UK. Alternatively, fax it through on +44(0)1295 768225 or scan & email [info@vertical.net](mailto:info@vertical.net)

# Kran & Bühne

DAS MAGAZIN FÜR KRAN- UND ARBEITSBÜHNEN-ANWENDER

## Ihr Vorteil!

Um leistungs- und wettbewerbsfähig zu bleiben, benötigt die Industrie gerade bei härteren Marktbedingungen hochqualifizierte und ihre Märkte betreffende Informationen. Diesem Verlangen kommt Kran & Bühne mit praxisorientierten Artikeln nach, die dem Leser helfen, fundierte Entscheidungen zu treffen. Die Artikel werden von einem erfahrenen, international und in Deutschland tätigen Journalistenteam verfasst. Kran & Bühne liefert dem Leser harte Fakten darüber, welche Ausrüstung für welche Einsätze geeignet ist, sowie Neuigkeiten und Baustellenberichte.



Name/Vorname: \_\_\_\_\_  
 Firma: \_\_\_\_\_  
 Umsatzsteuernummer (nur bei Firmen) \_\_\_\_\_  
 Straße/Postfach: \_\_\_\_\_  
 Postleitzahl/Ort: \_\_\_\_\_  
 Land: \_\_\_\_\_  
 Tel: \_\_\_\_\_  
 Fax: \_\_\_\_\_  
 E-mail Address: \_\_\_\_\_  
 1. Unterschrift des Abonnenten: \_\_\_\_\_

Ich wünsche folgende Zahlungsweise:

- Bargeldlos per Bankeinzug (nur in Deutschland)  
 gegen Rechnung

Kontonummer: \_\_\_\_\_  
 Bankleitzahl: \_\_\_\_\_  
 Geldinstitut: \_\_\_\_\_  
 Firma: \_\_\_\_\_  
 Postleitzahl/Ort: \_\_\_\_\_

Hiermit bestätige ich, dass die Abbuchung des jährlichen Abo-Betrages von € 26.00 für o.g. Firma/Anschrift vorgenommen werden kann.

2. Unterschrift des Abonnenten: \_\_\_\_\_

**Abonnieren Sie jetzt einfach und bequem!**

per Fax: (0761) 88 66 814  
 oder per Post: Kran & Bühne  
 Sundgauallee 15 D-79114 Freiburg  
 Tel: (0761) 89 78 66-0 Fax: (0761) 88 66 814  
 E-mail: info@Vertikal.net www.Vertikal.net

**Vertikal**.net



[www.accessplatforms.com](http://www.accessplatforms.com)

PILL WAY, SEVERIN BRIDGE IND ESTATE, CALDICOT, MONMOUTHSHIRE, NP26 5PU - UK

+44 (0) 1291 421155

This is a small selection of our available stock.

Please visit our regularly updated website to view our full selection.



experts in  
**powered access  
 solutions**



### Genie Z30/20N

Self Propelled  
 Articulated Platform  
 2006, 11.14m (36.76ft) Work-  
 ing Height  
 Non-Marking Tyres



### Compact 10 DX 4x4

Diesel Scissor Platform  
 2005, 10.14m (33.46ft) Work-  
 ing Height  
 Hydraulic Out-Riggers  
 Foam Filled Tyres



### Genie Z45/25J

Self Propelled  
 Articulated Platform  
 2005, 16.07m (53.03ft) Work-  
 ing Height  
 Bi-Energy



### Manitou 165 AET 4x4

Self Propelled  
 Articulated Platform  
 2001, 16.25m (53.63 ft) Work-  
 ing Height, Foam Filled Tyres,  
 Rough Terrain



### SkyJack 4632

Electric Scissor Platform  
 2005, 12m (39.60ft) Working  
 Height  
 Non-Marking Tyres  
 Slide-Out Deck



### Genie IWP 20S

Personnel Platform  
 2007, 8.22m (27.13ft) Work-  
 ing Height  
 Battery & Charger



### Bravi Lui Mini

Personnel Platform  
 2005, 4.9m (16.17ft) Working  
 Height  
 Non-Marking Tyres  
 Battery & Charger



### Genie Z34-22N

Self Propelled Articulated Plat-  
 form  
 2006, 12.52m (40.6ft) Working  
 Height  
 Non-Marking Tyres, Electric



### JLG 260MRT 4x4

Diesel Scissor Platform  
 2006, 10m (32ft)  
 Working Height  
 Foam Filled Tyres

## Access Equipment Manufacturers

Ascendant Access	<a href="http://www.ascendantaccess.com">www.ascendantaccess.com</a>
Aichi	<a href="http://www.aichi-corp.jp">www.aichi-corp.jp</a>
AIRO	<a href="http://www.airo.com">www.airo.com</a>
Alimak Hek	<a href="http://www.alimakhek.com">www.alimakhek.com</a>
Altrex B.V.	<a href="http://www.altrex.com">www.altrex.com</a>
ATN	<a href="http://www.atnplatforms.com">www.atnplatforms.com</a>
Barin	<a href="http://www.barin.it">www.barin.it</a>
Basket	<a href="http://www.basket-platforms.com">www.basket-platforms.com</a>
Bil jax	<a href="http://www.biljax.com">www.biljax.com</a>
Böcker Maschinenwerke	<a href="http://www.boecker-group.com">www.boecker-group.com</a>
Bravi	<a href="http://www.braviisol.com">www.braviisol.com</a>
CMC	<a href="http://www.cmc-platforms.com">www.cmc-platforms.com</a>
CTE	<a href="http://www.ctelift.com">www.ctelift.com</a>
Cumberland Industries	<a href="http://www.cumberlanduk.co.uk">www.cumberlanduk.co.uk</a>
Denka Lift	<a href="http://www.denkalift.com">www.denkalift.com</a>
Dino Lift	<a href="http://www.dinolift.com">www.dinolift.com</a>
Dingli	<a href="http://www.cndingli.com">www.cndingli.com</a>
Esda	<a href="http://www.esda-fahrzeugwerke.de">www.esda-fahrzeugwerke.de</a>
Falck Schmidt	<a href="http://www.tcalift.com">www.tcalift.com</a>
Fraco	<a href="http://www.fraco.com">www.fraco.com</a>
Genie	<a href="http://www.genieindustries.com">www.genieindustries.com</a>
GSR Spa	<a href="http://www.gsrspa.it">www.gsrspa.it</a>
Haulotte	<a href="http://www.haulotte.com">www.haulotte.com</a>
Hinowa Tracked Aerial Platforms	<a href="http://www.hinowa.com">www.hinowa.com</a>
Holland Lift	<a href="http://www.hollandlift.com">www.hollandlift.com</a>
Isoli	<a href="http://www.isoli.com">www.isoli.com</a>
Iteco	<a href="http://www.itecolift.it">www.itecolift.it</a>
JLG	<a href="http://www.jlgeurope.com">www.jlgeurope.com</a>
Leader	<a href="http://www.leader-piatt.it">www.leader-piatt.it</a>
Leguan Lifts	<a href="http://www.leguanlifts.com">www.leguanlifts.com</a>
Manitou	<a href="http://www.manitou.com">www.manitou.com</a>
Mantall	<a href="http://www.mantall.es">www.mantall.es</a>
Matilsa	<a href="http://www.matilsa.es">www.matilsa.es</a>
MEC	<a href="http://www.mec-awp.com">www.mec-awp.com</a>
Nagano	<a href="http://www.kemphoogwerkers.nl">www.kemphoogwerkers.nl</a>
Niftylift	<a href="http://www.niftylift.com">www.niftylift.com</a>
Oil&Steel	<a href="http://www.oilsteel.com">www.oilsteel.com</a>
Omega Platforms	<a href="http://www.omegaplatforms.com">www.omegaplatforms.com</a>
Omme Lift	<a href="http://www.ommelift.dk">www.ommelift.dk</a>
Palazzani Industrie	<a href="http://www.palazzani.it">www.palazzani.it</a>
Palfinger Platforms	<a href="http://www.palfinger-platforms.com">www.palfinger-platforms.com</a>
Planet Platforms	<a href="http://www.planetplatforms.co.uk">www.planetplatforms.co.uk</a>
PB Liftechnik	<a href="http://www.pbgmbh.de">www.pbgmbh.de</a>
Platform Basket	<a href="http://www.platformbasket.com">www.platformbasket.com</a>
Ranger tracked access	<a href="http://www.tracked-access.co.uk">www.tracked-access.co.uk</a>
Ruthmann	<a href="http://www.ruthmann.de">www.ruthmann.de</a>
Skako	See Denka or TCA
Skyhigh	<a href="http://www.skyhigh.be">www.skyhigh.be</a>
Skyjack	<a href="http://www.skyjack.com">www.skyjack.com</a>
Snorkel	<a href="http://www.snorkelusa.com">www.snorkelusa.com</a>
Socage	<a href="http://www.socage.it">www.socage.it</a>
SUP	<a href="http://www.supelefant.com">www.supelefant.com</a>
TCA Lift	<a href="http://www.tcalift.com">www.tcalift.com</a>
Teupen	<a href="http://www.teupen.info">www.teupen.info</a>
Turner Access	<a href="http://www.turner-access.co.uk">www.turner-access.co.uk</a>
Upright International	<a href="http://www.upright.com">www.upright.com</a>
Versalift distributors (UK)	<a href="http://www.versalift.co.uk">www.versalift.co.uk</a>
Youngman	<a href="http://www.youngmangroup.com">www.youngmangroup.com</a>

## Alloy Scaffold Towers

Altrex	<a href="http://www.altrex.com">www.altrex.com</a>
Eurotowers	<a href="http://www.eurotowers.co.uk">www.eurotowers.co.uk</a>
Industrial Access Romania	<a href="http://www.industrialaccess.ro">www.industrialaccess.ro</a>
Instant	<a href="http://www.instantupright.com">www.instantupright.com</a>
Planet Platforms	<a href="http://www.planetplatforms.co.uk">www.planetplatforms.co.uk</a>
Svelt	<a href="http://www.svelt.it">www.svelt.it</a>
Turner Access	<a href="http://www.turner-access.co.uk">www.turner-access.co.uk</a>
Youngman	<a href="http://www.youngman.com">www.youngman.com</a>

## Mast Climbers & Hoists

Adastra Access	<a href="http://www.adastra-access.co.uk">www.adastra-access.co.uk</a>
Alimak-Hek	<a href="http://www.alimakhek.com">www.alimakhek.com</a>
Harsco Infrastructure	<a href="http://www.harsco-i.com">www.harsco-i.com</a>
Safi	<a href="http://www.safi.it">www.safi.it</a>

## Specialist Scaffolding

Advance	<a href="http://www.advancedscaffoldingltd.co.uk">www.advancedscaffoldingltd.co.uk</a>
Scaffolding (SW)	
Harsco	<a href="http://www.harsco-i.co.uk">www.harsco-i.co.uk</a>

## Platform Rental

2 Cousins Access Limited	<a href="http://www.2cousins.co.uk">www.2cousins.co.uk</a>
AA Access (Specialists)	<a href="http://www.aaaccess.co.uk">www.aaaccess.co.uk</a>
Access Link	<a href="http://www.accesslink.biz">www.accesslink.biz</a>
Access	<a href="http://www.accessplatformsdirect.co.uk">www.accessplatformsdirect.co.uk</a>
Platforms Direct	
Acrolift	<a href="http://www.acrolift.co.uk">www.acrolift.co.uk</a>
Active Rentals Scotland	<a href="http://www.activerentals.co.uk">www.activerentals.co.uk</a>
Advanced Access	<a href="http://www.accessplatformsuk.com">www.accessplatformsuk.com</a>
Platforms	
Aerial Platforms	<a href="http://www.aerialplatformsltd.co.uk">www.aerialplatformsltd.co.uk</a>
AFI- Uplift	<a href="http://www.afi-uplift.co.uk">www.afi-uplift.co.uk</a>
A-Plant	<a href="http://www.aplant.com">www.aplant.com</a>
Bluelift	<a href="http://www.bluelift.ie">www.bluelift.ie</a>
Bucks Access	<a href="http://www.bucksaccessrentals.co.uk">www.bucksaccessrentals.co.uk</a>
Rentals	
Easi up Lifts	<a href="http://www.easiuplifts.com">www.easiuplifts.com</a>
ES Access Platforms	<a href="http://www.esaccess.co.uk">www.esaccess.co.uk</a>
Facelift	<a href="http://www.facelift.co.uk">www.facelift.co.uk</a>
Fraco	<a href="http://www.fraco.co.uk">www.fraco.co.uk</a>
Hewden Stuart	<a href="http://www.hewden.co.uk">www.hewden.co.uk</a>
High Access Hire	<a href="http://www.highaccesshire.co.uk">www.highaccesshire.co.uk</a>
Higher access	<a href="http://www.higheraccess.co.uk">www.higheraccess.co.uk</a>
Hi-reach	<a href="http://www.hi-reach.co.uk">www.hi-reach.co.uk</a>
Horizon Platforms	<a href="http://www.horizonplatforms.co.uk">www.horizonplatforms.co.uk</a>
Industrial Access Romania	<a href="http://www.industrialaccess.ro">www.industrialaccess.ro</a>
Kimberly Access	<a href="http://www.kimberlyaccess.co.uk">www.kimberlyaccess.co.uk</a>
Lifterz	<a href="http://www.lifterz.co.uk">www.lifterz.co.uk</a>
Loxam Access	<a href="http://www.loxam-access.co.uk">www.loxam-access.co.uk</a>
Manlift Hire	<a href="http://www.manlift.ie">www.manlift.ie</a>
Max Access	<a href="http://www.maxaccess.co.uk">www.maxaccess.co.uk</a>
Nacanco - Italy	<a href="http://www.nacanco.it">www.nacanco.it</a>
Nationwide	<a href="http://www.nationwideplatforms.co.uk">www.nationwideplatforms.co.uk</a>
Platforms	
Panther	<a href="http://www.platform-rentals.co.uk">www.platform-rentals.co.uk</a>
Peter Douglass Platforms	<a href="http://www.peterdouglass.co.uk">www.peterdouglass.co.uk</a>
Peter Hird	<a href="http://www.peter-hird.co.uk">www.peter-hird.co.uk</a>
Rapid Platforms	<a href="http://www.rapidplatforms.co.uk">www.rapidplatforms.co.uk</a>
Riwal	<a href="http://www.riwal.com">www.riwal.com</a>
Spiderlift	<a href="http://www.spiderlift.co.uk">www.spiderlift.co.uk</a>
Trac-Access	<a href="http://www.trac-access.com">www.trac-access.com</a>
Universal Platforms	<a href="http://www.universalplatforms.com">www.universalplatforms.com</a>
Wilson Access	<a href="http://www.wilsonaccess.co.uk">www.wilsonaccess.co.uk</a>

## Notified Body

Powered Access Certification	<a href="http://www.pac.uk.com">www.pac.uk.com</a>
------------------------------	--

## Technical Consultancy

Lifting Equipment Technology	<a href="http://www.lettec.org">www.lettec.org</a>
------------------------------	--

## New & Used Platforms

Access Platform Sales	<a href="http://www.accessplatforms.co.uk">www.accessplatforms.co.uk</a>
Advanced	<a href="http://www.aaplatforms.co.uk">www.aaplatforms.co.uk</a>
Access Platforms	
AFI Resale	<a href="http://www.afi-resale.co.uk">www.afi-resale.co.uk</a>
A. J. Access Platforms	<a href="http://www.accessplatforms.com">www.accessplatforms.com</a>
Baulift	<a href="http://www.baulift.de">www.baulift.de</a>
Brodrene Jorgensen AS	<a href="http://www.brjorgen.no">www.brjorgen.no</a>
Caunton -Access	<a href="http://www.cauntonaccess.com">www.cauntonaccess.com</a>
Easi-uplifts	<a href="http://www.easiuplifts.com">www.easiuplifts.com</a>
Facelift	<a href="http://www.facelift.co.uk">www.facelift.co.uk</a>
Flesch	<a href="http://www.Flesch-Arbeitsbuehnen.de">www.Flesch-Arbeitsbuehnen.de</a>
Gantic Norway	<a href="http://www.gantic.no">www.gantic.no</a>
Genie	<a href="http://www.genieindustries.com">www.genieindustries.com</a>
Industrial Access	<a href="http://www.industrialaccess.ro">www.industrialaccess.ro</a>
JLG	<a href="http://www.jlgeurope.com">www.jlgeurope.com</a>
Kemp Hoogwerkers	<a href="http://www.kemphoogwerkers.nl">www.kemphoogwerkers.nl</a>
Kermco	<a href="http://www.kermco.co.uk">www.kermco.co.uk</a>
Kunze GmbH	<a href="http://www.KUNZEgmbh.de">www.KUNZEgmbh.de</a>
Lavendon Sales	<a href="http://www.lavendonsales.com">www.lavendonsales.com</a>
Leader	<a href="http://www.leader-piatt.it">www.leader-piatt.it</a>

Liftright Access	<a href="http://www.liftrightaccess.com">www.liftrightaccess.com</a>
Lisman	<a href="http://www.lisman.nl">www.lisman.nl</a>
Manlift Sales	<a href="http://www.manlift.ie">www.manlift.ie</a>
Mr Machinery	<a href="http://www.mrmachinery.co.uk">www.mrmachinery.co.uk</a>
Mech-Serv (GB)	<a href="http://www.mech-serv.co.uk">www.mech-serv.co.uk</a>
Nacanco	<a href="http://www.nacanco.it">www.nacanco.it</a>
Peter-Hird	<a href="http://www.peter-hird.co.uk">www.peter-hird.co.uk</a>
Tracked Access	<a href="http://www.trackedaccess.com">www.trackedaccess.com</a>
Platform Sales	<a href="http://www.platformsales.co.uk">www.platformsales.co.uk</a>
Platform Sales Europe	<a href="http://www.platformsaleseurope.com">www.platformsaleseurope.com</a>
Promax Access	<a href="http://www.promaxaccess.com">www.promaxaccess.com</a>
Rapid Platforms	<a href="http://www.rapidplatforms.co.uk">www.rapidplatforms.co.uk</a>
Riwal	<a href="http://www.riwal.com/used">www.riwal.com/used</a>
Thanner	<a href="http://www.USED-Worklift.com">www.USED-Worklift.com</a>
Turner Access	<a href="http://www.turner-access.co.uk">www.turner-access.co.uk</a>
TVH - Group Thermote & Vanhalst	<a href="http://www.tvh.be">www.tvh.be</a>
Universal Platforms	<a href="http://www.universalplatforms.com">www.universalplatforms.com</a>
Wilson Access	<a href="http://www.wilsonaccess.co.uk">www.wilsonaccess.co.uk</a>
Worthiplant	<a href="http://www.worthiplant.com">www.worthiplant.com</a>

## Special/Bespoke Access & Lifting Solutions

CRANETECH	<a href="http://www.cranetechgroup.com">www.cranetechgroup.com</a>
GT Lifting Solutions	<a href="http://www.gtliftingltd.co.uk">www.gtliftingltd.co.uk</a>
Kermco	<a href="http://www.kermco.co.uk">www.kermco.co.uk</a>
Liftright Access	<a href="http://www.liftrightaccess.com">www.liftrightaccess.com</a>
Platform Sales	<a href="http://www.platformsales.co.uk">www.platformsales.co.uk</a>
Planet Platforms	<a href="http://www.planetplatforms.co.uk">www.planetplatforms.co.uk</a>
Ranger Equipment	<a href="http://www.spiderlift.co.uk">www.spiderlift.co.uk</a>
H&A Height Services	<a href="http://www.ha-heightservices.com">www.ha-heightservices.com</a>

## Special & Niche Access

Acrolift	<a href="http://www.acrolift.co.uk">www.acrolift.co.uk</a>
Tracked Spider	<a href="http://www.trackedspidersolutions.co.uk">www.trackedspidersolutions.co.uk</a>
Solutions	
Easi UpLifts	<a href="http://www.easiuplifts.com">www.easiuplifts.com</a>
Easy Reach Scotland	<a href="http://www.easyreachscotland.co.uk">www.easyreachscotland.co.uk</a>
Facelift	<a href="http://www.facelift.co.uk">www.facelift.co.uk</a>
High Access Hire	<a href="http://www.highaccesshire.co.uk">www.highaccesshire.co.uk</a>
Higher Access	<a href="http://www.higheraccess.co.uk">www.higheraccess.co.uk</a>
Max Access	<a href="http://www.maxaccess.co.uk">www.maxaccess.co.uk</a>
Panther	<a href="http://www.platform-rentals.co.uk">www.platform-rentals.co.uk</a>
Spiderlift	<a href="http://www.spiderlift.co.uk">www.spiderlift.co.uk</a>
Tracked Access	<a href="http://www.trackedaccess.com">www.trackedaccess.com</a>
Rapid Platforms	<a href="http://www.rapidplatforms.co.uk">www.rapidplatforms.co.uk</a>
Universal Platforms	<a href="http://www.universalplatforms.com">www.universalplatforms.com</a>
Wilson Access	<a href="http://www.wilsonaccess.co.uk">www.wilsonaccess.co.uk</a>

## Telescopic Handlers

Dieci	<a href="http://www.dieci.com">www.dieci.com</a>
Genie	<a href="http://www.genieindustries.com">www.genieindustries.com</a>
Haulotte	<a href="http://www.haulotte.com">www.haulotte.com</a>
Industrial Access	<a href="http://www.industrialaccess.ro">www.industrialaccess.ro</a>
JLG	<a href="http://www.jlgeurope.com">www.jlgeurope.com</a>
Manitou	<a href="http://www.manitou.com">www.manitou.com</a>
Merlo	<a href="http://www.merlo.co.uk">www.merlo.co.uk</a>

## New & Used Telehandlers

Dieci Telehandlers	<a href="http://www.dieci.com">www.dieci.com</a>
Industrial Access	<a href="http://www.industrialaccess.ro">www.industrialaccess.ro</a>
Lisman	<a href="http://www.lisman.nl">www.lisman.nl</a>
Mr Machinery	<a href="http://www.mrmachinery.ie">www.mrmachinery.ie</a>
Riwal	<a href="http://www.riwal.com/used">www.riwal.com/used</a>
VHS Vissers Heftruck Service	<a href="http://www.vhsblad.nl">www.vhsblad.nl</a>

## Telehandler Rental

GT Lifting Solutions	<a href="http://www.gtliftingltd.co.uk">www.gtliftingltd.co.uk</a>
----------------------	--

## Site Safety Audits

Alfa Access Services	<a href="http://www.alfa-access-services.com">www.alfa-access-services.com</a>
----------------------	--

## Industry Associations

ALLMI	<a href="http://www.allmi.com">www.allmi.com</a>
CPA	<a href="http://www.cpa.uk.net">www.cpa.uk.net</a>
EWPA	<a href="http://www.ewpa.com.au">www.ewpa.com.au</a>
IPAF	<a href="http://www.ipaf.org">www.ipaf.org</a>
OSHA	<a href="http://www.osha.gov">www.osha.gov</a>
PASMA	<a href="http://www.pasma.co.uk">www.pasma.co.uk</a>

## Crane Manufacturers

Böcker Maschinenwerke	<a href="http://www.boecker-group.com">www.boecker-group.com</a>
Galizia	<a href="http://www.galiziagru.com">www.galiziagru.com</a>
Grove	<a href="http://www.grovetoworldwide.com">www.grovetoworldwide.com</a>
Jekko	<a href="http://www.jekko.it">www.jekko.it</a>
Kobelco	<a href="http://www.kobelco-cranes.com">www.kobelco-cranes.com</a>
Liebherr	<a href="http://www.liebherr.com">www.liebherr.com</a>
Linden Comansa	<a href="http://www.comansa.com">www.comansa.com</a>
Maeda	<a href="http://www.maedaminicranes.co.uk">www.maedaminicranes.co.uk</a>
Manitowoc	<a href="http://www.manitowoccranes.com">www.manitowoccranes.com</a>
Mantis Cranes	<a href="http://www.mantiscranes.ie">www.mantiscranes.ie</a>
Ormig	<a href="http://www.ormig.co.uk">www.ormig.co.uk</a>
Potain	<a href="http://www.manitowoccranes.com">www.manitowoccranes.com</a>
Sany	<a href="http://www.sany.com.cn">www.sany.com.cn</a>
Sennebogen	<a href="http://www.sennebogen.com">www.sennebogen.com</a>
Spierings	<a href="http://www.spieringskranen.nl">www.spieringskranen.nl</a>
Tadano Faun	<a href="http://www.tadanofaun.de">www.tadanofaun.de</a>
Terex-Demag	<a href="http://www.terex-cranes.com">www.terex-cranes.com</a>
Unic Cranes	<a href="http://www.unic-cranes.co.uk">www.unic-cranes.co.uk</a>
Valla	<a href="http://www.valla-cranes.co.uk">www.valla-cranes.co.uk</a>
Wolffkran	<a href="http://www.wolffkran.de">www.wolffkran.de</a>
Zoomlion	<a href="http://www.zoomlioncranes.co.uk">www.zoomlioncranes.co.uk</a>

## Lorry/Truck Loader Cranes

Atlas Cranes UK	<a href="http://www.atlasgmbh.com">www.atlasgmbh.com</a>
Effer	<a href="http://www.effer.it">www.effer.it</a>
Fassi UK	<a href="http://www.fassiuk.com">www.fassiuk.com</a>
Hiab	<a href="http://www.hiab.com">www.hiab.com</a>
Palfinger	<a href="http://www.palfinger.com">www.palfinger.com</a>

## New & Used Cranes

AGD Equipment	<a href="http://www.agd-equipment.co.uk">www.agd-equipment.co.uk</a>
Cranes UK	<a href="http://www.cranesuk.net">www.cranesuk.net</a>
Crowland Cranes	<a href="http://www.crowlandcranes.co.uk">www.crowlandcranes.co.uk</a>
E.H Hassells	<a href="http://www.hassells.com">www.hassells.com</a>
Electrogen Int	<a href="http://www.electrogen.ie">www.electrogen.ie</a>
Immo Cranes	<a href="http://www.immo-cranes.com">www.immo-cranes.com</a>
Jones-Iron Fairy	<a href="http://www.jonesironfairy.co.uk">www.jonesironfairy.co.uk</a>
Kobelco	<a href="http://www.kobelco-cranes.com">www.kobelco-cranes.com</a>
Leader	<a href="http://www.leader-piatt.it">www.leader-piatt.it</a>
Maeda	<a href="http://www.maedaminicranes.co.uk">www.maedaminicranes.co.uk</a>
Mantis Cranes	<a href="http://www.mantiscranes.ie">www.mantiscranes.ie</a>
M. Stemick	<a href="http://www.stemick-krane.de">www.stemick-krane.de</a>
P.V. Adrighem BV	<a href="http://www.adrighem.com">www.adrighem.com</a>
Rivertek Services	<a href="http://www.rivertekservices.com">www.rivertekservices.com</a>
Terex Demag	<a href="http://www.terex-cranes.com">www.terex-cranes.com</a>
Used Cranes CCK	<a href="http://www.used-cranes.de">www.used-cranes.de</a>
Peter Hird & Sons	<a href="http://www.peter-hird.co.uk">www.peter-hird.co.uk</a>
UCM	<a href="http://www.ucmholland.nl">www.ucmholland.nl</a>

## Crane Hire

Ainscough	<a href="http://www.ainscough.co.uk">www.ainscough.co.uk</a>
Berry Cranes	<a href="http://www.berrycranes.co.uk">www.berrycranes.co.uk</a>
BJW Crane Hire	<a href="http://www.bjwcranehire.co.uk">www.bjwcranehire.co.uk</a>
Bob Francis Crane Hire	<a href="http://www.bobfranciscranehire.co.uk">www.bobfranciscranehire.co.uk</a>
City Lifting	<a href="http://www.citylifting.co.uk">www.citylifting.co.uk</a>
Crane-Hire (East Anglia)	<a href="http://www.cranehireeastanglia.co.uk">www.cranehireeastanglia.co.uk</a>
Emerson Cranes	<a href="http://www.emersoncranes.co.uk">www.emersoncranes.co.uk</a>
Hewden Stuart Ltd	<a href="http://www.hewden.co.uk">www.hewden.co.uk</a>
John Sutch Cranes	<a href="http://www.johnsutchcranes.co.uk">www.johnsutchcranes.co.uk</a>
King Lifting	<a href="http://www.kinglifting.co.uk">www.kinglifting.co.uk</a>
K-Lift	<a href="http://www.k-lift.co.uk">www.k-lift.co.uk</a>
Ladybird tower crane hire	<a href="http://www.ladybirdcranehire.co.uk">www.ladybirdcranehire.co.uk</a>
Mantis Cranes	<a href="http://www.mantiscranes.ie">www.mantiscranes.ie</a>
McNally crane hire	<a href="http://www.cranehire-ireland.com">www.cranehire-ireland.com</a>
Port Services	<a href="http://www.portservices.co.uk">www.portservices.co.uk</a>
Heavy Crane division	

## Mini Crane Hire

A Mini Crane Hire Company	<a href="http://www.aminicranehire.co.uk">www.aminicranehire.co.uk</a>
Easi Up Lifts	<a href="http://www.easiuplifts.com">www.easiuplifts.com</a>
Easy Reach Scotland	<a href="http://www.easyreachscotland.co.uk">www.easyreachscotland.co.uk</a>
Emerson Cranes	<a href="http://www.emersoncranes.co.uk">www.emersoncranes.co.uk</a>
GGR	<a href="http://www.unic-cranes.co.uk">www.unic-cranes.co.uk</a>
Hire Maeda	<a href="http://www.maedaminicranes.co.uk">www.maedaminicranes.co.uk</a>
Industrial Access Romania	<a href="http://www.industrialaccess.ro">www.industrialaccess.ro</a>
JT Mini Crane Hire	<a href="http://www.jtminicranes.co.uk">www.jtminicranes.co.uk</a>
Peter Hird	<a href="http://www.peter-hird.co.uk">www.peter-hird.co.uk</a>
Tracked Access	<a href="http://www.trackedaccess.com">www.trackedaccess.com</a>

## Self Erecting Tower Cranes

Airtek safety	<a href="http://www.airteksafety.com">www.airteksafety.com</a>
City Lifting	<a href="http://www.citylifting.co.uk">www.citylifting.co.uk</a>
Crane-Hire (East Anglia)	<a href="http://www.cranehireeastanglia.co.uk">www.cranehireeastanglia.co.uk</a>
Electrogen Int	<a href="http://www.electrogen.ie">www.electrogen.ie</a>
John Sutch Cranes	<a href="http://www.johnsutchcranes.co.uk">www.johnsutchcranes.co.uk</a>
King Lifting	<a href="http://www.kinglifting.co.uk">www.kinglifting.co.uk</a>
K-Lift	<a href="http://www.k-lift.co.uk">www.k-lift.co.uk</a>
Ladybird tower crane hire	<a href="http://www.ladybirdcranehire.co.uk">www.ladybirdcranehire.co.uk</a>
London Tower Cranes	<a href="http://www.londontowercranes.co.uk">www.londontowercranes.co.uk</a>
Mantis Cranes	<a href="http://www.mantiscranes.ie">www.mantiscranes.ie</a>

## Tower Cranes

Electrogen Int	<a href="http://www.electrogen.ie">www.electrogen.ie</a>
----------------	--

## Heavy Lift Management

DWLS	<a href="http://www.dwls.co.uk">www.dwls.co.uk</a>
------	--

## Heavy Lift Planning & Risk Analysis

DWLS	<a href="http://www.dwls.com">www.dwls.com</a>
HLI Consulting	<a href="http://www.hliconsulting.com">www.hliconsulting.com</a>

## Ancillary Equipment

TMC lifting supplies	<a href="http://www.tmc-lifting.com">www.tmc-lifting.com</a>
----------------------	--

## Auction Houses

Mr Machinery	<a href="http://www.mrmachinery.com">www.mrmachinery.com</a>
Ritchie Brothers	<a href="http://www.rbaction.com">www.rbaction.com</a>

## Battery Manufacturers

Shield Batteries	<a href="http://www.shieldbatteries.co.uk">www.shieldbatteries.co.uk</a>
ManBat	<a href="http://www.manbat.co.uk">www.manbat.co.uk</a>
Trojan Battery	<a href="http://www.trojanbattery.com">www.trojanbattery.com</a>

## Control Systems

MOBA Automation	<a href="http://www.moba.de">www.moba.de</a>
Intercontrol	<a href="http://www.intercontrol.de">www.intercontrol.de</a>

## Generator Sales & Rental

Electrogen Int	<a href="http://www.electrogen.ie">www.electrogen.ie</a>
----------------	--

## Insurance

Specialist Insurance	<a href="http://www.cover1.com">www.cover1.com</a>
----------------------	--

## Online Technical Help

Crane Tools	<a href="http://www.cranetools.com">www.cranetools.com</a>
-------------	--

## Outrigger Pads, Mats & Roadways

BFL Alimats	<a href="http://www.craneriggermats.co.uk">www.craneriggermats.co.uk</a>
Eco power pads	<a href="http://www.outriggerpads.co.uk">www.outriggerpads.co.uk</a>
GTP Europe	<a href="http://www.gtp-europe.com">www.gtp-europe.com</a>
Marwood	<a href="http://www.marwoodgroup.co.uk">www.marwoodgroup.co.uk</a>
Nylacast	<a href="http://www.nylacast.com">www.nylacast.com</a>
Timbermat	<a href="http://www.timbermat.co.uk">www.timbermat.co.uk</a>
TMC lifting supplies	<a href="http://www.tmc-lifting.com">www.tmc-lifting.com</a>
Welex	<a href="http://www.welex.nl">www.welex.nl</a>

## Parts & Service Suppliers

Aerial & Handling Services	<a href="http://www.aerialandhandlingservices.com">www.aerialandhandlingservices.com</a>
Alfa Access Services	<a href="http://www.alfa-access-services.com">www.alfa-access-services.com</a>
Caunton - Access	<a href="http://www.caunton-access.com">www.caunton-access.com</a>
Crowland Cranes	<a href="http://www.crowlandcranes.co.uk">www.crowlandcranes.co.uk</a>
C-Tech Industries	<a href="http://www.ctech-ind.com">www.ctech-ind.com</a>
Davis Access Platforms	<a href="http://www.davisaccessplatforms.com">www.davisaccessplatforms.com</a>
Electrogen Int	<a href="http://www.electrogen.ie">www.electrogen.ie</a>
Industrial Access Romania	<a href="http://www.industrialaccess.ro">www.industrialaccess.ro</a>
IPS	<a href="http://www.ips-ltd.biz">www.ips-ltd.biz</a>
JLG	<a href="http://www.jlgeurope.com">www.jlgeurope.com</a>
TVH - Group Thermote & Vanhalst	<a href="http://www.tvh.be">www.tvh.be</a>
Unified Parts	<a href="http://www.unifiedparts.com">www.unifiedparts.com</a>

## Recruitment

Vertikal.Net	<a href="http://www.vertikal.net/en/recruitment">www.vertikal.net/en/recruitment</a>
--------------	--

## Rental Management Software

Higher Concept Software	<a href="http://www.higherconcept.co.uk">www.higherconcept.co.uk</a>
Inspire	<a href="http://www.inspire.com">www.inspire.com</a>
MCS Rental Software	<a href="http://www.mcs.co.uk">www.mcs.co.uk</a>

## Replacement Filters

Plant Filters	<a href="http://www.plantfilters.co.uk">www.plantfilters.co.uk</a>
---------------	--

## Safety Equipment

AGS	<a href="http://www.ags-btp.fr">www.ags-btp.fr</a>
Airtek equipment	<a href="http://www.airteksafety.com">www.airteksafety.com</a>
Marwood	<a href="http://www.marwoodgroup.co.uk">www.marwoodgroup.co.uk</a>
SMIE	<a href="http://www.smie.com">www.smie.com</a>

## Software

Higher Concept	<a href="http://www.higherconcept.co.uk">www.higherconcept.co.uk</a>
Matusch GmbH	<a href="http://www.matusch.de">www.matusch.de</a>
MCS Rental Software	<a href="http://www.mcs.co.uk">www.mcs.co.uk</a>

## Structural Repairs

Avezaat Cranes	<a href="http://www.avezaat.com">www.avezaat.com</a>
Crowland Cranes	<a href="http://www.crowlandcranes.co.uk">www.crowlandcranes.co.uk</a>
John Taylor Crane Services	<a href="http://www.jtcranes.co.uk">www.jtcranes.co.uk</a>

## Training Associations & Networks

ALLMI	<a href="http://www.allmi.com">www.allmi.com</a>
AWPT	<a href="http://www.awpt.org">www.awpt.org</a>
IPAF	<a href="http://www.ipaf.org">www.ipaf.org</a>
NASC	<a href="http://www.nasc.org.uk">www.nasc.org.uk</a>
Pasma	<a href="http://www.pasma.co.uk">www.pasma.co.uk</a>

## Training Centres & Trainers

Access Platforms Direct	<a href="http://www.accessplatformsdirect.co.uk">www.accessplatformsdirect.co.uk</a>
Access Platform Sales	<a href="http://www.accessplatforms.co.uk">www.accessplatforms.co.uk</a>
Active Safety	<a href="http://www.activerentals.co.uk">www.activerentals.co.uk</a>
Advanced Access Platforms	<a href="http://www.accessplatformsuk.com">www.accessplatformsuk.com</a>
AFI	<a href="http://www.afi-uplift.co.uk">www.afi-uplift.co.uk</a>
Ainscough	<a href="http://www.ainscoughtraining.co.uk">www.ainscoughtraining.co.uk</a>
AJ Access	<a href="http://www.accessplatforms.com">www.accessplatforms.com</a>
Astra Access Safety Training	<a href="http://www.astratraining.co.uk">www.astratraining.co.uk</a>
Atlas Cranes UK	<a href="http://www.atlasgmbh.com">www.atlasgmbh.com</a>
Avon Crane	<a href="http://www.avoncrane.co.uk">www.avoncrane.co.uk</a>
Davis Access Platforms	<a href="http://www.davisaccessplatforms.com">www.davisaccessplatforms.com</a>
Easi-UpLifts	<a href="http://www.easiuplifts.com">www.easiuplifts.com</a>
Emerson Cranes	<a href="http://www.emersoncranes.co.uk">www.emersoncranes.co.uk</a>
ES Access Platforms	<a href="http://www.esaccess.co.uk">www.esaccess.co.uk</a>
Facelift	<a href="http://www.facelift.co.uk">www.facelift.co.uk</a>
Hewden Stuart	<a href="http://www.hewden.co.uk">www.hewden.co.uk</a>
HCS	<a href="http://www.hydrauliccraneservices.co.uk">www.hydrauliccraneservices.co.uk</a>
Hi-Reach	<a href="http://www.hi-reach.co.uk">www.hi-reach.co.uk</a>
Hiab	<a href="http://www.hiab.com">www.hiab.com</a>
Hird	<a href="http://www.peter-hird.co.uk">www.peter-hird.co.uk</a>
Horizon Platforms	<a href="http://www.ipaftrainingcourses.co.uk">www.ipaftrainingcourses.co.uk</a>
HSS	<a href="http://www.hss.com/training">www.hss.com/training</a>
IS Training	<a href="http://www.istraining.co.uk">www.istraining.co.uk</a>
JLG Training	<a href="http://www.jlgeurope.com">www.jlgeurope.com</a>
Kingfisher Access	<a href="http://www.kingfisheraccess.co.uk">www.kingfisheraccess.co.uk</a>
L&B Transport	<a href="http://www.lbtransport.co.uk">www.lbtransport.co.uk</a>
Liebherr Training (UK)	<a href="http://www.liebherr.co.uk">www.liebherr.co.uk</a>
Loxam	<a href="http://www.loxam-access.co.uk">www.loxam-access.co.uk</a>
Lifting Equipment Training	<a href="http://www.letltd.co.uk">www.letltd.co.uk</a>
Mentor Training	<a href="http://www.mentortraining.co.uk">www.mentortraining.co.uk</a>
Nationwide Platforms	<a href="http://www.nationwideplatforms.co.uk">www.nationwideplatforms.co.uk</a>
Norfolk Training Services	<a href="http://www.norfolktraining.co.uk">www.norfolktraining.co.uk</a>
Panther	<a href="http://www.platform-rentals.co.uk">www.platform-rentals.co.uk</a>
Rapid Platforms	<a href="http://www.rapidplatforms.co.uk">www.rapidplatforms.co.uk</a>
Southern Crane & Access	<a href="http://www.southerncranes.co.uk">www.southerncranes.co.uk</a>
TH White	<a href="http://www.thwhite.co.uk">www.thwhite.co.uk</a>
Terex Atlas (UK) Ltd.	<a href="http://www.atlascranes.co.uk">www.atlascranes.co.uk</a>
The Platform Company	<a href="http://www.platformcompany.co.uk">www.platformcompany.co.uk</a>
Teufelberger Seil	<a href="http://www.teufelberger.com">www.teufelberger.com</a>
TMC Lifting	<a href="http://www.tmc-lifting.com">www.tmc-lifting.com</a>
Casar	<a href="http://www.casar.de">www.casar.de</a>
Winches & Hoists	
Rotzler	<a href="http://www.rotzler.com">www.rotzler.com</a>

To arrange your listing in the ACCESS and LIFTING EQUIPMENT DIRECTORY: Tel: 08448 155900 Fax: 01295 768223 Email: info@vertikal.net

**An entry in our online directory with hot-link to your website and publication here costs just £175/€280 for a whole year**



# Subscribe to

# cranes & access

The only way to guarantee that you receive every issue



## Subscription Application Form

Please complete this form and either fax back on +44 (0) 1295 768223 or +49 (0) 7618 866814 or post to The Vertical Press, PO Box 6998, Brackley, NN13 5WY, UK. Tel: +44 (0)8448 155900

Name \_\_\_\_\_

Company \_\_\_\_\_

Job Title \_\_\_\_\_

Telephone \_\_\_\_\_

Address \_\_\_\_\_

Zip/Postcode \_\_\_\_\_

Country \_\_\_\_\_

Telefax \_\_\_\_\_

Email \_\_\_\_\_

Please start my one year subscription to Cranes & Access at the rate of:

£40.00/€60 (UK and Irish addresses only)

€75.00 (Rest of Europe)

\$110.00 / €60.00 (Other regions)

I enclose a cheque made payable to The Vertical Press

Please invoice me

I enclose an international money order

Please charge to my credit card

Name \_\_\_\_\_

Card number \_\_\_\_\_

Expiry date \_\_\_\_\_

Security code \_\_\_\_\_

**Vertical**  
 .net

Subscribe online at [www.vertical.net](http://www.vertical.net)

**SPECIALIST  
INSURANCE AGENCY LTD**

**SPECIALIST  
CONSTRUCTION  
INSURANCE BROKERS**

**PLANT • LIABILITY  
FLEET SCHEMES  
AVAILABLE**

We talk your language and have expert knowledge from experience gained within the industry.

For the complete service please contact:  
**TONY QUICK**

Tel: 0845 1776 666. Fax: 0845 1777 555  
Email: [tony@specialistinsure.com](mailto:tony@specialistinsure.com)

FSA: 309005

**MANUFACTURER OF  
CRANE AND FORKLIFT  
ATTACHMENTS**

- ◆ Concrete skips
- ◆ Self Discharge Boat Skips
- ◆ Circular Muck Skips
- ◆ Access Platforms
- ◆ Plastic Mortar Skips
- ◆ Crane Man Cages
- ◆ Bricks Forks
- ◆ Block Grabs
- ◆ Crane Forks
- ◆ Manhole Ring Clamps
- ◆ Gas Bottle Carriers
- ◆ Fork Lift Tipping Skips

**TO DISCOVER MORE, CALL:**

Head Office & Accounts  
+44 (0)1420 592 900

OR EMAIL: [sales@conquipindustrial.com](mailto:sales@conquipindustrial.com)



**DISTRIBUTORS REQUIRED  
MANUFACTURING, SALES & HIRE**



• USED EQUIPMENT • SPARE PARTS • RECRUITMENT • RECONDITIONING • HIRE • WANTED • USED EQUIPMENT • SPARE PARTS • RECRUITMENT • RECONDITIONING • HIRE • WANTED •



**PLANT & CRANE HIRE**

- FULL PLANT HIRE SERVICE AVAILABLE
- MOBILE CRANES 35-120 TONS
- IRON FAIRY & CITY CRANE
- CPA & CONTRACT LIFT SERVICE
- RIGGERS, SLINGERS - APPOINTED PERSONS
- TEST WEIGHT HIRE
- MACHINERY MOVEMENT SERVICE
- CRUSHERS & SCREENERS
- ROAD BRUSH HIRE
- HIAB & LOW LOADER TRANSPORT
- ALL OPERATORS FULLY CPCS CERTIFIED
- CALL FOR A FREE SITE VISIT AND QUOTATION
- BASED IN GLASGOW



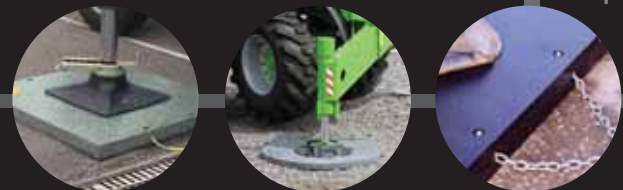
t: +44 (0) 141 646 1212 e: [einfo@ab2000.co.uk](mailto:einfo@ab2000.co.uk)  
[www.ab2000.co.uk](http://www.ab2000.co.uk)



**ECO LIFT  
outrigger pads**

- Manufactured in Germany to the highest standards from regenerated polyethylene
- Safe and easy to handle will not splinter
- No water absorption
- High resistance to impact and vertical pressures
- Under normal working conditions unbreakable
- Inbuilt memory, adapting to working surface
- Custom sizes available
- Supporting - mobile cranes, self erecting tower cranes, loader cranes, aerial work platforms, concrete pumps, tele handlers
- Load bearing capacities from 5 to 300 tonnes
- Lifetime warranty against breakage

The UK's Leading Supplier



**Bill Green @ PLC Sales**

Tel: +44 (0) 1449 674 154 Mob: +44 (0) 7885 020 582

Fax: +44 (0) 1449 674 173

Email: [sales@outriggerpads.co.uk](mailto:sales@outriggerpads.co.uk) Web: [www.outriggerpads.co.uk](http://www.outriggerpads.co.uk)

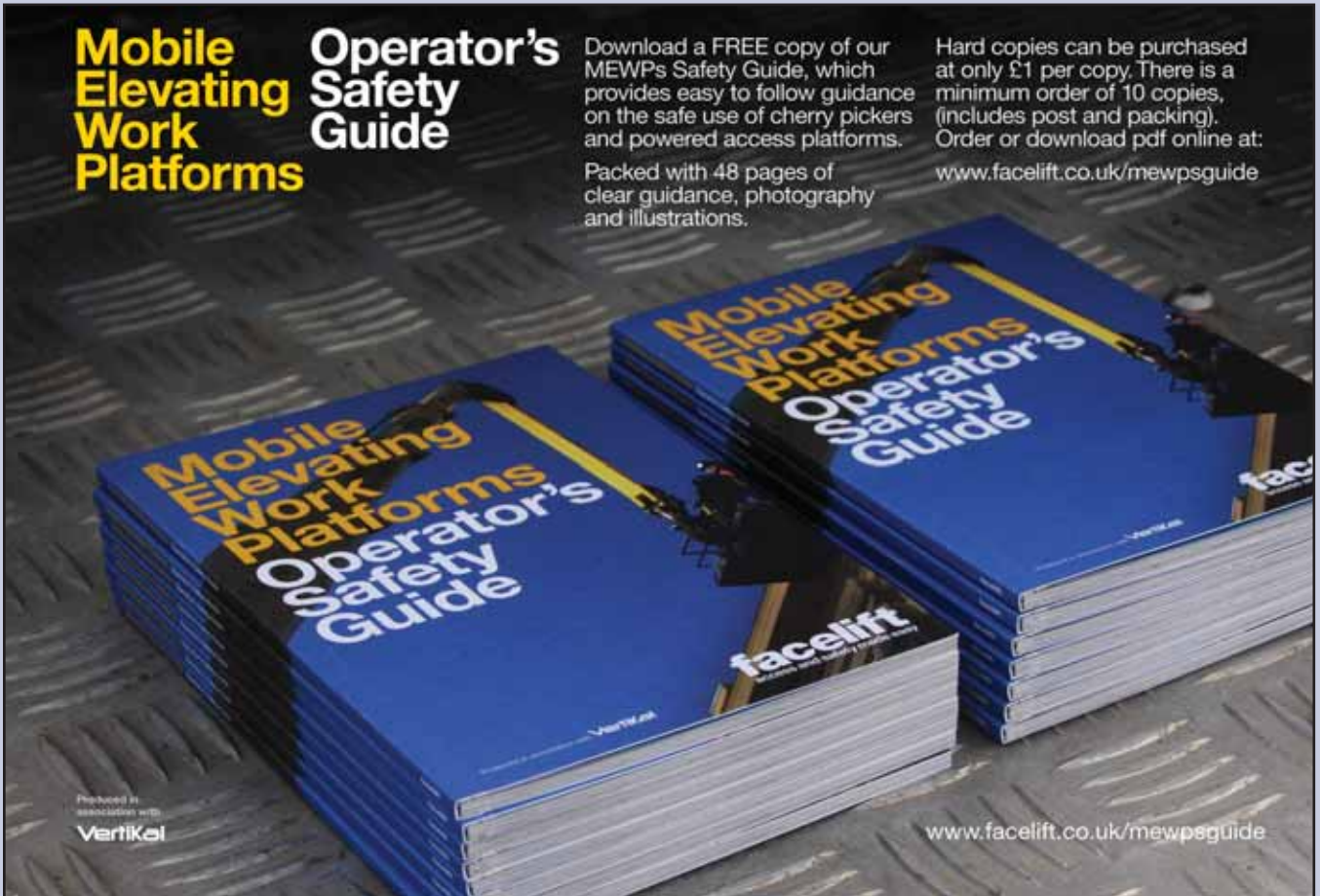
## Mobile Elevating Work Platforms

## Operator's Safety Guide

Download a FREE copy of our MEWPs Safety Guide, which provides easy to follow guidance on the safe use of cherry pickers and powered access platforms.

Packed with 48 pages of clear guidance, photography and illustrations.

Hard copies can be purchased at only £1 per copy. There is a minimum order of 10 copies, (includes post and packing). Order or download pdf online at: [www.facelift.co.uk/mewpsguide](http://www.facelift.co.uk/mewpsguide)



Produced in association with Vertikal

[www.facelift.co.uk/mewpsguide](http://www.facelift.co.uk/mewpsguide)

# Power Pads *The Next Generation*



The fully certified, fully traceable, fully guaranteed, top quality Outrigger support mats

Power Pads are designed, manufactured and certified to the highest standards possible with attention to detail in every aspect in order to ensure the very best value and complete peace of mind.

- All mats carry an indelible unique serial number, a reference code, a batch number and the maximum capacity of the pad.
- Mats up to 600mm are supplied with high quality Certified Rope handles.
- For Mats over 600mm, as standard we use Grade 10 lifting chain.
- All mats carry a clear identity plate with contact details.
- All mats can be branded with the customers corporate identity.

A good set of pads or mats will last a lifetime and provide you with peace of mind that is simply not available with cheaper pads.

For further information on Power Pads contact :

Tel: 01733 211339

[www.tmc-lifting.com](http://www.tmc-lifting.com)



the only fully certified fully traceable mats on the market

# The Vertikal Guide

for buyers and users of lifting equipment

Pour les acheteurs et utilisateurs d'équipement de levage

für Käufer und Anwender der Hebeindustrie



## Don't Forget!

Book space for your  
advertising message now  
while good positions remain,  
copy date March 26th 2012

Cranes  
Telehandlers  
Aerial Lifts

Grues  
Chariots  
Téléscopiques  
Nacelles

Krane  
Bühnen  
Teleskoplader

# INTERMATH

[www.vertikal.net](http://www.vertikal.net)

# WWW.VERTICAALDAGEN.NET

Verticaaldagen Benelux is HET evenement voor verhuurders en gebruikers van:

- mobiele en stationaire verticaalliften
- zelfrijdende schaarplatforms
- zelfrijdende telescoop- en kniotelescoophoogwerkers
- hoogwerkers op aanhanger
- vrachtwagenhoogwerkers op klein en groot rijbewijs
- rupshoogwerkers
- spinhoogwerkers
- hefsteigers
- "starre" telescopische verreikers
- "roterende" telescopische verreikers
- mobiele minikranen



Tevens biedt Verticaaldagen Benelux presentaties van bedrijven die zijn gespecialiseerd in aanverwante diensten, zoals:

- opleidingen voor hoogwerkerbediening
- keuringsinstanties en Notified Bodies
- branche organisaties
- verzekeringen
- financieringen en kredietverstrekking
- automatisering
- marketing- en mediadiensten
- machine componenten zoals batterijen en batterijladers.
- track en trace systemen
- transportmiddelen



**VERTICAAL** 21/22  
**DAGEN** SEP'12  
**BENELUX**

Locatie:  
Safari- en Vakantiepark  
**BEEKSE  
BERGEN**



THE ECO-FRIENDLY SOLUTION

## GANTICHARGER

### The revolutionary new charger

The GantiCharger is made to revive, charge, check and maintain batteries.

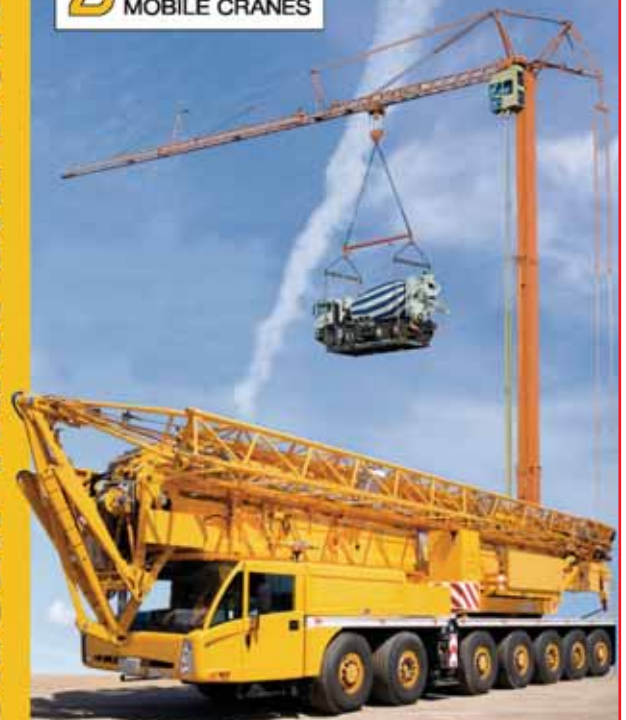
- GantiCharger is designed to reduce the frequency and cost associated with battery replacement.
- GantiCharger is made to both save energy and significantly prolong battery life with reduced maintenance cost.
- GantiCharger prevents overheating the common cause of battery damage.



For UK sales: 07807 348584  
For Dealer enquiries: +47 93405970  
[www.ganticharger.com](http://www.ganticharger.com)

**STRONGER THAN EXPECTED**

**8 SPIERINGS**  
MOBILE CRANES



[www.spieringscranes.com](http://www.spieringscranes.com)  
Mervedestraat 15 5347 KZ OSS The Netherlands Tel +31 412 697777

SK2400-AT7 : Tip load 5.500 kg Max. load 18.000 kg  
Jib length 42 m Max. Hook height 56 m

**ESTA's Experts Summit**

**"Safety Issues in Wind Turbine Installation and Transportation"**

**A one day conference and networking event**

**Wednesday March 14<sup>th</sup> 2012**

**at the  
Courtyard Marriott Hamburg Airport Hotel**  
Hosted by former BBC presenter Peter Hobday

**Speakers to include leading professionals from wind turbine manufacturers, transport and lifting specialists, Insurance companies, power generation companies and lifting and transport equipment suppliers. Focus of the conference will be on how to mitigate safety problems occurring whilst transporting and during installation of wind turbine assemblies.**

The ESTA Experts Summit is an exciting networking, business information and technical event for the leaders of the world's Wind Power industry, their suppliers and manufacturers. The wind summit is supported by Europe's leading crane and transport equipment manufacturers, the equipment manufacturers association FEM and wind turbine manufacturing companies. It is organised by ESTA, the European association for abnormal road transport and mobile cranes.

**ESTA's EXPERTS SUMMIT** tickets include:

- \* One day, top-level conference, including ample networking opportunities
- \* Three course buffet lunch
- \* All coffees, teas and soft drinks during the day
- \* Full delegate packs, including copies of speaker presentations and attendee information
- \* Networking dinner in the Graf Zeppelin restaurant

Ticket fee for the Experts Summit: € 250,- excl. VAT

Order your tickets now at: [www.esta-eu.org/estas-experts-summit-hamburg](http://www.esta-eu.org/estas-experts-summit-hamburg)



# Another good reason to join the CPA...



Find out a  
whole lot more,  
call us on:  
**020 7796 3366,**  
or visit our website:  
**www.cpa.uk.net**

Problems occur at the least expected times, but when they do, support and specialist knowledge from someone on your side is invaluable. The CPA specialists can help with many issues, including training, safety and legal matters.

If dealings with a government department or an industry authority are not going smoothly, CPA can advise on what to do, and can turn to their extensive range of contacts to find the right person to speak to.

This means your problem gets solved quickly and painlessly wherever possible - allowing you to get back to your business.

# Machinery For Sale



Genie Z-45/25J Bi  
Articulated boom  
16m - 2004/5/6/7/8



Genie Z-80/60  
Articulated boom  
26.40m - 2005/6/7/8



Genie S-45  
Stick boom  
15.7m - 2005/6/7



Genie S-125  
Stick boom  
40m - 2005/6/7/8



Genie GS-1932  
Battery scissor lift  
7.80m - 2005/6/7/8

Special Offer!!!



Genie GS-3246  
Battery scissor lift  
11.50m - 2005/6/7/8

Special Offer!!!



SKYJACK SJ-7135  
Diesel scissor lift  
12.50m - 2007/8

Special Offer!!!



Genie GS 5390 RT  
Diesel scissor lift  
18m - 2006/8



Manitou SLT415  
Telescopic forklift  
4m/1.5 Tonne - 2004/5/7



Manitou MT 1740 SLT  
Telescopic forklift  
17m/4 Tonne - 2005



Manitou MT 1840  
Telescopic forklift  
18m/4 Tonne - 2008



Manitou MRT 2150  
Telescopic forklift  
21m/5 Tonne - 2006/7



BRONTO S34MDT  
Truck mounted  
34m - 2002



SIMON SS263  
Truck mounted  
27.8m - 2002



OMME 3000RBD  
Specialised boom  
30m - 2006/7/8



MAEDA MC285CRM-E  
Mini crane  
8.70m/ 2.8 Tonne - 2007

Contact:  
Patrick McArdle  
23 Ashbourne Business Centre  
Ballybin Road, Ashbourne, Co.Meath. Ireland

Tel: +353 (0) 1 835 2835  
Fax: +353 (0) 1 835 2781

 **Easi UpLifts**  
LIMITED

[www.easiuplifts.com](http://www.easiuplifts.com)

E-mail: [patrick.mcardle@heightforhire.ie](mailto:patrick.mcardle@heightforhire.ie)

the access specialists



# 6000

**SKYLIFTS.**

# 120

**COUNTRIES.**

# 112

**METERS REACH.**

# 50

**YEARS OF KNOW-HOW.**

# 1

**COMPETENCE: [WWW.BRONTO.FI](http://WWW.BRONTO.FI)**



**ABOVE ALL.**



**BRONTO  
SKYLIFT®**

# RESALE MACHINES

**AFI**  
RESALE

AFI Resale T. +44 (0)1924 224 392 F. +44 (0)1924 224 391 info@afi-resale.co.uk www.afi-resale.co.uk



**JLG E 450AJ**  
TYPE BOOM LIFT  
YEAR 2003  
POWER ELECTRIC



**HAULOTTE STAR 6**  
TYPE MAST LIFT  
YEAR 2007  
POWER ELECTRIC



**JLG 1930ES**  
TYPE SCISSOR LIFT  
YEAR 2004  
POWER ELECTRIC



**JLG M450A**  
TYPE BOOM LIFT  
YEAR 2000  
POWER BI-ENERGY



**SKYJACK SJ3226**  
TYPE SCISSOR LIFT  
YEAR 2004  
POWER ELECTRIC



**LIFTLUX LL153-12**  
TYPE SCISSOR LIFT  
YEAR 2003  
POWER ELECTRIC



**NIFTYLIFT HR12**  
TYPE BOOM LIFT  
YEAR 2005  
POWER BI-ENERGY



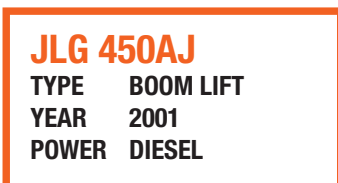
**HAULOTTE C12DX**  
TYPE SCISSOR LIFT  
YEAR 2004  
POWER DIESEL



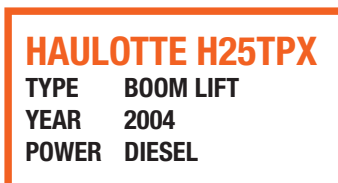
**UPRIGHT XRT27E**  
TYPE SCISSOR LIFT  
YEAR 2001  
POWER ELECTRIC



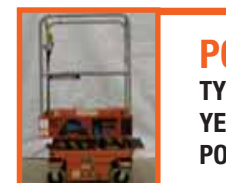
**UPRIGHT X32**  
TYPE SCISSOR LIFT  
YEAR 2002  
POWER ELECTRIC



**JLG 450AJ**  
TYPE BOOM LIFT  
YEAR 2001  
POWER DIESEL



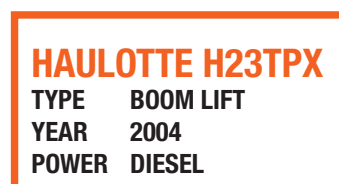
**HAULOTTE H25TPX**  
TYPE BOOM LIFT  
YEAR 2004  
POWER DIESEL



**POP-UP**  
TYPE PUSH AROUND VERTICAL  
YEAR 2007  
POWER ELECTRIC



**NIFTYLIFT HR15N**  
TYPE BOOM LIFT  
YEAR 2003  
POWER BI-ENERGY



**HAULOTTE H23TPX**  
TYPE BOOM LIFT  
YEAR 2004  
POWER DIESEL



**UPRIGHT MX19**  
TYPE SCISSOR LIFT  
YEAR 2005  
POWER ELECTRIC



With AFI Resale, you will find ...

An extensive range of new and used equipment:

- \* Scissor Lifts
- \* Boom Lifts
- \* Mast Lifts
- \* Push Around Vertical Lifts

A comprehensive range of finance options:

- \* Contract rental alternative
- \* Hire purchase
- \* Outright purchase
- \* Lease purchase

Service And Maintenance Packages:

all designed to provide solutions that will meet your individual needs with total peace of mind.



Please note photographs are for illustrative purposes only.

# RESALE MACHINES



AFI Resale T. +44 (0)1924 224 392

F. +44 (0)1924 224 391

info@afi-resale.co.uk

www.afi-resale.co.uk



## GENIE Z34/22 4WD

TYPE BOOM  
YEAR 2006  
POWER DIESEL



## GENIE GS2668 RT 4WD & OUTRIGGERS

TYPE SCISSOR YEAR 2007  
POWER DIESEL



## GENIE Z34/22 4WD

TYPE BOOM  
YEAR 2006  
POWER DIESEL



## GENIE GS2646

TYPE SCISSOR  
YEAR 2006  
POWER ELECTRIC



## GENIE Z34/22 4WD

TYPE BOOM  
YEAR 2006  
POWER DIESEL



## GENIE GS2646

TYPE SCISSOR  
YEAR 2006  
POWER ELECTRIC



## GENIE Z34/22 4WD

TYPE BOOM  
YEAR 2007  
POWER DIESEL



## GENIE GS2632

TYPE SCISSOR  
YEAR 2006  
POWER ELECTRIC



## GENIE GS2646

TYPE SCISSOR  
YEAR 2007  
POWER ELECTRIC



## GENIE GS2668 RT 4WD & OUTRIGGERS

TYPE SCISSOR YEAR 2006  
POWER DIESEL



## GENIE GS3246

TYPE SCISSOR  
YEAR 2007  
POWER ELECTRIC



## GENIE GS3268 RT 4WD & OUTRIGGERS

TYPE SCISSOR YEAR 2006  
POWER DIESEL



## GENIE GS3268 RT 4WD & OUTRIGGERS

TYPE SCISSOR YEAR 2007  
POWER DIESEL



## GENIE GS3268 RT 4WD & OUTRIGGERS

TYPE SCISSOR YEAR 2007  
POWER DIESEL



## GENIE Z45/25 JIB 4WD

TYPE BOOM  
YEAR 2007  
POWER DIESEL

**ALL MACHINES IN STOCK - PRICES AVAILABLE ON REQUEST  
CALL NOW FOR OUR BEST DEALS!**



AFI-Resale, Pope Street, Normanton, Wakefield WF6 2RQ T. +44 (0)1924 224 392 F. +44 (0)1924 224 391

Please note photographs are for illustrative purposes only.