



MARCH 4-8, 2014

LAS VEGAS, NEVADA, USA

LAS VEGAS CONVENTION CENTER

OUTDOOR BOOTH : **SILVER LOT 4 - 6445**

www.cndingli.com



ZHEJIANG DINGLI MACHINERY CO.,LTD.

Tel: +86-572-8681688 Fax: +86-572-8681690 market@cndingli.com export@cndingli.com

Add: No.1255 Baiyun South Road, Laidian Town, Deqing Zhejiang China



What's happening in Vegas?

Next month most major crane, access and telehandler manufacturers will be making their way to Conexpo 2014. In total there will be about 2,400 exhibitors attracting more than 125,000 visitors - mainly from North America - to see the latest equipment and take in the sights of Las Vegas.



This year, Conexpo will be the largest construction show with visitors from all over the world. And although there are new exhibition areas - including the Platinum Lot and a Demolition and Recycling Pavilion - it is business as usual for the crane, access and telehandler exhibitors and visitors which are mainly situated in the Gold and Silver Lots. Running from Tuesday 4th until Saturday 8th March there will be some major model launches particularly from the North American manufacturers. Many European companies will be showing equipment unveiled to their home market at Bauma in Germany last April.

It has been three years since the last Conexpo and economically it has been a mixed bag with some countries on the up and others deteriorating badly. Manufacturers that rely for most of their revenues and profits from North American and Northern/Central Europe have definitely recovered - all be it after a rather bumpy ride. Those in Southern Europe and some developing markets have suffered.

As the show approaches it looks like we may now be at the start of a more solid pick-up in the global economy. With this in mind Conexpo looks to be well placed in the economic cycle, however the hardships faced by some means that we will see fewer Italian and French manufacturers than in 2011 and interestingly fewer Chinese exhibitors in the components sector.

Should you go?

There are likely to be a many new product introductions, especially when it comes to crawler and Rough Terrain cranes. With numerous corporate changes - including major management reshuffles, new policies, new chief executives and a growth in global strategies - it will also be a good opportunity to see the latest developments, meet new managements and get a sense of what the future holds. There is also Las Vegas - having suffered badly through the economic crisis, it is now beginning to recover. As a destination you either love it or hate it and given the current inclement weather in many parts of Europe it might be nice to escape to the sun for a few days. Although be warned when the show is this early it can be hit by snow! Unlikely, but it has happened before.

Crane and Access events at the show

A total of 18 crane operators will battle it out for the title of top crane operator in the Crane & Rigging Hot Line & CIC Skills Championship on Thursday and Friday March 6th



and 7th. 16 of the operators qualified from regional heats held last year, while two additional operators will be selected from qualifying rounds on Tuesday and Wednesday March 4th and 5th on stand 2975 in the Gold Lot. Operators can pre-register for the qualifiers on www.craneoperatorrodeo.com. Contestants will use a 220 tonne/265 ton Liebherr LTM 1220-5.2 All-Terrain crane.

The five kilometre charity run or walk will be held on Wednesday March 5th with funds raised going to the Injured Marine Semper Fi Fund that provides financial relief to injured members of the armed forces and their families during hospitalisation and recovery and ongoing needs. The organisers hope to raise at least \$10,000 for the fund and attract 400 participants compared to 250 in 2011. Do join in, not only is it a good way to start the day but it's fun too.

Registration: \$25 before 2/14/2013- \$30 onsite - all participants will receive an event T-shirt

Start Time: 7:00 - arrive early to pick up your shirt

Start point: Below sign for the LVH Hotel & Casino (Formerly the Las Vegas Hilton) 3000 Paradise Road.



The basics

Where: The Las Vegas Convention Centre

When: Tuesday March 4th until Saturday March 8th

Show times: Tuesday through Friday 9:00 till 17:00
Saturday 8th March 9:00 till 15:00

Entrance fee: You will need to buy a ticket either online or at the gate for \$90. This year exhibitors also have to pay the fee as well.

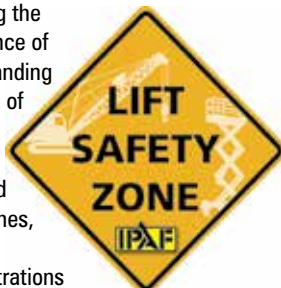
Where to stay: There is plenty of choice. If you register in advance you can book your room on the Conexpo web site at attractive rates. Those wanting to stay close then look at hotels at the Northern end of the Las Vegas Strip.

Getting there: There are direct international flights to Las Vegas from London, Paris, Tokyo, Mexico City, Calgary, Toronto, Frankfurt, Glasgow, Vancouver, Winnipeg, Seoul and Manila. Some of these are chartered flights and may be irregular. The city is well served with internal/domestic flights, so if connecting via another American city, try and pass through a southern airport, especially given the weather that the USA has been experiencing so far this winter. Los Angeles is the most popular with several flights an hour to Las Vegas, which are both cheap and short. Alternatively consider renting a car in LA and driving - it takes around four hours and is for the most part interesting - as long as you have the time.



Lift safety Zone

The National Commission for the Certification of Crane Operators (NCCCO) will host practical and written crane operator certification exams. It is sharing the stand with the International Powered Access Federation (IPAF) which will be stressing the importance of understanding the risks of working near overhead power lines, with demonstrations and educational sessions.



So how do you find your way around?

Well if you are a crane, access or telehandler specialist then all you need is the bi-lingual Vertikal Guide to Conexpo. It is available free of charge in the outside area or you can download a digital version from www.vertikal.net and it is ideal for planning your visit. It contains a full brand listing, large maps of the areas where cranes and access equipment can be found and guided tours for 21 of the key product types taking the shortest route and pointing out the key exhibits along the way. In addition the back pages of the Vertikal

Guide include a full guide to the city and surrounding area. If you have wider interests the Conexpo web site is useful and interactive.

So what can you expect to see?

Being a North American show means more Rough Terrain and crawler cranes, boom trucks and different telehandlers. The following pages highlight the new products you can expect to see, while The Vertikal Guide to Conexpo will be published just before the show opens for those attending. The entire Vertikal team will be on site to report back to those not attending, via Vertikal.net and our twitter feed. There will also be a show review in the March issue of Cranes & Access.

Alphabetical show highlights

Altec

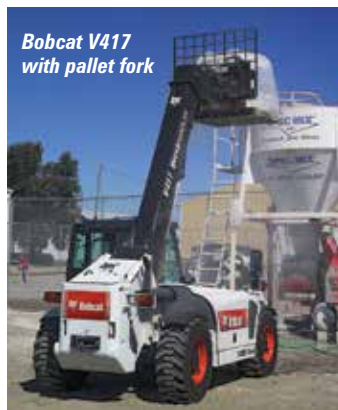
Altec will launch its new 45 ton AC45-127S truck crane/boom truck with all new cab and load management system.

Autec

Remote control manufacturer Autec is launching two new products - the ARX receiver for smaller applications, with two safety outputs that may be used either as a Stop or UMFS (Unintended Movement from Standstill) function, according to the machine needs. While the SOS - Supervised Operator System for work in higher risk applications, such as close to live electrical power lines. Should the operator be endangered, a supervisor may intervene by means of a second transmitting unit that can disable the operator's unit and bring the operator and the machine to safe conditions.

Bobcat

Bobcat will launch the V417 Versahandler telehandler, the first to feature the Bob-Tach attachment mounting system. Weighing less than five tonnes it is just 1.84 metres wide and has a 5.18 metre lift height and two tonne lift capacity.



Bobcat V417 with pallet fork

Custom Equipment/Hy-Brid Lifts

Custom will highlight its 14ft HB-1430 which offers more than six metres working height a 300kg platform capacity and a roll-out deck yet weighs less than a tonne. This is also a chance to see and try its full range of self-propelled and push-around models.

Elliot Equipment

Elliott has several new products including the 41452, a 41 tonne/45-ton boom truck with a 43 metre five-section main boom.



Autec dynamic series



Elliott H110F



Gehl RS10-55 Telescopic Handler

without an additional attachment. Manitou machines on show will include the massive 22.5 tonne/10 metre MHT 10225 telehandler. Three updated MRT 360 degree telehandlers, the MRT1840 Easy 360°, MRT 2150 Privilege Plus and MRT 2540 Privilege Plus. You can also see its 'piggy back truck mounted telescopic forklifts - the Manitou TMT 55 and TMT 55 4-Way.

Gehl/Manitou

Gehl will unveil a new optional lifting hook for its RS telescopic handlers which provides a secure lifting point for transporting suspended loads



Custom Hy-Brid HB-1230



Genie GS-4069
BE Hybrid

Genie

If you missed it at Bauma, this is your chance to see the world's highest self-propelled boom - the 180ft SX-180 now ready for production. The main new product we know of though is the BE69 Bi-Energy/hybrid scissor lift series, topped by the 40ft GS-4069. On the telehandler front the company will show three models including the GTM-1544, making its North America debut.



Haulotte
HT67RTJ

Haulotte

Haulotte will highlight its HT67 RTJ - the North American version of its HT23 RTJ - with a working height of 20.5 metres and 18.3 metres of outreach it has a 450kg platform capacity and rapid lift speed. Also expect to see a good selection from its product range, from its largest boom lifts to smallest scissors and mast booms. And don't miss the Bil-Jax trailer lifts and self-drive platforms.

C&a

Conexpo

HBC-radiomatic

HBC-radiomatic has several new products, including the Radiomatic Photon which gives a clear display of several live camera images simultaneously on the radio controller. Cameras can be placed anywhere on the machine or in the working environment up to a range of 150 metres.

HBC spectrum E



IMT

IMT (Iowa Mold Tooling) will show a number of new and improved loader cranes, including its mid-range articulated cranes based on the HMF 910K series manufactured in Denmark by HMF - including nine, 10, 11 and 12 tonne metre units.



The IMT 9/65 articulated
knuckle boom crane

NYLACAST
ENGINEERING PLASTIC SOLUTIONS

NO NEED TO EXPLORE SO FAR FOR CUSTOM ENGINEERING SOLUTIONS

Custom components and materials with:

- A cost effective alternative to metals
- Exceptional resistance to abrasion and impact
- Self lubrication
- Lightweight - typically 1/7th of steel
- Low coefficient of friction
- Corrosion and chemical resistance



+44 (0)116 276 8558
engineer@nylcast.com
www.nylcast.com

PIONEERS OF THE ORIGINAL
OIL FILLED NYLONS
"Oilon and Nylube"





WHO YOU CALLIN' SMALL?

Hy-Brid low-level scissor lifts might be compact, but they deliver in huge ways. Light weight, yet high capacity. Ample platform space, yet small enough to maneuver into elevators and through doorways. Low stowed heights, yet 20-foot working heights. All resulting in versatility that's needed from start to finish on every job.

Hy-Brid Lifts

1-866-334-0756 | WWW.HYBRIDLIFTS.COM





JCB 525-60 Hi Viz

The company also has upgrades to its electric telescopic cranes for pick-up truck service bodies, including the introduction of a new top of the line 6000 with a maximum capacity of 2,700kg.

IPAF - International Powered Access Federation

With electrocutions the single largest cause of aerial lift operator fatalities in the USA, IPAF is hoping to raise awareness of the risks with a live demonstration at its Lift Safety Zone, which it is once again co-hosting with the National Commission for the Certification of Crane Operators (NCCCO).

JCB

JCB is unveiling the six metre/2.5 tonne 525-60 Hi-Viz, a new compact telehandler which replaces the 524-50, 527-55 and the 520-50 rear-engined models. Overall dimensions are 1.8 metres wide by 1.91 metres high, while the side-engine mount allows a low boom pivot point for maximum stability and increased visibility to the rear and across the boom.

Jekko

Jekko is unveiling its new SPX 1275, its largest crane to date with a 7.5 tonne maximum capacity and 17.7 metre lift height. The outrigger footprint is 4.6 metres square, and gross weight is 8.3 tonnes. Other

cranes included the new 990kg capacity, 6.1 metre lift SPB 209 and 1.2 tonne/7.6 metre SPX 312.

JLG/Lull/SkyTrak

JLG will show its super compact 2.5 tonne/5.5 metre G5-18A telehandler, redesigned last year it offers a stowed height of less than 1.9 metres with 3.35 metres reach. JLG's largest telehandler will also be on show - the 5.4 tonne/16.8 metre G12-55A with its more generously proportioned cab and single joystick control.

On the aerial lift front expect to see a new 45ft articulated boom designed for the rental market, while its RS electric slab scissor lifts will be represented by the 19ft 1932RS and the 32ft 3248RS. JLG Ground Support will show a reconditioned G10 telehandler and 660S boom lift.

JMG

Making its North American debut is Italian pick&carry company JMG, we have no idea what it plans to show.

Kobelco

Kobelco will show three cranes - the 110 ton CK1100G, the 160 ton CK1600G and the 275 ton CK275G - as well as the KCross remote data monitoring system - standard on all G series models - and a G series CK-III service training simulator.



JLG G12-55A



Liebherr 542 HC-L



Liebherr LR 11000

Lampson

American crane manufacturer and rental company Lampson will show its new 230 tonne class 4100 Millennium crawler crane which it says combines the structural integrity and versatility of the Manitowoc 4100 with the safety and ease of operation of the latest hydraulic cranes. The crane can be used with the Manitowoc Ringer attachment increasing maximum capacity to 300 tons

Liebherr

Liebherr will have the 1,000 tonne LR 11000 crawler crane at the centre of its stand, it will also shortly be available with the

PowerBoom system. The main new product launch though is the 542 HC-L 18/36 Litronic luffing jib tower crane which has a maximum capacity of 36 tonnes and is also available in 12/24 or 18/36 tonne versions. The luffing gear has been improved to suit the lifting capacity so that shorter adjusting times are possible. Liebherr has improved the crane's space requirement by changing the position of the jib when not in use, resulting in a reduction of around 2.5 metres to the out-of-service radius. The climbing process has also been improved by using an electronically secured climbing guide section. Sensors on the guide section report

the current climbing status to the Litronic crane controller. Specially adjusted climbing curves based on the recorded data can be provided using the Litronic controller to ensure maximum safety - a real plus for operational safety on site.

Other cranes include the 750 tonne LTM 1750-9.1 and 300 tonne LTM1300-6.2 All Terrains, the latter



Link-Belt ATC-3210

Linden Comansa 16LC185



with its single-engine drive concept, the 220 tonne LTR 1220 telescopic crawler crane, the uprated 250 tonne LR 1250 lattice crawler and 380 EC-B 16 Litronic flat-top tower crane.

Linden Comansa

Linden Comansa will highlight its

new PowerLift system allowing a 10 percent improvement to the load chart with reduced speeds. This system now comes as a standard on all Linden Comansa's flat-top tower cranes. The LC1100 and LC2100 Series have also been updated and improved.



Manitou MHT 10225

Link-Belt

Conexpo is Link-Belt's big show and it is unveiling a new 135 tonne three axle Rough Terrain crane, with a 59.5 metre, six section main boom. The crane also features a three position outrigger system that the company refers to as its Confined Area Lifting Capacity (CALC) feature. The company will also launch the 185 tonne five axle ATC-3210 All-Terrain crane built specifically for the North American market following on from the 250 tonne five axle ATC-3275 that it launched at Conexpo 2011. Other new products include an upgraded version of the RTC-8080 Series II Rough Terrain and a new 45 tonne telescopic crawler, the TCC500 which targets the utility market with a heavy duty a 33.5 metre four section boom.

Maeda

Maeda three MC spider cranes with a new optional auxiliary winch with 100 metres rope storage capacity for work from upper floors of high buildings. A selection of options will also be displayed, including a man basket and new jibs and a remote controlled vacuum glass manipulator. You can also see the LC785M-8 mini crawler crane.

Manitex/Badger/Valla/Little Giant

Boom truck manufacturer Manitex is now a budding international lifting conglomerate, with the new 70 ton Manitex TC700 truck crane with its 55 metre maximum tip height, its largest to date. This will also be the first show following its acquisition of Italian pick&carry crane manufacturer Valla and a chance to see the new Badger compact cab-down Rough Terrains.

Manitowoc/Grove/Potain/National Crane

This year Manitowoc is keeping its major new product launches very close to its chest until the show opens. It is raising expectations though promising bigger new

crawler cranes than you might expect - we will have to wait and see. We do know that it will show the RT540 and the RT770E Rough Terrain cranes, the 300 tonne GMK6300L and the 400 tonne GMK6400 All Terrains. The Potain IGO T130 self-erecting and MR418 luffing jib tower cranes, the Manitowoc MLC165 crawler crane, two National boom trucks - the NBT15 and NBT60 - and the CD5520 Shuttlelift carry-deck crane.

MEC

In addition to its Crossover compact scissors, the company is launching its new 6092RT, a new 60ft scissor lift and the largest scissor lift ever built in North America. It says that it will be priced substantially more competitively than the big scissor lifts from Europe. Also look out for the Titan 60 scissor deck on a boom.

AMS-Merlo

This is the first Conexpo for Merlo with North American distributor AMS - while no new models have been promised you can expect some innovation.

Niftylift

Nifty lift is not promising any new products at the show but its stand will be open of the best stocked with just about every model from its increasingly wide range, sadly it does not expect to have the new HR28 on display, preferring to delay its North American launch until later on.

Oil&Steel

Oil&Steel will unveil its new Octopus EVO 2300 spider lift, topping the Octopus range with a height of 22.8 metres and an outreach of 11.6 metres. The user has a choice of petrol or diesel engines both combined with an electric engine for indoor use.

Palfinger

Palfinger will be showing a range of models including the Palfinger its largest knuckle boom crane to date, the PK 200002 L SH which



Palfinger Pal Pro



Ruthmann 54 metre T175A

will be mounted on a Western Star chassis. The new crane has an nine section polygon shaped boom, which when coupled to a new eight section PJ 300 L jib offers a maximum tip height of nearly 50 metres at which it is said to lift around 600kg. Load moment is in the region of 200 tonne/metres. The company is looking to establish itself in the platform sector and will have its 103 metre P 1000 truck mounted platform as well as the ETI ETC 371H insulated lift with a 42ft working height.

Other products include the 72,000 ft/lb PAL Pro 72, the Palfinger Service Crane (PSC) 6229 with 29ft reach with PRC 60 air compressor. Epsilon forestry and scrap cranes -

including the Q170Z96 and Q150L80 - can also be seen. Rounding off the varied stand is a GT 55 truck mounted forklift and a 50,000lb capacity T50 Hooklift.

PM

PM will highlight its latest articulated loader crane - the PM 150 SP - a compact, lightweight crane with integrated base that makes it easier to install. The crane is available with up to nine hydraulic extensions and jibs with up to six extensions with negative angles of 25 degrees. Maximum horizontal reach is 35m/115 ft.

Reachmaster - Bluelift/TCA /R&B/Denka/ PB/Winlet

Reachmaster is launching several

new products in its biggest Conexpo presence to date. They include the new 18 metre Bluelift B59 spider lift which like its B72 - will be available in three versions including a full lithium battery pack and combo which features both lithium batteries and combustion engine.

From TCA comes the revised version of the Falcon FS105-Z spider lift which features a new remote control system. The company will also show a new Winlet glass and window handler - the Winlet 1310 that can pick&carry and then place a plate of up to 594kg. Also on the stand will be two Mighty Crane mini cranes and scissor platforms from PB Liftechnik.

Time/Ruthmann

Time Versalift now the Ruthmann dealer for the USA will show the 54 metre T175A - (the T540) on a new four axle chassis- for easy nationwide roading.



Palfinger PK200002 L SH

SYRiNX No.1 for Cranes & Powered Access

1050+ companies worldwide successfully use Syrinx®

SPARROW CRANE LIMITED

"Syrinx has certainly brought all of our information together into one database and improved the efficiency of our business from start to finish." Phil Mitchell

KIMBERLY GROUP

"When we were undertaking due diligence on the acquisition of another powered access company, who were already using the Syrinx system, we noted that Syrinx gave them a number of operational and financial functions that we didn't have with our existing system. Kimberly Access are a focused operational business and so this excited us. Syrinx is now set up as our group rental system and Higher Concept Software have exceeded all our expectations in terms of the product and their customer service." Ray Ledger

Rapid PLATFORMS

"Our previous system was fraught with difficulties and not backed up with good service. It was a big decision to contemplate getting a new hire management system but we were so frustrated we had no other option. We were pleasantly surprised at how smooth the implementation of Syrinx was. We have been impressed with the excellent project management and exemplary training backed up by excellent support." Alistair Jordan

Lifterz

"We chose Syrinx because of its stability and reliability - a great improvement on our previous system." Malcolm Bowers

HORIZON PLATFORMS

"Syrinx is easy to use, self explanatory and yet sophisticated." Ben Hirst

Stand MP9

Vertical days
May 14 & 15



SYRiNX

www.higherconcept.co.uk Tel: +44 (0) 118 956 9577



REGISTER NOW TO SEE WHAT'S NEW

Get the ultimate up-close look at the future of lifting.

Registration is now open for the show that offers an immense unveiling of all the newest equipment, technology and product breakthroughs in lifting. Bringing you the latest in everything from capacity and reach to transportability, it's the one show that raises the bar for working smarter.

Register now at www.conexpoconagg.com to save over 30%!



**IF IT'S NEW,
IT'S HERE**

MARCH 4-8, 2014 | LAS VEGAS CONVENTION CENTER | LAS VEGAS, USA





Skyjack
SJ6826RT

Skyjack

Skyjack will unveil the new SJ6832 RTE electric Rough-Terrain scissor lift plus the VR1056 and ZB2044 telehandlers fitted with Tier IV Interim engines. The SJ6832 RTE is built on the same chassis as the existing SJ6832 compact RT models. The new ZB2044 telehandler lifts nine tonnes and has a lift height of 13.7 metres. The VR1056 telehandler - also now Tier IV Interim compliant - with a maximum lift of 4.5 tonnes and a 17.1 metre lift height.

Snorkel/Xtreme

This is the first time the two companies will be sharing a stand since the acquisition and there will be many products on show.

These include two new Xtreme telehandlers - one compact and one ultra heavy duty. The compact 5919 has a maximum lift capacity of 5,990lbs and 19ft lift height. The ultra heavy duty 6538 has a 65,000lb capacity and a 38ft lift height.

Stros

Stros will exhibit a new prototype construction hoist - the NOV 4561 UP F9W - the counterweighted hoist has a capacity of 4.5 tonnes, a car length of 6.1 metres and speed of 90 metres a minute.



Tadano

Tadano will unveil the 145 tonne three axle GR 1600XL-2 Rough Terrain crane. Two units will be



Terex
Superlift 3800

on show - one in transportation mode. Outside of North America it will be known as the GR-1450EX-2. The new crane features a 61 metre, six section main boom with a new rounded profile and single telescopic cylinder. A two part 10.2 to 17.9 metre bi-fold swingaway takes the maximum tip height to 78 metres. The biggest machine on the stand will be the 400 tonne All Terrain ATF 400G-6 and we can expect a new Mantis telescopic crawler crane.

Tracked Lifts/Platform Basket/Omme lift

Tracked lifts will have at least one spider lift from Platform Basket alongside the 27 metre Omme 2700.



The new 42m
Omme hybrid
spider may be
at the show?

Terex Cranes

One of the largest crawler cranes at the show will be the 650 tonne Terex Superlift 3800 - the successor to the CC 2800-1 with its maximum hook height of 190 metres. Also on the stand will be an updated 100 tonne Quadstar 1100 Rough Terrain crane with the latest Terex cab and improvements to access, maintenance and reliability.



Tadano GR1600XL

C&A

Conexpo



Teupen LEO 21GT

Teupen

Teupen is re-naming its LEO spider lifts for the North American market, so the new 21 metre LEO 21GT becomes the TL63A (Tracked Lift 63ft - articulated). The new model features 12 metres outreach 250kg unrestricted platform capacity and a new outrigger system which allows levelling on slopes of up to 30 percent. Teupen will also introduce the 2014 versions of existing LEO models.

XCMG

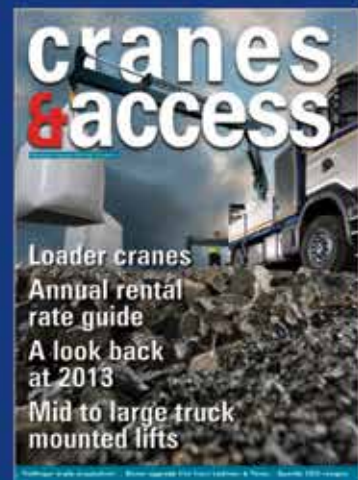
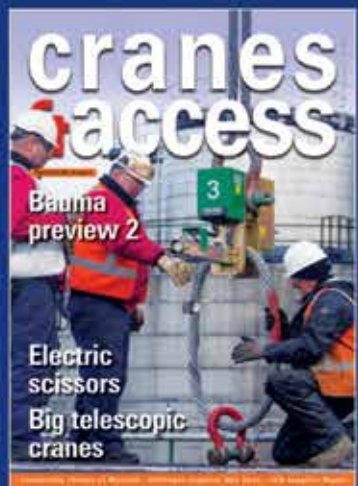
Chinese manufacturer XCMG will show several new cranes specifically designed for the American market. Details are sparse but it may have a 70 ton capacity Rough Terrain with a 43.2 metre main boom and a maximum tip height of around 61 metres.

Zoomlion/Global Cranes

Zoomlion dealer Global Cranes will show six cranes including the new 2014 Zoomlion Rough Terrains, including the 65 ton RT65 with a longer boom, higher maximum tip and significantly better chart than the RT60. Global also says that the RT65 is more than 30 percent less expensive than competitive cranes. Other RTs include the RT 40, RT 80, and RT 110. Zoomlion crawler cranes will include the 110 ton ZCC1100H and the 300 ton QUY260.

For a full list of Conexpo exhibitors in the crane, access and telehandler sectors go to page 51.

Subscribe to



cranes & access

The only way
to guarantee
that you
receive every
issue

Subscription Application Form

Please complete this form and either fax back on
+44 (0) 1295 768223 or +49 (0) 7618 866814 or
post to The Vertical Press, PO Box 6998,
Brackley, NN13 5WY, UK. Tel: +44 (0)8448 155900

Name

Company

Job Title

Telephone

Address

Zip/Postcode

Country

Telefax

Email

Please start my one year subscription to
Cranes & Access at the rate of:

£40.00/€60 (UK and Irish addresses only) ☐

€75.00 (Rest of Europe) ☐

\$110.00 / £60.00 (Other regions) ☐

I enclose a cheque made payable to The Vertical Press ☐

Please invoice me ☐

I enclose an international money order ☐

Please charge to my credit card ☐

Name

Card number

Expiry date

Security code

Vertikal
.net

Subscribe online at www.vertikal.net

So who is exhibiting?

The following is an alphabetical list of all exhibitors that produce products or services that have any relationship to lifting equipment, predominantly cranes, access and telehandlers. More detailed lists by product sector will be found in the Vertikal Conexpo Guide.



C&A

Conexpo

Company **Stand No**

A

3B6	85201
3D Lift Planner	2853
ADB Hoist Rings	70049
Allison Transmissions	85430
Alps Wire Rope	70043
Altec	1827
Altarnamats	61419
AMS Merlo	4200
Ascorel	50963
Associated Wire Rope & Rigging	2852
AEM	20051
Atlas	4054
Ausa	6736
Autec	6773
Auto Crane	6710

B

Badger	2115
Bauer-Pileco	7038
Bauma	20050
BICES	2015 20040
Big Astor	3800
Bil-Jax	1531
BKT Tires	70050
Blue Hat Hoisting	6830
Bluelift	2765
Bobcat	1501
Bonfiglioli Riduttori	80642
Borg Warner	85408
Bosch Rexroth	80216
Braden winch	4048
Brevini Fluid Power	83650
Brevini USA	2971
Bridgestone	13006
Bridgewell Mats	51104
Bridon International	52828
Brodersen	1324
Bucher Hydraulics	82829
BVA Hydraulics	82740

C

Cargotec Kalmar/Hiab	4748
Casagrande	8254
Casar	50040
Caterpillar	1015
Changzhou Aoxuan Slew Ring	508

Company **Stand No**

COBO	85201
Comer Industries	82130
Cometto Industrie	244
Conexpo Russia	20051
Construction Equipment Association	40424
Cormidi	3600
Cranes & Access	1986
Crane & Hoist Canada	1568
Crane and Rigging Hotline	1421
Crane Institute Certification	2975
Crane Institute of America	2973
Cranes Today	6209
Cranesmart Systems	1393
Cranimax	
Crosby	3034
Cummins	84808
Curtiss Wright Controls	83434
Custom Equipment	1725

D

Dakota Fluid Power/ OEM	83344
Dana Holding	85114
Danfoss	80529
Delta Tech Controls	84034
Denka	2765
Deutz	84620
DHS scale models	20012
DICA	63731
Dieci	2175
Dinamic Oil	83640
Dingli	6445
DLH Fluid Power	81818
Donaldson	83940
Doosan Infracore	1501
Double Coin Tire	65401
Dynamic Fluid / PVS Sensors	82818

E

Eaton	80230
Elliott Equipment	1108
Enerpac	3749
EPW	2965
EZ-Scaffold	2977

F

F&M Mafco	65005
Fascan International	2736
Fassi	2736

Company **Stand No**

Faymonville	3611
Furukawa-Unic	3249

G

Gardner Denver	64015
Geda	53090
Gehl	12605
GKD Technik	40424
GKS Lifting and Moving	90527
Goldhofer	2836#
Goodyear	11649
Grove	2137
Gunnebo Johnson	2842

H

Harrington Hoists	70306
Hatz Diesel	83740
Haulotte	1531
HAWE Hydraulics	81215
HBC-radiomatic	52872
Helec	30934
Hetronic	1171
Hiab	4748
Hidromek	3005
Hinowa	see JLG
Hirschmann	2024
Historical Construction Equipment Assoc.	20012
Hitachi Cranes	see Link-Belt
HMF	see IMT
Hoist Liftruck	6515
Honda	3484
HookCam	2674
Hunger Hydraulics	82212
Husco	80916
Husky Equipment	6831
Hydro Mobile	608
HydraForce	80930

I

Ikusi - Cervis	82918
Independent Parts & Service	70156
Industrial Lift and Hoist	1421
Industrial Matting	7354
Intermat 2015	20074
International Truck	62440
IMT	10652
IPAF	1817
Iron Planet	761

Isuzu Motors	7526
J	
JCB	1559
Jekko	1095
JLG	1037
JMG	2309
K	
Kamag Transporttechnik	3905
KHL	3498
Kinshofer	3510
Kobelco Cranes	2129
Kran & Bühne	1986
KTI Hydraulics	81922
Kubota Engines	84608
L	
Lampson International	1392
Landoll Trailers	4248
Layher	6842
Lectura	60110
Ledwell	61409
LHP Telematics	90126
Liebherr	2155
Lift and Access	1421
Lift Systems	1097
Lifting Gear Hire	3345
Lifting Technologies	2979
Linden Comansa	2181
Link-Belt	1747
Little Giant Ladder	130
LSI	2761
Loadrite	50119
Lube-A-Boom	2760
Lull - JLG	1037
M	
Maeda	3211
Magna Tyres	3711
Magnetek	81147
Manitex	2115
Manitou	12605
Manitowoc	2137
Mantis (Tadano)	2101
Marooka	1537
Maximum Capacity Media	1421
MEC	6148
Merlo	4200
Michelin	10378
Mighty Crane	2765
Mustang	12605
N	
NCCCO	1817
NACB	2870
National Crane	2137
Nelson trailer	2374
Nicolas	3905
Niftylift	4118
Nylacast	40527

O	
Oil&Steel	4782
Omme lift	2084
Omni Gear	83534
Operating Engineers Training Institute Ontario	70034
Orlaco	2771
OSHA Training Institute	349
OTR Wheel Engineering	70320
P	
Palfinger	3311
Panolin	8574
Parker Hannifin	80440
PB Lifetechnik	2765
Penny & Giles	83434
Pettibone	3149
Pirtek	8224
Platform Basket	2084
PM	4782
Poclain Hydraulics	80940
Potain	2137
PQ Controls	82021
Prinot	3791
PVE	8023
Q	
Quality Mat	30303
R	
R&B Engineering	2765
Ramsey Industries	6710
Raxtar	608
Rayco-Wylie	2755
ReachMaster	2765
Reel-O-Matic	1888
Rotzler	81419
RUD Chain	70332
Ruthmann	3200
Ryco Hudraulics	82018
S	
SafeWay Hydraulics	82529
SAI Hydraulics	82530
Sany	3516
SAIA	60127
SC&RA	20032
Scanreco	3291
Scheuerle	3905
Sellick	1071
Sennebogen	4264
Service Trucks International	1310
Shandong Tyre	630
Shuttlelift	1395
Skyjack	1837
Sky Trak - JLG	1037
SMIE	8676
Snorkel	4224
Spartan Mats	
Spydercrane	3249

SSAB	30611
Stros	3476
Sumner	50930
Sun Hydraulics	80719
Sunfab	81917
T	
Tadano	2101
Talbert	2474
Taylor	6720
TCA Lift	2765
Tecsys	65017
Tele Radio	760
Terex	1047
Teufelberger	614
Teupen	4581
Time Versalift	3200
Titan Machinery	7051
Titan Tire	11671
Towmaster Trailers	1295
Tracked Lifts	2084
Trail King	1374
Trelleborg	40406
Trimble	11766
Trojan Tire	70015
TVH	40216
U	
Unic	3249
V	
Valla	2115
Versa-Lift	1594
Versalift	3200
Vertikal Press	1986
W	
Wacker Neuson	4452
Winlet	2765
WireCo	50040
Wirerope Works	70209
X	
XL Specialized Trailers	2744
Xtreme	4224
XCMG	1579
Y	
Yanmar Engine	11637
Z	
ZF	85030
Zoomlion	3554

Don't forget to drop by and see us on stand No 1986 to pick up your FREE copy of the Vertical Conexpo guide, containing detailed maps, a fully comprehensive exhibitor listing and much, much more!



Visiting APEX is doing business at the highest level



24 - 25 - 26 JUNE

Amsterdam RAI
Convention Centre



The world's top access equipment event

- Meet the greatest experts face-to-face
- Update yourself about the latest trends
- Compare and select the latest access equipment

Register online for a **FREE** entry:
www.apexshow.com

Sponsored by:

access
INTERNATIONAL

Supported by:

IPAF **khl**

Opening Hours

Tuesday June 24 09.30 - 18.00 h.

Wednesday June 25 09.30 - 18.00 h.

Thursday June 26 09.30 - 17.00 h.

Need more APEX information?
Contact: marleen@ipi-bv.nl