

# The **VertiK**al

## Guide to Conexpo

for buyers and users  
of lifting equipment  
para compradores y usuarios  
de equipos de elevación



**Cranes**  
**Aerial lifts**  
**Telehandlers**

**Grúas**  
**Manipuladores**  
**Telescópicos**  
**Plataformas**

**7th - 11th**  
**March 2017**



[www.vertikal.net](http://www.vertikal.net)



# DESIGNED FOR EVERY DIMENSION



CONEXPO 2017  
Booth G3946 &  
Tech Pavilion

## REDEFINING THE ACCESS INDUSTRY

The worksite of the future calls for smarter machines, safer working conditions, advanced training and greater availability of parts. But it doesn't stop there. We're creating connected technology you've never seen before that will propel the access industry into the future.

Experience the possibilities at CONEXPO 2017.

Preview the event at [www.jlg.com/en/every-dimension](http://www.jlg.com/en/every-dimension)

# JLG®



**Editors:**

Mark Darwin  
Rüdiger Kopf  
Alexander Ochs  
Macarena Garcia

**Advertising & Sales:**

Karlheinz Kopp  
Pam Penny  
Clare Engelke

**Production:**

Nicole Engesser  
Leigh W. Sparrow

**Publisher:**

Leigh W. Sparrow

**The Vertikal Press Ltd:**

PO box 6998 Brackley  
NN13 5WY, UK  
Tel: +44(0)8448 155900  
Fax: +44(0)1295 768223  
E-mail: info@vertikal.net

**Vertikal Verlag:**

Sundgaualle 15, D-79114,  
Freiburg, Germany  
Tel: +49 761 8978660  
Fax: +49 761 8866814  
E-mail: info@vertikal.net

**Design & Artwork by:**

bp design  
Tel: +44 (0) 208 245 5715  
E-mail: studio@bpdesign.info

**Vertikal**  
.net

**cranes & access** **Vertical days**

**KRAN & BÜHNE** **TABS**  
TAG DER ARBEITSSICHERHEIT



How quickly three years pass, it seems hardly yesterday that we were here in Las Vegas for the 2014 show. The market in the Americas was on a strong upswing and the future looked rosy. More recently North America has slowed with the falling oil price hitting the crane market, and larger rental companies holding off capital expenditure. This followed on the tail of a dive in the South American market, with the massive bubble in the Brazilian powerhouse bursting. Could this turn out to be just a prolonged pause for breath? In the US the election campaign caused a good deal of additional uncertainty and friction, and the country now needs to adjust to its new president who could be good for short term business if he moves quickly on promises of infrastructure spending. At the same time forecasts are beginning to suggest that Brazil might bounce back more quickly than many had anticipated.

With all this in mind, this will be a very interesting Conexpo. Do take time to use this guide to your advantage, to plan your visit in order to get the most out of it. New regulations have prompted a rash of new products for the show, with some very interesting technical breakthroughs. It is also a chance to meet industry leaders in what is a massive time of change - sniff the air - is that optimism or gloom?

Have a great show and please do stop by our booth in the Gold Hall and say hi.

**Leigh W Sparrow**



Qué rápido pasan tres años, parece que fue ayer cuando estuvimos aquí en Las Vegas para la feria de 2014. El mercado en las Américas estaba en un fuerte ascenso y el futuro parecía de color de rosa. Recientemente, América del Norte ha experimentado una desaceleración con la caída del precio del petróleo, que ha golpeado al mercado de las grúas, y las compañías de alquiler más grandes se mantienen a la zaga en los gastos de capital. A esto le ha seguido una inmersión en el mercado sudamericano, con una burbuja enorme estallando en Brasil. ¿Podría esto resultar en una prolongada pausa para respirar? En Estados Unidos, la campaña electoral causó mucha incertidumbre y fricción, y el país ahora necesita adaptarse a su nuevo presidente, que podría ser bueno para negocios a corto plazo si se mueve rápidamente en promesas de gasto en infraestructura. Al mismo tiempo, las previsiones están comenzando a sugerir que Brasil podría rebotar más rápidamente de lo que muchos habían previsto.

Con todo esto en mente, esta será un Conexpo muy interesante. Tome su tiempo para utilizar esta guía, para planificar su visita con el fin de obtener el máximo provecho de ella. Los nuevos reglamentos han provocado una serie de nuevos productos para la feria, con algunos avances técnicos muy interesantes. También es una oportunidad para conocer a los líderes de la industria en lo que es un tiempo masivo de cambio y olisquear si lo que viene es optimismo o tristeza. Que tenga una gran feria y por favor pase por nuestro stand en el Gold Hall y salud.

**Leigh W Sparrow**







- ✓ High Performance
- ✓ Low Impact

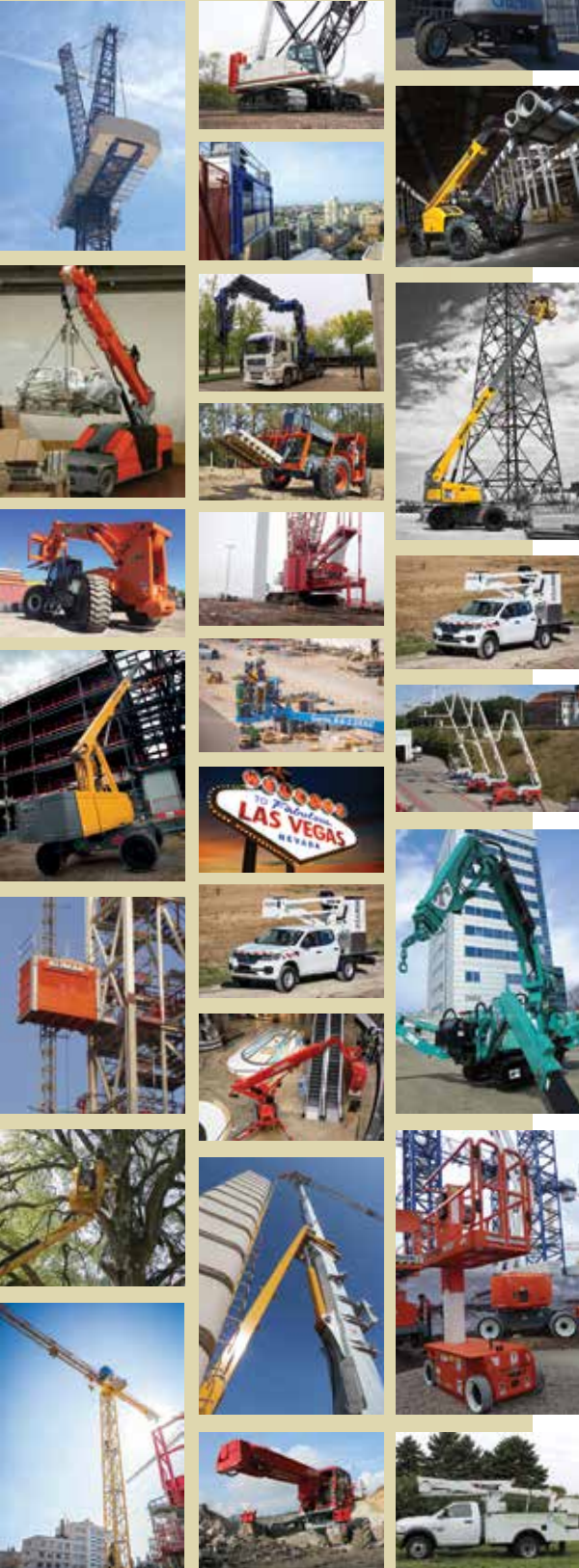


Class leading performance from every model in the range from 9m to 28m.

With award-winning **Hybrid** technology and SiOPS<sup>®</sup> secondary guarding, our machines are *the* safe and efficient choice.

For more information on the Nifty range, or to arrange a free on-site demonstration, please call **+44 (0)1908 223456**, or visit our website.

Call  
**+44 (0)1908 223456**  
to book your free  
demonstration



|           |  |
|-----------|--|
| <b>3</b>  | Introduction • Introducción                                  |
| <b>5</b>  | Contents • Contenido   |
| <b>6</b>  | Exhibition plans • Planos de exhibición                      |
| <b>15</b> | Exhibitor lists • Lista de expositores                       |
| <b>18</b> | All Terrain & Truck cranes • Grúas todo terreno              |
| <b>21</b> | Rough Terrain cranes • Grúas para terrenos accidentados      |
| <b>22</b> | Crawler cranes • Grúas de celosía                            |
| <b>25</b> | Boom trucks & loader cranes • Grúas hidráulicas sobre camion |
| <b>27</b> | Tower cranes • Grúas torre                                   |
| <b>29</b> | Spider cranes • Grúa Araña                                   |
| <b>30</b> | IPAF • IPAF  |
| <b>33</b> | Self-propelled booms • Plataformas autopropulsadas           |
| <b>37</b> | Scissor lifts • Plataformas de tijera                        |
| <b>39</b> | Spider & trailer lifts • Elevadores de araña y remolcables   |
| <b>41</b> | Truck mounted lifts • Plataformas sobre camión               |
| <b>43</b> | Mastclimbers • Plataformas de mástil                         |
| <b>45</b> | Telehandlers • Manipuladores telescópicos                    |
| <b>49</b> | Remote controls • Control remoto                             |
| <b>51</b> | Components • Componentes                                     |
| <b>52</b> | Getting around Las Vegas • Moverse por Las Vegas             |
| <b>54</b> | Las Vegas Monorail Map • Mapa Las Vegas                      |
| <b>55</b> | Sights of Las Vegas • Puntos de interés de Las Vegas         |
| <b>56</b> | Restaurants • Restaurantes                                   |
| <b>58</b> | It's not Gambling • Se trata de jugar                        |
| <b>59</b> | Las Vegas Shows • Espectáculos                               |
| <b>60</b> | Trips further afield • Más Allá                              |
| <b>61</b> | Time for Golf • Campos de golf                               |
| <b>62</b> | Marketplace  |



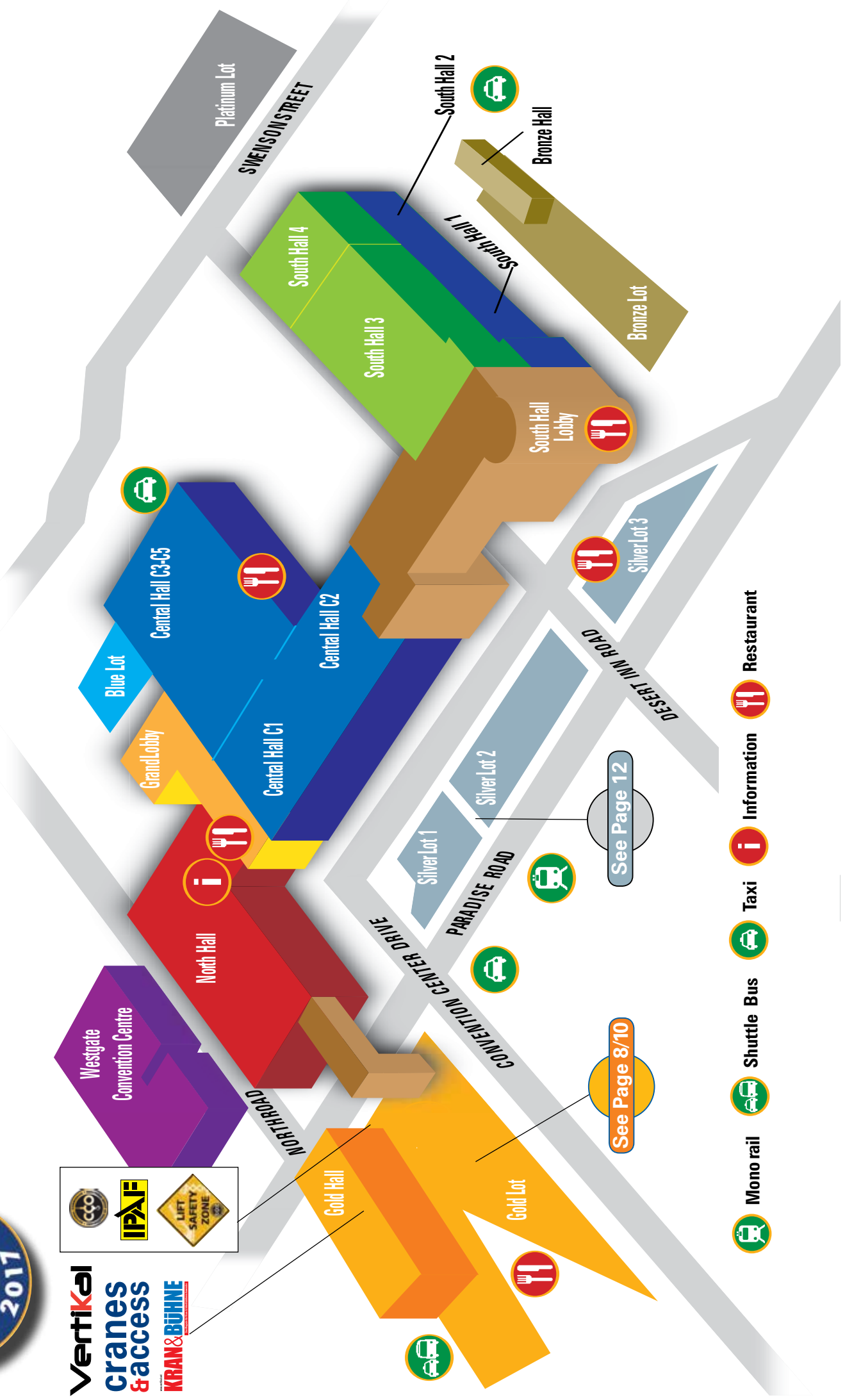


# CONEXPO-CON/AGG overview map

MARCH 7 - 11 2017 • TUESDAY - FRIDAY: 9:00 - 17:00 SATURDAY: 9:00 - 15:00



**Vertical**  
**cranes & access**  
**KRAN & BÜHNE**



See Page 12

See Page 8/10

-  Restaurant
-  Information
-  Taxi
-  Shuttle Bus
-  Mono rail



**Haulotte**   
GROUP



Visit us at Conexpo  
March 7-11, 2017

GOLD LOT - BOOTH

**G-3155**

**GLOBAL SOLUTIONS** FOR YOUR BUSINESS

**Haulotte**   
GROUP

HAULOTTE GROUP - La Péronnière, 42152 L'Horme, France  
Tel. : +33 (0)4 77 29 24 24 - Fax : +33 (0)4 77 29 43 95

[www.haulotte.com](http://www.haulotte.com)



# Gold Lot

PART 1

## GOLD HALL

G70000  
G70002  
G70004

G1000  
**XCMG**

G1205  
**Sunward**

G1404  
**OLKO**

G1012  
**Time**

G1112  
**Lift Systems**

G1113  
**MST**

G1319  
**Hydro Mobile**

G1412  
**Zero Emission**

G1514  
**National Trench Safety**

G1018  
**Magni**

G1118  
**Menzi**

G1119  
**EFFER**

G1319  
**Hydro Mobile**

G1418  
**STROS**

G1522  
**Shurtleift**

G1026  
**AMS-Merlo**

G1128  
**Coble Trailers**

G1127  
**ENERPAC**

G1326  
**FAIRBANKS**

G1428  
**PowerBully**

G1528  
**Rhino Equipment**

G1122  
**Tobacco Giant**

G1123  
**TMC**

G1422  
**Versa-Lift**

G1323  
**Hydro Mobile**

G1422  
**Versa-Lift**

G1522  
**Shurtleift**

G1614  
**Humdingar**

G1716  
**Terramac**

G1817  
**Coneqtac**

G2016  
**Teupen**

G2116  
**China Chamber of Commerce**

G2217  
**Rototilt**

G2416  
**XL Specialized Trailers**

G2616  
**REMU**

G2816  
**K-Tec Earthmovers**

G1027  
**AMS-Merlo**

G1128  
**Coble Trailers**

G1127  
**ENERPAC**

G1326  
**FAIRBANKS**

G1428  
**PowerBully**

G1528  
**Rhino Equipment**

G1622  
**Doka**

G1723  
**SCHUEERLE**

G1825  
**Alimak Hek**

G2022  
**Wolffkrän**

G2126  
**Plaisance Equipments**

G2223  
**Swaploader**

G2422  
**Kohyn Shear**

G2622  
**ESAB Welding Cutting**

G2826  
**Magna Tyres**

G2926  
**Engcon**

G1027  
**AMS-Merlo**

G1128  
**Coble Trailers**

G1127  
**ENERPAC**

G1326  
**FAIRBANKS**

G1428  
**PowerBully**

G1528  
**Rhino Equipment**

G1628  
**Avant Tecno**

G1831  
**Dura Tech Industries**

G2030  
**AMS Promove**

G2130  
**Dromone Engineering**

G2225  
**EFCO Corp**

G2431  
**Posidon Barge Corporation**

G2626  
**Nelson**

G2826  
**Magna Tyres**

G2926  
**Engcon**

G2926  
**Engcon**

Continued below

## GOLD HALL

**Vertikal**  
**cranes & access**  
**KRAN & BÜHNE**

Stand No 73414

G4301  
**IPAF NCCCO**

G4200  
**ACM**

G4206  
**Wolfe**

G4308  
**Royal Truck**

G4314  
**Brigstone**

G4315  
**To ku**

G4408  
**Dieci**

G4316  
**Goldhofer**

G4324  
**Broderson**

G4017  
**Maeda**

G4023  
**PRINOTH**

G4027  
**Sennebogen**

G3925  
**West-Mark**

G3931  
**MEC**

G4308  
**Royal Truck**

G4314  
**Brigstone**

G4315  
**To ku**

G4408  
**Dieci**

G4316  
**Goldhofer**

G4324  
**Broderson**

G4017  
**Maeda**

G4023  
**PRINOTH**

G4027  
**Sennebogen**

G3925  
**West-Mark**

G3931  
**MEC**

- GOLD LOT KEY**
- ACCESS
  - CRANES
  - TELEHANDLERS
  - COMPONENTS
  - PUBLICATIONS & ASSOCIATIONS



G3017  
**Weber**

G3117  
**Hidromek**

G3316  
**Mobile Track Solutions**

G3516  
**Xtreme Manufacturing/Snorkel**

G3716  
**En Site**

G3717  
**Spydercrane**

G3925  
**West-Mark**

G3931  
**MEC**

G3931  
**MEC**

G3925  
**West-Mark**

G3925  
**West-Mark**

G3925  
**West-Mark**

G3925  
**West-Mark**

G3925  
**West-Mark**

G3925  
**West-Mark**

G3023  
**Hydrema**

G3125  
**Brutas Track Bodies/Next Hydraulics**

G3129  
**Anderson Hydro**

G3322  
**LiuGong**

G3722  
**Fascan International/ Fassi Gru/Jekko USA/JMG USA**

G3827  
**Hy-Brid Lifts**

G3923  
**Bron**

G3931  
**MEC**

G3931  
**MEC**

G3931  
**MEC**

G3931  
**MEC**

G3931  
**MEC**

G3931  
**MEC**

G3931  
**MEC**

G3931  
**MEC**

G3931  
**MEC**

G3931  
**MEC**

G3931  
**MEC**

G3931  
**MEC**

G3931  
**MEC**

G326  
**Engcon**

G3131  
**Talbert**

G3129  
**Anderson Hydro**

G3322  
**LiuGong**

G3722  
**Fascan International/ Fassi Gru/Jekko USA/JMG USA**

G3827  
**Hy-Brid Lifts**

G3923  
**Bron**

G3931  
**MEC**

G3931  
**MEC**

G3931  
**MEC**

G3931  
**MEC**

G3931  
**MEC**

G3931  
**MEC**

G3931  
**MEC**

G3931  
**MEC**

G3931  
**MEC**

G3931  
**MEC**

G3931  
**MEC**

G3931  
**MEC**

G3931  
**MEC**

Springhill Suites

Continued on page 10



# Above. Ahead. Always.



SEE US AT  
CONEXPO 2017  
GOLD LOT 3382

Demag is dedicated to helping you keep your business above the competition with innovative crane solutions that are ready for the future.

**Above. Ahead. Always.**

See how that dedication shines through in our new 5-axle family at [www.demag5axle.com](http://www.demag5axle.com)

**DEMAG**<sup>®</sup>  
BY TEREX

# Gold Lot

## PART 2

### GOLD LOT KEY

- ACCESS
- CRANES
- TELEHANDLERS
- COMPONENTS
- PUBLICATIONS & ASSOCIATIONS

G3436 **Atlas**

G4444 **Palfinger**

G4537 **SmithCo Side-Dump Trailers**

G4547 **Kinshofer**

G4837 **Liebherr**

G4452 **Skyjack**

G4864 **Altec**

G4876 **Doosan**

G4137 **Tadano**

G4155 **Kobelco Cranes**

G4165 **Manitou Dragon**

G4177 **Gradall**

G4183 **Komatsu**

G3946 **JLG**

G3984 **Trail King**

G3749 **ALLU**

G3757 **Elliott**

G3435 **Wacker Neuson**

G3346 **Manitowoc Cranes**

G3764 **Trevi Bemme**

G3768 **Fecon**

G3776 **McLellan Equipment**

G3864 **Link-Belt**

G3978 **Tesmec**

G3982 **Maintainer**

G3986 **Next Stellar Hydrations**

G3987 **Terex Trucks**

G3988 **Spydercrane**

G3990 **SDLG**

G3984 **Volvo Construction Equipment North America**

G3243 **Bell**

G3346 **Manitowoc Cranes**

G3776 **McLellan Equipment**

G3364 **JCB**

G3362 **Terex**

G3151 **Tigercat**

G3155 **Haulotte**

UB G3160

G2877 **SANY**

G3083 **LBX**

G2883 **Morooka USA**

G2788 **Linden Comansa**

G2793 **Zoomlion**

G2794 **Reachmaster Ruthmann**

G2790 **Bailey Specialty Cranes and Aerials**

G2695 **Alliance Tire**





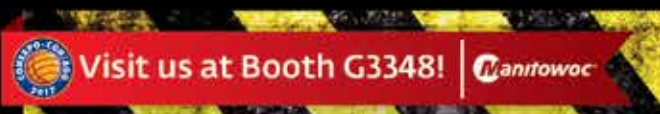
**GROVE**<sup>®</sup>  
by **Manitowoc**

# INCREASE YOUR PROFITS WITH PERFORMANCE

## Rough terrain versatility with superior lift capacity.

The new GRT8100 offers leading performance features that include:

- Best load charts in its class
- Superior gradeability and braking for handling the toughest terrain
- New intuitive and user-friendly Crane Control System (CCS) shares common parts across Grove, Manitowoc and Potain product lines for optimum operator experience and serviceability



Take power, performance and maneuverability to new heights. Learn more at your local Grove dealer today, or go to [www.manitowoc.com](http://www.manitowoc.com)

**GRT8100**  
strongest rough terrain crane with the best capacity and boom length in its class



**UP TO 14%\***  
HIGHER CAPACITY THAN LEADING COMPETITOR

Class-leading 100 USt (90 t) capacity

39.2 ft - 154.3 ft (12 m - 47 m), five-section, full-power hydraulic boom with three operating modes

Optional manual and hydraulic boom extensions, insert and heavy-duty boom extension for job site versatility

22,000 lb (9979 kg) standard counterweight with hydraulic installation and removal system

Boom insert erection and stowage system to reduce set-up and tear down times by 60%

CCS with graphic display and jog dial

\*Dependant on counterweight configuration.

# SILVER LOTS 1 and 2



|   |  |  |   |                                     |                                  |                     |
|---|--|--|---|-------------------------------------|----------------------------------|---------------------|
| S5007<br><b>Maximus</b>                     | <i>Vibra-Ram</i>                           | Am<br>Cast                                     | Geoprobe<br>Systems                     | S5511<br>Shuttlewagon               | S5610<br>SIP & T                 | S5710<br>US Radar   |
| S5014<br><b>McCloskey</b>                   | S5211<br><b>MB</b>                         | S5414<br><b>CZM</b>                            | S5614<br><b>Paladin</b>                 | S5420<br><b>BAUER-Pileco</b>        | S5818<br><b>Fairbanks Scales</b> | S5922<br><b>KHL</b> |
| S5028<br>V.T.N.                             | S5128<br><b>Sandvik</b>                    | S5428<br><b>Asphalt Drum Mixers</b>            | S5628<br><b>American Augers/Trencor</b> | S5827<br><b>Speed Shore</b>         |                                  |                     |
| S5032<br>Primrose Shoring                   | Raimondi Cranes                            | S5432<br><b>Bay Shore Systems</b>              | S5533<br>Stanton Tire                   | S5832<br><b>Haver &amp; Boecker</b> |                                  |                     |
| S5034<br>Dakota                             | JMG Cranes                                 | S5438<br><b>CDE Global</b>                     | S5638<br><b>Landoll</b>                 | S5842<br>PRO-DIG                    |                                  |                     |
| S5036<br>ROC                                | S5144<br><b>ICE</b>                        | S5454<br><b>Edge Innovate</b>                  | S5649<br><b>Hammer &amp; Steel</b>      | S5846<br><b>Simex</b>               |                                  |                     |
| S5044<br>Arrowhead Rockfall                 | S5045<br>WORD International                | S5554<br><b>Flexco</b>                         | S5849<br><b>Bagela</b>                  | S5848<br>Bergkamp                   |                                  |                     |
| S5050<br>Hi-Vac                             | S5051<br>TJM Drilling Equipment & Supplies | S5554<br><b>Flexco</b>                         | S5853<br><b>Mauldin Paving Products</b> | S5852<br>McElroy                    |                                  |                     |
| S5051<br>Kelly Tractor Company              | S5057<br><b>RUBBLE MASTER</b>              | S5560<br><b>Portafill</b>                      | S5861<br><b>Asphalt Zipper</b>          |                                     |                                  |                     |
| S5060<br>Paco                               | S5151<br>Birmingham                        | S5251<br><b>Spiradrill</b>                     | S5865<br><b>Broce</b>                   |                                     |                                  |                     |
| S5065<br>Saskatchewan                       | S5159<br>Birmingham                        | S5259<br><b>American Piledriving Equipment</b> | S5871<br><b>MobyDick Wheelwashing</b>   |                                     |                                  |                     |
| S5066<br>Arrow                              | S5171<br><b>Jinnings</b>                   | S5464<br><b>Ammann</b>                         | S5877<br><b>MobyDick Wheelwashing</b>   |                                     |                                  |                     |
| S5172<br>HPM Hydraulic Performance Machines | S5272<br><b>Casagrande</b>                 | S5664<br><b>PVE</b>                            | S5883<br><b>King Kong Tools</b>         |                                     |                                  |                     |
| S5176<br>Junttan                            | S5182<br><b>PTC</b>                        | S5670<br>Innovative Equipment                  | S5887<br><b>Wheelwash</b>               |                                     |                                  |                     |
| S5182<br>Reliable Asphalt Products          | S5183<br><b>CMI Roadbuilding</b>           | S5671<br>Striker                               | S5888<br><b>General Kinematics</b>      |                                     |                                  |                     |
| S5193<br>Lake Erie Portable Screeners       | S5292<br><b>MAIT</b>                       | S5474<br><b>Rayco Manufacturing</b>            |   |                                     |                                  |                     |
|   |  | S5574<br><b>Diamond Z/Rule Steel</b>           |   |                                     |                                  |                     |
|   |  | S5674<br>Rotar                                 |   |                                     |                                  |                     |
|   |  | S5675<br>HAMMEL                                |   |                                     |                                  |                     |
|   |  | S5678<br>Jean Lutz                             |   |                                     |                                  |                     |
|   |  | S5775<br><b>Bandit</b>                         |   |                                     |                                  |                     |
|   |  | S5482<br><b>Rotochopper</b>                    |   |                                     |                                  |                     |
|   |  | S5582<br>Komplet                               |   |                                     |                                  |                     |
|   |  | S5682<br><b>Morbark</b>                        |   |                                     |                                  |                     |
|   |  | S5488<br><b>Komptech</b>                       |   |                                     |                                  |                     |
|   |  | S5589<br>OSA Demolition Equipment              |   |                                     |                                  |                     |
|   |  | S5688<br><b>CW MachineWorx</b>                 |   |                                     |                                  |                     |

**SILVER LOT KEY**

- ACCESS
- CRANES
- TELEHANDLERS
- COMPONENTS
- ASSOCIATIONS & TRAINING



# KLUBB, VAN MOUNTED AERIAL PLATFORM SPECIALIST

K42P > 15 m



K38P > 14 m



Visit us at  
**CONEXPO 2017**  
March 7-11, Las Vegas  
@ Stand #G4322  
(Gold Lot - Outdoor areas)  
**SEEKING DEALERS**

K32 > 13 m



K26 > 12 m



K21 > 9 m



## INNOVATION AT ITS HIGHEST LEVEL

**KLUBB aerial platforms combine reliability, performance and innovation.**

The current KLUBB range consists of five platforms, with working heights ranging from 9 to 15 metres. The range is compatible with most van types and models.

Our design team of seven full-time engineers draws on the strength of 15 years' experience in the aerial platform market. They have developed the KLUBB range by listening to customers and providing them with products that excel at working at height.

With our commitment to providing the highest standards of customer care, our clients benefit from the very best after-sales support worldwide.

**We want to expand our growing network of professional dealers.** If you believe that you can offer the high standards expected of the world's finest van-mounted platform dealer network then we would like to hear from you. Professionalism, reliability and a passion for customer service are all prerequisites.

**Contact us:**

Tel : +33.1.60.95.12.47

Email : [contact@klubb.com](mailto:contact@klubb.com)

Website: [www.klubb.com](http://www.klubb.com)



**GREEN PACK  
TECHNOLOGY**

# KLUBB

[www.klubb.com](http://www.klubb.com)



# DESIGNED

WITH THE JOBSITE IN MIND



**NOT YOUR TYPICAL SCISSOR LIFT.**



LIGHTWEIGHT



CONSTRUCTION READY



COMPACT



HEAVY DUTY

**HY-BRID LIFTS**  
BY CUSTOM EQUIPMENT INC.

FOR MORE INFORMATION CONTACT US TODAY 262-644-1300 // [WWW.HYBRIDLIFTS.COM](http://WWW.HYBRIDLIFTS.COM)



|  | STAND | HALL/LOT |
|--|-------|----------|
| <b>Self-propelled Booms<br/>Plataformas autopropulsadas</b>            |       |          |
| Bil-Jax  | 3155  | Gold     |
| Dinolift   | 3831  | Gold     |
| Genie  | 3382  | Gold     |
| Haulotte   | 3155  | Gold     |
| JCB  | 3364  | Gold     |
| JLG  | 3946  | Gold     |
| Manitou  | 4165  | Gold     |
| MEC  | 3931  | Gold     |
| PB Liftechnik  | 3831  | Gold     |
| Reachmaster  | 3831  | Gold     |
| Skyjack  | 4452  | Gold     |
| Snorkel  | 3516  | Gold     |
| Tadano   | 4137  | Gold     |
| XCMG   | 1000  | Gold     |
| <b>Mast Booms • Elevadores de Mástil</b>                               |       |          |
| Genie  | 3382  | Gold     |
| Haulotte   | 3155  | Gold     |
| JLG  | 3946  | Gold     |
| Manitou  | 4165  | Gold     |
| PB Liftechnik  | 3831  | Gold     |
| Snorkel  | 3516  | Gold     |
| <b>Push Around lifts<br/>Elevadores de empuje manual</b>               |       |          |
| Custom   | 3827  | Gold     |
| Genie  | 3382  | Gold     |
| Haulotte   | 3155  | Gold     |
| JLG  | 3946  | Gold     |
| Reechcraft   | 71013 | Gold H   |
| Snorkel/Pop Up   | 3516  | Gold     |
| <b>Scissor Lifts • Plataformas de Tijera</b>                           |       |          |
| Almac  | 3831  | Gold     |
| Custom   | 3827  | Gold     |
| Genie  | 3382  | Gold     |
| Haulotte   | 3155  | Gold     |
| JCB  | 3364  | Gold     |
| JLG  | 3946  | Gold     |
| Manitou  | 4165  | Gold     |
| MEC  | 3931  | Gold     |
| PB Liftechnik  | 3831  | Gold     |
| Reachmaster  | 3831  | Gold     |
| Skyjack  | 4452  | Gold     |
| Snorkel  | 3516  | Gold     |
| Tadano   | 4137  | Gold     |
| XCMG   | 1000  | Gold     |
| <b>Spider and Trailer lifts<br/>Plataformas de Araña y remolcables</b> |       |          |
| Bluelift/Ruthmann  | 3831  | Gold     |
| Cormidi  | 2229  | Gold     |
| CTE-Effer  | 1119  | Gold     |
| Denka  | 3831  | Gold     |
| Genie  | 3382  | Gold     |
| Haulotte   | 3155  | Gold     |
| Hinowa (badged JLG)  | 3946  | Gold     |
| Jekko  | 3722  | Gold     |
| JLG  | 3946  | Gold     |
| Oil & Steel  | 4464  | Gold     |
| Palfinger  | 4444  | Gold     |
| Reachmaster  | 3831  | Gold     |
| Snorkel  | 3516  | Gold     |
| TCA (Falck Schmidt)  | 3831  | Gold     |
| Teupen   | 2016  | Gold     |
| <b>Truck mounted lifts<br/>Plataformas sobre camión</b>                |       |          |
| Australian Crane & Machinery   | 4200  | Gold     |
| Altec  | 4864  | Gold     |
| Anderson Hydra Platforms   | 3129  | Gold     |
| Condor Time  | 1012  | Gold     |
| CTE-Effer  | 1119  | Gold     |
| Elliott Equipment  | 3757  | Gold     |
| Klubb  | 4322  | Gold     |
| Manitex  | 4464  | Gold     |
| Palfinger  | 4444  | Gold     |
| Ruthmann   | 2794  | Gold     |
| Terex Utilities  | 3382  | Gold     |

|  | STAND | HALL/LOT |
|--|-------|----------|
| Time Manufacturing   | 1012  | Gold     |
| Versalift  | 1012  | Gold     |
| <b>Mastclimbers &amp; Hoists<br/>Plataformas de mástil</b>       |       |          |
| Alimak Hek   | 1825  | Gold     |
| Böcker (Centry Elevators)  | 71202 | Gold H   |
| Centry Elevators   | 71202 | Gold H   |
| Geda   | 2522  | Gold     |
| Hydro Mobile   | 1319  | Gold     |
| Pega Hoist   | 71202 | Gold H   |
| Raxtar   | 1319  | Gold     |
| Reechcraft   | 71013 | Gold H   |
| Stros  | 1418  | Gold     |
| <b>All Terrain/Truck Cranes<br/>Grúas todo terreno</b>           |       |          |
| Altec  | 4864  | Gold     |
| Demag  | 3382  | Gold     |
| Elliott  | 3757  | Gold     |
| Grove  | 3348  | Gold     |
| Liebherr   | 4637  | Gold     |
| Link-Belt  | 3864  | Gold     |
| Manitex  | 4464  | Gold     |
| Manitowoc  | 3348  | Gold     |
| National Crane   | 3348  | Gold     |
| Sany   | 2877  | Gold     |
| Sennebogen   | 4027  | Gold     |
| Tadano   | 4137  | Gold     |
| Terex  | 3382  | Gold     |
| XCMG   | 1000  | Gold     |
| Zoomlion   | 2793  | Gold     |
| <b>Crawler Cranes • Grúas de celosía</b>                         |       |          |
| Bauer  | 5420  | Silver 2 |
| Casagrande   | 5272  | Silver   |
| Demag  | 3382  | Gold     |
| Enteco   | 5171  | Silver   |
| Grove  | 3348  | Gold     |
| Hitachi (Link Belt)  | 3864  | Gold     |
| Jekko  | 3722  | Gold     |
| Kobelco  | 4155  | Gold     |
| Lampson  | 73223 | Gold H   |
| Liebherr   | 4637  | Gold     |
| Link-Belt  | 3864  | Gold     |
| LiuGong  | 3322  | Gold     |
| Maeda  | 4017  | Gold     |
| Mait   | 5292  | Silver 2 |
| Manitex  | 4464  | Gold     |
| Manitowoc  | 3348  | Gold     |
| Mantis   | 4137  | Gold     |
| Sany   | 2877  | Gold     |
| Sennebogen   | 4027  | Gold     |
| Soilmec  | 5165  | Silver   |
| Sunward  | 1205  | Gold     |
| Tadano   | 4137  | Gold     |
| Terex  | 3382  | Gold     |
| XCMG   | 1000  | Gold     |
| Zoomlion   | 2793  | Gold     |
| <b>Pick &amp; Carry Cranes • Grúas Pick &amp; Carry</b>          |       |          |
| Broderson  | 4324  | Gold     |
| Galizia  | 3831  | Gold     |
| Grove  | 3348  | Gold     |
| Horyong (ZEE)  | 1412  | Gold     |
| Jekko  | 3722  | Gold     |
| JMG  | 5037  | Silver 2 |
| Manitex  | 4464  | Gold     |
| Ormig  | 4308  | Gold     |
| Reachmaster  | 3831  | Gold     |
| Shuttlelift  | 3348  | Gold     |
| SkidCrane  | 2529  | Gold     |
| Valla  | 4464  | Gold     |
| Zero Emission Equipment  | 1412  | Gold     |
| <b>Rough Terrain Cranes<br/>Grúas para terrenos accidentados</b> |       |          |
| Badger   | 4464  | Gold     |
| Grove  | 3348  | Gold     |
| Kobelco  | 4155  | Gold     |
| Liebherr   | 4637  | Gold     |

|  | STAND     | HALL/LOT |
|--|-----------|----------|
| Link-Belt  | 3864      | Gold     |
| Manitex  | 4464      | Gold     |
| Manitowoc  | 3348      | Gold     |
| Sany   | 2877      | Gold     |
| Sunward  | 1205      | Gold     |
| Tadano   | 4137      | Gold     |
| Terex  | 3382      | Gold     |
| XCMG   | 1000      | Gold     |
| Zoomlion   | 2793      | Gold     |
| <b>Spider Cranes • Grúa Araña</b>                      |           |          |
| Cormidi  | 2229      | Gold     |
| Jekko  | 3722      | Gold     |
| Maeda  | 4017      | Gold     |
| Spydercrane  | 3713/3886 | Gold     |
| Unic   | 3713/3886 | Gold     |
| <b>Tower Cranes • Grúas Torre</b>                      |           |          |
| Comansa  | 2789      | Gold     |
| CTS-Jaso   | 1926      | Gold     |
| Jaso   | 1926      | Gold     |
| Liebherr   | 4637      | Gold     |
| Linden Comansa   | 2789      | Gold     |
| Manitowoc  | 3348      | Gold     |
| Potain   | 3348      | Gold     |
| Raimondi   | 5035      | Silver   |
| Terex  | 3382      | Gold     |
| Wolffkran  | 2022      | Gold     |
| XCMG   | 1000      | Gold     |
| Zoomlion   | 2793      | Gold     |
| <b>Loader Cranes/Boom trucks<br/>Grúas remolcables</b> |           |          |
| Atlas  | 4436      | Gold     |
| Auto Crane   | 64207     | South    |
| Cobra  | 4082      | Gold     |
| Cormach  | 1220      | Gold     |
| Effer  | 1119      | Gold     |
| Fascan   | 3722      | Gold     |
| Fassi  | 3722      | Gold     |
| Furukawa   | 3713/3886 | Gold     |
| HMF (IMT)  | 10625     | North    |
| Iowa Mold Tooling                                      | 10625     | North    |
| Manitex  | 4464      | Gold     |
| National Crane   | 3348      | Gold     |
| Next Hydraulics  | 4082      | Gold     |
| Palfinger  | 4444      | Gold     |
| PM   | 4464      | Gold     |
| Tadano   | 4137      | Gold     |
| Unic   | 3713/3886 | Gold     |
| <b>Telehandlers • Manipuladores Telescópicos</b>       |           |          |
| AMS-Merlo  | 1026      | Gold     |
| Ausa   | 2331      | Gold     |
| Bobcat   | 4876      | Gold     |
| Caterpillar  | 4490      | Gold     |
| Dieci  | 4408      | Gold     |
| Doosan   | 4876      | Gold     |
| Faresin  | 4016      | Gold     |
| Gehl   | 4165      | Gold     |
| Genie  | 3382      | Gold     |
| Haulotte   | 3155      | Gold     |
| JCB  | 3364      | Gold     |
| JLG  | 3946      | Gold     |
| Liebherr   | 4637      | Gold     |
| Lift Systems   | 1112      | Gold     |
| Liftking   | 4210      | Gold     |
| Magni  | 1018      | Gold     |
| Manitex  | 4464      | Gold     |
| Manitou  | 4165      | Gold     |
| Merlo  | 1026      | Gold     |
| Mustang  | 4165      | Gold     |
| Pettibone  | 11541     | North    |
| Sennebogen   | 4027      | Gold     |
| Skyjack  | 4452      | Gold     |
| SkyTrak  | 3946      | Gold     |
| Sunward  | 1205      | Gold     |
| Terex  | 3382      | Gold     |
| Tobroco-Giant  | 1122      | Gold     |
| Wacker Neuson  | 3435      | Gold     |
| Xtreme   | 3516      | Gold     |

# Point of Rental

Software

Now with new pricing options.



Custom Reports  
Top Level Security  
GPS Integration  
Completely Paperless



RFID Integration  
Mobile Workforce  
Dispatch Routing  
Streamlined Processes



Online Bookings  
Loyalty Rewards  
Customer Portals  
24/7 Support

The best rental software at prices that work for you.  
**Why settle for less?**

Visit us at ConExpo  
Booth #S61706

[www.PointofRental.com](http://www.PointofRental.com)



# LIST OF EXHIBITORS ■ LISTA DE EXPOSITORES

| Trailers • Remolques |          |          |
|----------------------|----------|----------|
| STAND                | HALL/LOT |          |
| Cometto              | 244      | Hotel    |
| Faymonville          | 3510     | Silver 1 |
| Goldhofer            | 2836     | Gold     |
| Kamag                | 3905     | Silver 3 |
| Landoll trailers     | 4248     | Silver 1 |
| Ledwell              | 61409    | South    |
| Load King            | 2155     | Gold     |
| Nelson trailer       | 2374     | Gold     |
| Nicolas Industrie.   | 3905     | Silver 1 |
| Scheuerle            | 3905     | silver 1 |
| Talbert              | 2474     | Gold     |
| XL trailers          | 2744     | Gold     |

| Remote Controls • Control Remoto |          |        |
|----------------------------------|----------|--------|
| STAND                            | HALL/LOT |        |
| Autec                            | 13380    | North  |
| HBC-radiomatic                   | 13324    | North  |
| Hetronic                         | 9205     | Bronze |
| Ikusi                            | 83709    | South  |
| Scanreco                         | 73103    | Gold H |
| Tele Radio                       | 92521    | Bronze |

| Electronics & Safety • Electrónica & Seguridad |          |         |
|--|----------|---------|
| STAND  | HALL/LOT |         |
| APEM   | 83145    | South   |
| Cobo   | 92902    | Bronze  |
| Cranesmart Systems                             | 72016    | Gold H  |
| Curtiss-Wright Controls                        | 83534    | South   |
| FSG Sensors                                    | 72721    | Gold H  |
| GKD Technik                                    | 22807    | Central |
| Golight  | 63456    | South   |
| Hirschmann (PAT)                               | 72715    | Gold H  |
| Hoistcam                                       | 71913    | Gold H  |
| HookCam  | 1121     | Gold    |
| Load Systems International                     | 12067    | North   |
| Moba   | 32977    | Central |
| NBB Controls                                   | 73627    | Gold H  |
| OEM Controls                                   | 81406    | South   |
| Orlaco   | 4222     | Gold    |
| PAT  | 72715    | Gold H  |
| Rayco-Wylie                                    | 3878     | Gold    |
| Sigalarm                                       | 73408    | Gold H  |
| Signature Systems Group                        | 9005     | Bronze  |
| SMIE   | 71000    | Gold H  |
| Telemacanique                                  | 70803    | Gold H  |
| Trimble  | 12067    | North   |

| Tires/Tyres • Neumáticos |          |         |
|--------------------------|----------|---------|
| STAND                    | HALL/LOT |         |
| BKT                      | 22020    | Central |
| Bridgestone              | 12503    | North   |
| Continental              | 32986    | Central |
| Goodyear                 | 11527    | North   |
| Magna Tyres              | 2826     | Gold    |
| MWE                      | 20369    | Central |
| Solideal                 | 20369    | Central |
| Titan International      | 6535     | Silver  |
| Yokohama Tire            | 22231    | Central |

| Engines • Motores |          |       |
|-------------------|----------|-------|
| STAND             | HALL/LOT |       |
| Cummins           | 84406    | South |
| Deutz             | 85230    | South |
| Hatz Diesel       | 83840    | South |
| Honda             | 84834    | South |
| Kohler            | 84053    | South |
| Kubota            | 84912    | South |
| MTU               | 84529    | South |
| Perkins           | 10924    | North |

| Components • Componentes         |          |        |
|----------------------------------|----------|--------|
| STAND                            | HALL/LOT |        |
| Actek                            | 91121    | Bronze |
| ADB Hoist Rings                  | 73422    | Gold H |
| Alps Wire Rope                   | 73125    | Gold H |
| Allison Transmission             | 84206    | South  |
| Arrow Material Handling Products | 5066     | Silver |
| Auburn Gear                      | 83542    | South  |
| Axle Tech                        | 82633    | South  |
| Bonfiglioli Riduttori            | 81740    | South  |
| BorgWarner                       | 92403    | Bronze |
| Bosch Rexroth                    | 80214    | South  |
| Brand Hydraulics                 | 82952    | South  |
| Brevini                          | 82218    | South  |
| Bucher Hydraulics                | 81916    | South  |

| STAND                          | HALL/LOT   |         |
|--------------------------------|------------|---------|
| BVA Hydraulics                 | 83710      | South   |
| Changzhou Aoxuan Slew Ring     | 82156      | South   |
| Comer                          | 81630      | South   |
| Concentric                     | 80806      | South   |
| Dana                           | 84712      | South   |
| Danfoss                        | 80730      | South   |
| Dinamic Oil                    | 83216      | South   |
| DLH Fluid Power                | 83634      | South   |
| Donaldson Filtration Solutions | 83940      | South   |
| Dynamic Fluid Components       | 82813      | South   |
| Eagle Hydraulics               | 82942      | South   |
| Eaton                          | 80230      | South   |
| Enerpac                        | 1127       | Gold    |
| Force America                  | 82542      | South   |
| Gates                          | 80206      | South   |
| HAVE Hydraulik                 | 80529      | South   |
| HBS                            | 83515      | South   |
| Helac                          | 21053      | Central |
| Hydraforce                     | 80539      | South   |
| Hydrocontrol                   | 82240      | South   |
| IPS                            | 73524      | Gold H  |
| Kaydon Cooper Bearings         | 85726      | South   |
| Kessler                        | 85316      | South   |
| KTI Hydraulics                 | 80644      | South   |
| Ligon                          | 82916      | South   |
| Linde Hydraulics               | 81129      | South   |
| Maanshan FangYuan Slewing Ring | 92525      | Bronze  |
| Manuli Hydraulics              | 81152      | South   |
| Mitchell Crane                 | 73421      | Gold H  |
| North American Hydraulics      | 82118      | South   |
| Nylacast                       | 73107      | Gold H  |
| Oerlikon Fairfield             | 81015      | South   |
| Omni Gear                      | 83130      | South   |
| Parker Hannifin                | 80242      | South   |
| Poclair Hydraulics             | 81640      | South   |
| Poqutec                        | 22821      | Central |
| PowerBully/Kassbohrer          | 1428       | Gold    |
| Precision Components           | 4323       | Gold    |
| Ramsey Winch                   | 82842      | South   |
| Rexroth                        | 80214      | South   |
| Rotzler                        | 83720      | Silver  |
| Ryco Hydraulics                | 81930      | South   |
| SAI Hydraulics                 | 83501      | South   |
| Sauer-Danfoss                  | 82633      | South   |
| SSAB                           | 62239      | South   |
| Sun Hydraulics                 | 81029      | South   |
| Texas Hydraulics               | 81819      | South   |
| TGB                            | 73324      | Gold H  |
| Tieffe                         | 81654      | South   |
| TracMec                        | 73520      | Gold H  |
| Trelleborg                     | 81616      | South   |
| TWG - Tulsa Winch              | 81216      | South   |
| UTV International              | 8102/60445 | Br/Slv  |
| Warn                           | 71113      | Gold H  |
| White Drive                    | 81830      | South   |
| Wipro                          | 83506      | South   |
| Yates Industries               | 82429      | South   |
| ZF                             | 85029      | South   |
| Zinga Industries               | 81330      | South   |

| Lifting Equipment • Equipos de elevación |             |         |
|--|-------------|---------|
| STAND                                    | HALL/LOT    |         |
| Alturamats                               | 20571       | Central |
| Braden Winch                             | 83340       | South   |
| Crosby                                   | 3881/20647  | Gd/Ctl  |
| DICA                                     | 4022/20571  | Gd/Ctl  |
| Elebia                                   | 70304       | Gold H  |
| Enerpac                                  | 1127        | Gold    |
| Gearmatic                                | 83340       | South   |
| GKS Lifting and Moving                   | 22541       | Central |
| Gunnebo Johnson                          | 3033        | Gold    |
| Harrington Hoists                        | 72113       | Gold H  |
| Kinshofer                                | 4547        | Gold    |
| Lift Systems                             | 1112        | Gold    |
| LGH                                      | 2528        | Gold    |
| Lift & Hoist                             | 3880        | Gold    |
| Miller Lifting                           | 70501       | Gold H  |
| Nylacast                                 | 73107       | Gold H  |
| PACCAR                                   | 83340       | South   |
| Quality Mat Co                           | 1317/20343  | Gd/Ctl  |
| Rotzler                                  | 83720       | South   |
| RUD Chain                                | 73213/73221 | Gold H  |
| Spanco                                   | 22434       | Central |

| STAND      | HALL/LOT |         |
|------------|----------|---------|
| Swaploader | 2223     | Gold    |
| Van Beest  | 23040    | Central |
| Versa-Lift | 1422     | Gold    |
| Yoke       | 71725    | Gold H  |

| Wire Rope • Cables             |          |        |
|--------------------------------|----------|--------|
| STAND                          | HALL/LOT |        |
| Alps Wire Rope                 | 73125    | Gold H |
| Associated Wire Rope & Rigging | 70613    | Gold H |
| Bridon-Bekaert                 | 72513    | Gold H |
| Casar                          | 73012    | Gold H |
| PFEIFER                        | 1322     | Gold   |
| Samson Rope Technologies       | 71721    | Gold H |
| Teufelberger Seil              | 72106    | Gold H |
| Verope                         | 70025    | Gold H |
| WireCo                         | 73012    | Gold H |

| Associations & training • Asociaciones |            |           |
|--|------------|-----------|
| STAND                                  | HALL/LOT   |           |
| AEM                                    | 20401      | G Lobby   |
| ANMOPyC                                | 12287      | G Lobby   |
| ASME                                   | 12596      | G Lobby   |
| Bauma 2019                             | 12590      | G Lobby   |
| Bices                                  | 12286      | G Lobby   |
| China Const. Machinery Assoc.          | 11681      | G Lobby   |
| CICB                                   | 74207      | Gold H    |
| ITI                                    | 71407      | Gold H    |
| Intermat 2018                          | 20903      | G Lobby   |
| IPAF                                   | 4301       | Gold      |
| Lift Safety Zone                       | 4301       | Gold      |
| NCCCO                                  | 4301/10878 | Gld/G Lby |
| NACB                                   | 73503      | Gold H    |
| Int. Union of Operating Engineers      | 10780      | G Lobby   |
| Operating Engineers Training Ont.      | 72413      | Gold H    |
| Overton Safety Training                | 61017      | South     |
| SC&RA                                  | 12597      | G Lobby   |

| Dealers & Rental        |           |        |
|-------------------------|-----------|--------|
| STAND                   | HALL/LOT  |        |
| Bigge Crane and Rigging | 72812     | Gold H |
| CTS JASO                | 1926      | Gold   |
| Fascan                  | 3722      | Gold   |
| F&M Mafco               | 73320     | Gold H |
| Imperial Crane Services | 2329      | Gold   |
| Lampson                 | 73223     | Gold H |
| Lifting Gear Hire       | 2528      | Gold   |
| PVE Cranes & Services   | 5664      | Silver |
| Spydercrane             | 3713/3886 | Gold   |

| Scaffold & Ladders • Andamios & Escaleras |          |        |
|---|----------|--------|
| STAND                                     | HALL/LOT |        |
| Bil-Jax                                   | 3155     | Gold   |
| Instant Upright                           | 9103     | Bronze |
| Layher                                    | 62152    | South  |
| Little Giant Ladder                       | 72221    | Gold H |

| Software          |          |       |
|-------------------|----------|-------|
| STAND             | HALL/LOT |       |
| 3D Lift Planner   | 2231     | Gold  |
| A1A               | 2231     | Gold  |
| Automation Studio | 82744    | South |
| CraniMax          | 3348     | Gold  |
| LoJack            | 64507    | South |
| Sage              | 64057    | South |

| Other                        |          |         |
|------------------------------|----------|---------|
| STAND                        | HALL/LOT |         |
| Crane Hot Line               | 3880     | Gold    |
| Crane & Hoist Canada         | 73321    | Gold H  |
| Cranes & Access              | 73414    | Gold H  |
| Cranes Today Magazine        | 70925    | Gold H  |
| Equipment Parts Wholesale    | 22431    | Central |
| Historical Cons. Equip. Ass. | 10982    | G Lobby |
| KHL                          | 5922     | Silver  |
| Kran & Bühne                 | 73414    | Gold H  |
| Morooka                      | 2883     | Gold    |
| Movicarga                    | 73414    | Gold H  |
| Off Highway Research         | 22908    | Central |
| Prinoth                      | 4023     | Gold    |
| Rock & Dirt                  | 11167    | North   |
| Tenstar Simulation           | 23005    | Central |
| TGB Group                    | 73324    | Gold H  |
| TVH                          | 22431    | Central |
| Tyri Lights                  | 62129    | South   |
| Vertikal.net                 | 73414    | Gold H  |
| Wells Fargo Finance          | 11559    | North   |
| Winlet                       | 71013    | Gold H  |