

Apex 2020

MAASTRICHT
10th EDITION
9 - 11 JUNE

The International
Access Platform
Exhibition



Back to where it all began:
MECC Maastricht to host 10th edition

Maastricht



FOR MORE INFORMATION

Visit apexshow.com

Sponsored by:

access
INTERNATIONAL

Supported by:

IPAF

khl

Find us on 
facebook.com/Apexshow

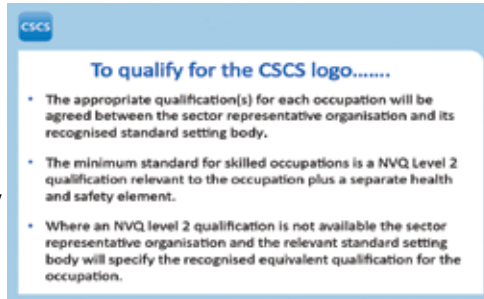
Support sought for Construction Equipment Representative Organisation

A number of employer associations and federations have joined forces to establish a new construction equipment-based sector representative organisation and are seeking support from certification bodies to establish and support its aims and objectives.

Since 2015, the Construction Leadership Council's (CLC) criteria for industry card schemes has referred to a Sector Representative Organisation to agree - along with standards setting bodies - the standard of qualifications and skills for construction related occupations. However, there has been no sector representative organisation for equipment occupations and feedback from employers has indicated that this has contributed to ambiguity, misperception and ineffectiveness in the use of equipment card schemes.

The principal employers' federations and associations which have a key interest in equipment have agreed to work together to create one. Those involved include Build UK, the Civil Engineering Contractors Association, the CPA, the Federation of Piling Specialists, the Home Builders Federation, the National Federation of Demolition Contractors and the Scottish Plant Owners Association (SPOA). The Construction Skills Certification Scheme (CSCS) - as the promoters of the single logo for all construction based card schemes in the UK - is also fully supportive of the initiative, while the CPA has agreed to administer the formation of the new organisation.

The Organisation is entitled the Plant Sector Representative Organisation (PSRO) and it has formed a board of representatives from each of the participating federations and associations to carry out its objectives and operation. The PSRO is intended to



enable a sufficient supply of individuals for equipment related occupations that have the requisite competencies following training and assessment, based on the standards defined by an employer devised framework which are both pragmatic and sustainable. The PSRO seeks support, input and contribution from all those who have a role or an interest in the supply of training, skills and competence requirements for equipment-based occupations.

As a first step, the CPA has organised a meeting on the 5th November at Nuthurst Grange, Hockley Heath - for representatives from certification bodies that offer construction equipment related cards. This will be followed by a series of open engagement meetings at which members of the PSRO board will discuss the various conditions and protocols necessary, along with a competency framework for the PSRO.

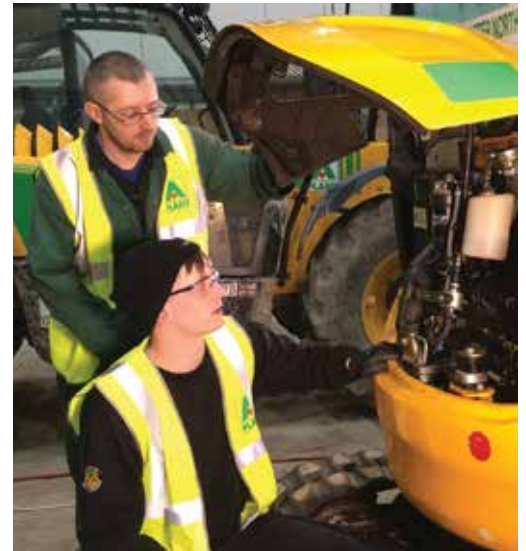
The dates for the open meetings are as follows:

Tuesday 19th November at Jurys Inn Oxford

Thursday 21st November at Mercure Haydock Hotel, Merseyside

Tuesday 26th November at Stirling Court Hotel, Scotland

All those interested in attending are invited to e-mail Jenny Lupton at jenny@cpa.uk.net with details of which meeting they would like to join.



New Construction Equipment Mechanic Trailblazer Apprenticeship

The Institute for Apprenticeships and Technical Education (IfATE) has granted approval for the development of a new Level 2 Trailblazer Apprenticeship for Construction Equipment Mechanics which will replace the current Plant Mechanic Framework Apprenticeship which is being phased out in 2020.

With approval now achieved, the next step is to seek approval to develop a Trailblazer Apprenticeship for a Technician level occupation, equivalent to Level 3 or above.

The joint chairmen of the employer-led Trailblazer working group, Ed Hudson of Liebherr and Rob Allen of Clee Hill Plant said: "We are delighted that after having our bids continually rejected over the last three years, that our latest bid for a Level 2 apprenticeship has been finally approved by the Institute, which has now recognised the uniqueness of our Construction Equipment Mechanic occupation in comparison to other Trailblazers designed for the rural, heavy goods vehicle, public service vehicle and lift truck sectors. There is still much work to do and we also need to start the process of making a submission for a Level 3 Technician occupation as well but we would like thank the input of CPA to help get us this far and to the support and perseverance of the working group from which we can work now collectively to bring this project through to fruition."

Ian Simpson adds to CPA's technical capability



Ian Simpson, through his company Langside Consulting has agreed to provide technical consultancy services to the CPA and its special interest groups, including CIG, TCIG and CHIG. A chartered mechanical engineer he brings more than 40 years industry experience, most recently as a principal specialist inspector with the Health & Safety Executive (HSE), where he was responsible for the investigation of many serious accidents arising from the use of access and lifting equipment. He has also sat on various standards committees and chaired the MHE3/11 Crane Safety Committee responsible for the BS7121 Crane Safety series of standards.

Ian Simpson