

SPT SPIDER CRANE GOES WITH UPLIFTER

German vacuum lifter company and former Maeda crane distributor Uplifter has been appointed as the European distributor for Chinese spider lift manufacturer SPT which has a range of six spider cranes from two tonnes up to 10 tonnes, along with a sub-compact 800kg tracked mini carry deck crane. Uplifter has announced that it will enter and stir up the UK market with the appointment of spider and mini crawler crane sales veteran Alan Peck as UK sales manager.



Alan Peck

The company - which ended its German distribution relationship with Kranlyft in August - says that it will launch Uplifter UPC spider cranes, branded versions of the SPT spider cranes. Overseas expansion is not new for Uplifter. It has already opened subsidiaries in Poland and the Czech Republic and works with partners in several other countries including Portugal, Spain, France and Australia through which it sells its range of vacuum/glass handling equipment including robots, which have also been handled by Kranlyft in the UK.

Peck's previous role in the lifting industry involved the opening and managing of a new depot for crane, access and glass handling rental sales and rental company Hird in Halesowen in the West Midlands. Before that he worked with Kranlyft and set up Bocker UK.



SPT's largest spider crane, the 10t 1009

ZOOMLION TO LAUNCH 186FT BOOM

Zoomlion is set to launch a new 186ft telescopic boom lift at Bauma, the ZT58J, along with two new



The new ZT58J

Lithium battery powered articulated booms. The ZT58J will go head to head with the Genie SX180 and JLG 1850SJ. The new model is said to be easier to use and more practical than the 217ft ZT68J that the company unveiled at Bauma China last year. It has yet to appear outside of China although the first unit was delivered to Shanghai Lvong Machinery Engineering last October.

The ZT58J features a five section pentagonal main boom topped by a two section 6.25 metre telescopic jib with 125 degrees of articulation, offering a 58.7 metre working height, and an outreach up to 25.5 metres, with an unrestricted platform capacity of 300kg. The maximum platform capacity of 454kg is available at an outreach of up to 22.5 metres.

The new Zoomlion compares favourably with the Genie and JLG, offering the best outreach and longest jib of the three. However, it is 2.25 tonnes heavier than the JLG and 4.65 tonnes more than the Genie. Overall transport length is longer than the Genie but slightly shorter than the JLG. Power comes from a Cummins diesel.

The two articulated boom lifts, the 52ft ZA16JERT-Li which was launched in January with standard battery pack, while the 64ft ZA20JERT-Li, is a Rough Terrain version of the ZA20JE unveiled at Vertical days.

ZOOMLION ZT58J VS GENIE SX-180 AND JLG 1850SJ

	JLG 1850SJ	Genie SX-180	Zoomlion ZT58J
Platform height	56.56m	54.86m	56.7m
Maximum platform capacity	454kg	340kg	454kg
Unrestricted platform capacity	230kg	340kg	300kg
Maximum outreach	25.03m	24.38m	25.5m
Overall weight	27,351kg	24,948kg	29,600kg
Overall transport length	14.57m	13.00m	14.40m
Jib articulation	120 degrees	135 degrees	125 degrees
Jib length	6.1m	3.0m	6.25m

NEW 70T GROVE TRUCK CRANE

Grove has launched a new 80 ton/70 tonne truck crane the TMS800-2, replacing the TMS800-E. The new four axle crane incorporates features developed for the manufacturer's larger truck mounted and All Terrain cranes, including higher capacities, variable outrigger set up, a new cab and reductions in weight, allowing more counterweight to be carried within road regulations.

The crane can carry its full 12.7 tonnes of counterweight while remaining within state axle and tyre limits. In areas with stricter roading laws, it can carry 8.2 tonnes and remain under 45.4 tonnes (100,000lbs) GVW, and 11.35 tonne (25,000lbs) axle loads. The crane has an overall width of 2.5 metres and retains the four section, 39 metre Megaform pinned boom, topped by a 10.4 to 17.4 telescopic swingaway extension with manual or hydraulic offset up to 45 degree with a maximum tip height of 59 metres.



The new Grove TMS800-2

DINGLI TO LAUNCH M SERIES BOOMS

Dingli is to launch the first models in the new M series of telescopic boom lifts covering working heights between 24 and 34 metres. It will start with the 106ft

all electric BT34ERT and diesel BT34RT with four section booms and articulated jibs for a maximum working height of 34.1 metres and a maximum platform capacity of 454kg.

Designed by Dingli's Italian R&D centre in conjunction with Magni, the M series features Dingli's modular design with lower centre of gravity, all components mounted on the side for easy to reach access and high ground clearances.

The company says that 90 percent of the main components and more than 95 percent of the structural components are common across the entire M Series line up.

The diesels will be equipped with the Deutz power, while electric models feature an 80V/520Ah high capacity lithium battery pack offering a 1.5 hour fast recharge. All units will have integrated axle type four wheel drive and are suitable for container transport.



MANITOU TAKES ATN PLATFORMS

Manitou has purchased the intellectual property of French aerial lift manufacturer ATN Platforms from the administrator CBF Associés. Its main products are wheeled and tracked mast booms. No details of the transaction have been disclosed.

Manitou will also employ around a dozen ATN employees and will continue to be based in the Tonnesins area to benefit from their expertise. ATN also produces a boom lift, a spider lift and an RT scissor lift. Product wise Manitou has focused on the mast boom product line and made no mention of the other products. There is some overlap between the Manitou mast booms and those of ATN, but the addition of the larger ATN models and its tracked machines will provide Manitou with the broadest mast boom range in the industry.

Chief executive Michel Denis said: "The purchase extends the Manitou product range in order to accelerate development in a particularly fast moving market. The experience acquired by ATN Platforms in this niche underpins the group's decision.

Our two platform production sites in Candé will assemble the ATN mast booms, in order to offer our customers an even wider choice of aerial work platform solutions."



M&M ASSETS SOLD AT AUCTION

UK crane rental company M&M Mobile Crane Hire which has gone into administration and ceased trading, selling 19 cranes up to 130 tonnes and other assets at a one day unreserved auction on September 14th, for £4.6 million.

The family run business was based in Slough, south east England with depots in Kent, Aylesbury and Welwyn Garden City. Set up in 1988 the fleet included All Terrain, City type, truck mounted and loader cranes.

M&M is just one of several crane rental companies that struggled with rising fuel costs, a shortage of crane operators and rapidly rising utilities, in a market with rental rates hardly better than 20 years ago.

WHYTE ADMINISTRATION

Scottish crane rental company Whyte Crane Services has appointed an administrator and ceased trading. The company was listed as the 26th largest crane rental company in the 2021 Cranes & Access Top 30 UK/Ireland rental companies with 25 cranes and two locations - Aberdeen and Grangemouth.

Whyte Crane Services was set up in July 2019 and took over the activities of Whyte Crane Hire which went into administration in February 2020 and for which a liquidator was appointed. The ultimate ownership of the crane business remained in the Whyte family, with Lawrence Whyte the lead director of both companies.



NEW FLAT TOPS FROM RAIMONDI

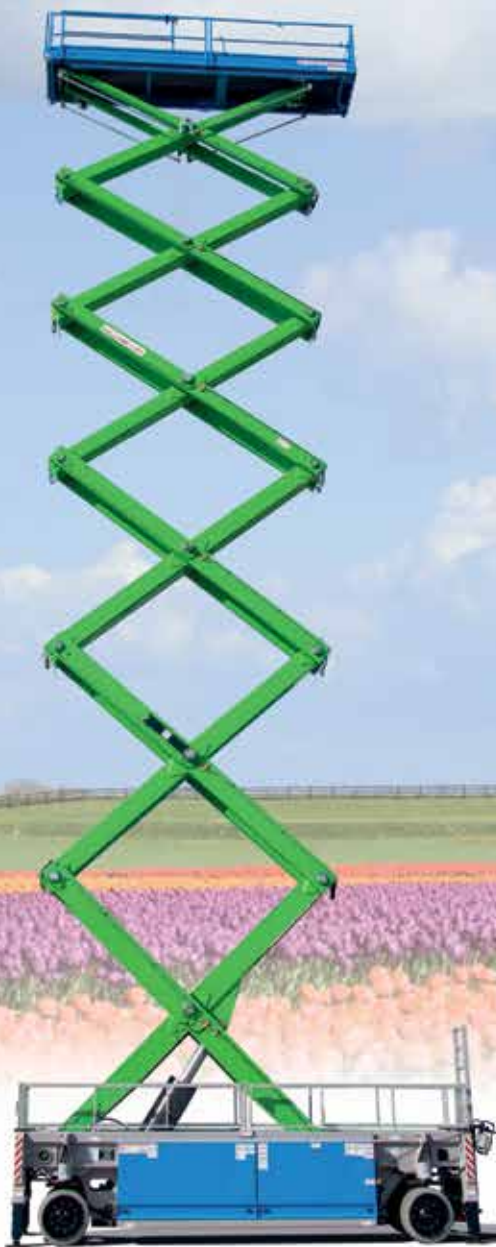
Italian tower crane manufacturer Raimondi will unveil two new flat top tower cranes at Bauma, along with a new cab design. It says that it will also announce some significant changes to its production facility.

The company has not released details of the new products except to say that it will comprise two series, with maximum capacities ranging from six tonnes to 24 tonnes with new cabs, and 'boasting many technical innovations'.

One of Raimondi's new flat tops



Come visit us at
Bauma



Even at 34 metres in the air

A Holland Lift can be used inside and out, and complies with the most stringent regulations. With our latest product additions, Holland Lift shows its dedication to be a front runner; not only in innovation but also in safety, total cost of ownership and high quality standards. The models are showed at our booth as well as some new models. Are you interested to find out more about our fully ANSI & CSA certified machines or our full range of electric rough terrain scissor lifts? Please visit our new website and stay tuned.

HOLLAND LIFT
TOGETHER TOWARDS GREATER HEIGHTS

Holland Lift International by
t: +31 (0) 229 285 555
e: info@hollandlift.com
www.hollandlift.com

bauma
OCTOBER 24-30, 2022, MUNICH
BOOTH: FS.1001/1A

BAUMA BRIEFS

With Bauma rapidly approaching, here some of the new products set to appear. See Main Bauma preview on page 51.

FIRST HYDRAULIC LUFFERS

Spanish tower crane company Comansa and Germany's Liebherr will both launch their first hydraulic luffing jib tower cranes. Liebherr is giving nothing away about its 195 HC-LH 6/12, but Comansa has been more forthcoming about its LCH300.

It features a single lift cylinder and dynamic counter jib with 16 tonnes on two falls at a radius of up to 20 metres, or eight tonnes on the single fall version at up to 40 metres radius on the full 60 metre jib, which has a jib tip capacity of up to 3.4 tonnes.



BATTERY POWERED

DINO RXTs

Dinolift is to launch all-electric battery powered versions of its 'semi self-propelled' low weight RXT boom lifts.

The new RXTE models are derivatives of the diesel RXT 4x4 low weight boom lifts, becoming the 86ft 280RXTE and 66ft 220 RXTE with a choice of either an AGM or Lithium-ion battery pack.



SENNEBOGEN'S FIRST BATTERY CRANE

German crane manufacturer Sennebogen will unveil its first battery powered telescopic crawler crane - the 50 tonne 653E Electro with new 'Dual Power Management System'.

A large electric motor drives the 653E's pumps rather than the diesel. A 210kWh battery pack allows the crane to be operated when connected to an AC outlet with any excess power used to top up the battery pack.



DINGLI GOES HIGHER

Dingli is to launch three new telescopic boom lifts - the 112ft BT36RT, the 129ft BT41RT and 139ft BT44RT - taking it towards the top end of the self-propelled boom market.

Each new lift is available in three power variants - Lithium all Electric, Hybrid with a range extender diesel generator and straight Deutz diesel - for a total of nine new models.



GENIE'S WHITE NOISE ALARM

Genie has launched a new 'Lift Guard' white noise alarm as an option on its equipment worldwide. The device provides an alternative to the traditional tonal alarm, reducing noise emissions by around 45 percent.

The new alarm works in exactly the same way as the standard alarm, sounding when the aerial work platform travels, lifts or lowers, (tilt and overload alarms are not included and remain necessarily obnoxious), however, instead of the usual shrill beeping sound, the white noise alarm makes a 'whooshing sound' which still provides a distinctive warning, but is easier on the ear, especially for those close by and dissipates quicker and travels a shorter distance than the regular alarm, thus avoiding the usual irritation to those further away.

The new alarm is available now on slab scissor and mast lifts, as well as ANSI specification telehandlers. It will be available on boom lifts and Rough Terrain scissor lifts early next year. Retrofit kits will also be available for many models.

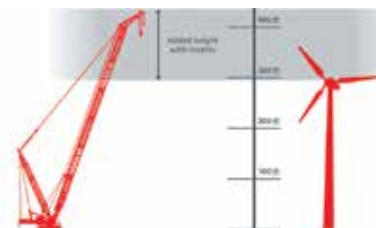
Product manager Bryan Williams said: "On busy jobsites, personnel can become de-sensitised to competing warning alarms. However, because the white noise alarm makes a sound that is directional and not penetrating, it is more obvious from where the sound is coming."



WIDE BOOM INSERTS FOR MANITOWOC MLC300

Manitowoc has launched a new Wide Boom Plus kit for its 350 tonne MLC300 lattice boom crawler crane, extending its lift height by almost 30 metres to 131 metres, when used with the VPC-MAX superlift system and extended upper boom points. The kit is made up of 3.5 metre wide boom inserts installed to the base section and topped by a transition section to which the regular boom is connected. The kit is aimed at the wind power market, where Maniowoc claims the height of onshore wind turbines in the USA has increased by nearly 60 percent over the past 20 years to an average around 90 metres as companies seek to harness more energy from a given location.

Manitowoc product manager Brennan Seelinger said: "Wind turbine work above 90 metres currently requires a 400 tonne or larger crane, with higher operating and transport costs. Our new inserts will open up more jobs for our MLC300 crane owners with added flexibility."



Step into the future

A new level of simplicity

bauma
SEPTMBER 24-30, 2022, MÜNCHEN
Stand FS 903/6

JEKKO
jekko-cranes.com



NEW MINI SCISSOR LIFT IM 5080

Light and compact
Indoor/outdoor use
Max working height 6.9 m
New ground and up control panels
Electric drive and steering
Deck extension 0.6 m



Visit us at
bauma
OCTOBER 24-30, 2022, MUNICH
Outdoor area, stand FS 906/1

imergroup.com



IMER International S.p.A. | Access Division
Via San Francesco d'Assisi 8 - 46020 Pegognaga (MN) Italy
Tel. +39 0376 554011 - Fax +39 0376 559855

HIAB 90T/M CRANE



*The new Hiab
iQ.958 HiPro with jib*

Hiab is to launch a new 90 tonne/metre loader crane - the iQ.958 HiPro - its second model in its new iQ range. The iQ.958 HiPro's nine section boom and seven section jib use the new 12 sided, V12 profile resulting in a light compact crane with a minimum width of just under two metres, allowing it to be installed on smaller trucks within the four axle 32 tonnes GVW category.

Features include Hiab's new SPACEvo control system which helps less experienced operators combine speed and precision for improved productivity, as well as VSL+ (Variable Stability Logic PLUS) that maximises the lift capacity and DLC-S (Dynamic Load Chart) which lets the operator set up the crane quicker by simulating the available load chart before setting the outriggers. The new models will also be offered in non-CE versions, equipped with the control system Space X4 and the optional CombiDrive 3 remote control.

NEW TURBINE BLADE INSPECTION ROBOT

UK company BladeBug has unveiled a new wind turbine blade robot which can inspect and repair turbine blades remotely on both onshore and offshore turbines. The six legged crawling robot avoids the need for the traditional method which involves technicians using rope access. It can be deployed to inspect an area on the turbine blade in up to half the time it would take a human rope access technician. The robot has also carried out a Lightning Protection Systems check, with the technician controlling it from the nacelle.



*The new BladeBug robot is
almost ready for the market*

Development has taken more than a year and builds on eight years of turbine robot development and trials at BladeBug. The current prototype has successfully completed its initial tests and is said to be close to going into commercial production.

ALIMAK TO ACQUIRE TRACTEL

Swedish mastclimber, hoist and façade access company Alimak is to acquire Tractel - the French international suspended platform, mastclimber (Scanclimber), work at height safety equipment and lifting tackle (Tirfor) group - from current owner Fifth Cinvén Fund which acquired the company in 2015 for €500 million in cash.

Tractel's revenues for the past year improved seven percent to €201 million and the combined business will have revenues of around €580 million.

HEAVY DUTY LUFFING EXTENSION

Grove has introduced a new heavy duty jib type extension for its three axle 150 tonne GRT9165 Rough Terrain crane. Designed for setting concrete panels and tilt-up work. The 3.8 metre long jib connects to the standard swingaway extension lugs and offers a maximum capacity of 34.3 tons/31 tonnes. It offsets/luffs hydraulically from zero to 50 degrees and has a two sheave jib tip for reeving with up to four parts of line. It is designed to work with an auxiliary hoist in conjunction with the main boom hook, to turn or tilt panels or other loads. The heavy duty jib extension is available on all new Grove GRT9165 Rough Terrain cranes and can also be retrofitted.

The jib was designed in collaboration with Wisconsin based design and build contractor Miron Construction and Grove distributor American State Equipment. Miron has taken the first production jib on its new GRT9165 saying it has a backlog of this type of work in the healthcare, warehouse, manufacturing and higher education projects. Concrete panels have grown in size with the increase in demand and now average 3.7 by 7.3 metres and weigh up to 27 tonnes (60,000lbs).

Miron executive vice president Pete Klosterman said: "It takes a larger crane to lift and rotate the concrete panels and vertically set them in place. Our precast jobs have a short duration and we wanted to minimise transport and setup costs. The GRT9165 with the heavy duty jib is the perfect package for what we need. It has strong capacities and precision for precast and other work we do."

One of the first jobs for the new jib was to set panels for a new high school in western Wisconsin. The GRT9165 was configured with its full 27.8 tonnes of counterweight and working on a maximum tip height of 38 metres at a 15 metre radius and zero degree jib offset.



The new heavy duty luffing extension



The GRT9165 with jib installed



JMG
movetosolution

**Electric
Pick&Carry
Cranes**

bauma

OCTOBER 24-30, 2022, MUNICH

**STAND
EXTERNAL AREA**

FS1103/7

JMG Cranes S.p.A.
Via Bergamo 142, 26100 Cremona - +39 0372 1786738
info@jmgcranes.com - www.jmgcranes.com



FINANCIALS ROUND-UP

MIXED RESULT FROM MANITOWOC

Manitowoc - which includes Grove, Potain and National Crane - has reported a 17% increase in first half revenues to \$956.2 million with order intake up 29% on the same point last year however pre-tax profits slumped 23% to \$17.6 million.



JCB MOVES AHEAD OF 2019

JCB's accounts filed under J.C. Bamford Excavators Ltd show a 41% jump in revenues to £3.44 billion moving above 2019 levels by more than seven percent. Pre-tax profits more than doubled to £324.5 million, a 22% increase on pre-pandemic 2019. 2021 also saw a substantial pick up in tangible net worth and working capital.



PROFIT SLUMP AT GENIE

Genie has reported a 7.2% increase in first half revenues to \$1.15 billion, with order intake of \$1.67 billion - roughly the same as last year. Operating profit fell 14% from \$91.8 million to \$78.7 million. The backlog/order book at the end of June was \$2.33 billion, roughly a year's worth of business and more than 60% up on the year.



RECORD QUARTER FOR UNITED

US based United Rentals' second quarter revenues show a sharp rise in rental operations in the face of lower new and used sales. Total revenues for the first six months improved 21% to \$5.29 billion. Pre-tax profit for the period jumped more than 67% to \$1.09 billion. Capital expenditure was \$2.04 billion in the same period.



RECORD REVENUES FOR PALFINGER

Palfinger has posted its first €1 billion half year. Total revenues for the period were €1.04 billion, up 17.5%. Pre-tax profits declined more than 14% to €75.1 million mainly due to a lower gross margin thanks to higher component and raw material costs as well as disruption to production.



TOUGH HALF FOR HAULOTTE

Haulotte's first half revenues improved 19% to €289.1 million, but pre-tax profit dropped more than 70% to €2.45 million. Order intake remains buoyant with the order book said to be at record levels.



EXPORTS DRIVE TADANO

Tadano has posted its first quarter figures to the end of June with total revenues of ¥77.7 billion (\$567 million) up nine percent on the same period last year, the highlight being strong export growth up 21% to ¥61.7 billion (\$450 million). Pre-tax profit was ¥2.3 billion (\$16.9 million) down from ¥11 billion (\$80.3 million) last year.



JLG PROFITS SLIDE

JLG owner Oshkosh recorded a 12% rise in first quarter sales to \$1.86 billion, but a 60% drop in profits to \$76.9 million due, says the company, to higher input costs which then caused manufacturing inefficiencies.



SNORKEL SALES UP - MARGINS DOWN

US based aerial lift manufacturer Snorkel increased first half revenues 23.5% to \$88.55 million, however, the higher sales generated a loss of \$7.7 million compared to a loss of \$2.2 million last year due to a sharp reduction in gross margins, thanks to supply chain and other issues.



UPBEAT FIRST HALF FOR HERC

US based Herc Rentals has reported six month revenues of \$1.21 billion, up 28% on the same period in 2021. Rental revenues increased 33% to \$1.13 billion, partially offset by a sharp drop in used equipment sales from the rental fleet, plus slower growth levels in parts and services. Pre-tax profit for the period jumped 60% to \$164.6 million with higher utilisation at the same time as rental rates improved 4.9%.

SLOW RECOVERY AT AINSCOUGH

UK based rental company Ainscough Crane Hire has filed its accounts for the year to September 2021. Total revenues increased just over 20% to £89.6 million, although business was still significantly impacted by the pandemic. It turned an operating loss of £7.8 million in 2020 into a profit of £1.3 million last year, however, higher interest costs resulted in a pre-tax loss of £1.1 million compared to a loss of £7.5 million last year.

STRONG PICK UP AT MILLS

Brazilian rental company Mills' Rental division - mostly aerial lifts and telehandlers which makes up 87% of total revenues - posted first half revenues up 47.1 percent to R417.9 million (\$82 million).



ANOTHER MEGA QUARTER FOR ASHTEAD

Anglo American rental group Ashtead - which operates as Sunbelt USA, Sunbelt Canada and Sunbelt UK - posted strong first quarter growth with total revenues to the end of July of \$2.26 billion, up 25% on the same three months last year. Pre-tax profits jumped 28% to \$527 million, capital expenditure increased 27% to \$699 million, while the full year forecast remains at \$3.3 to 3.6 billion.

STRONG SALES - LOWER PROFITS

Manitou's half year results show total revenues increased nine percent to €1.06 billion, with strong sales in all regions except Northern Europe where revenues were flat.



The order book/backlog at the end of June was €3.55 billion almost double what it was at the end of June 2021.

RECORD SALES FROM WACKER NEUSON

Wacker Neuson achieved record revenues in the first half of €1.07 billion up 15.5% on the same period last year. Compact equipment, which includes telehandlers improved 16.8% to €628.8 million. Pre-tax profit for the six months declined seven percent to €90.2 million due to supply chain issues.



VP SALE OFF

UK based rental group Vp has closed its search for a buyer, concluding that none of the interest shown met the company's objectives. Vp's controlling shareholder Ackers P Investment Company led by Vp chairman Jeremy Pilkington has said that it has no intention of selling its shares on the market for the foreseeable future.



BRIGGS TAKES GPT

Briggs Equipment has made another acquisition in Ireland, purchasing GPT - Galway Plant and Tool Hire - one of Ireland's largest rental companies. It employs around 90 people and runs a 2,800 fleet of aerial work platforms and telehandlers, plus 1,900 commercial vehicles.



800T ELECTRIC SHIP CRANE

Liebherr is expanding its heavy lift ship crane series with the all-electric, 800 tonne LS 800 E aimed at the increasing size of wind turbine components. The crane includes a new 'Master V' control unit, providing the highest possible computing power for faster data processing which enables the integration of future assistance systems and semiautomated process applications. The crane also includes the Litronic control system developed in-house for speed and precision.

The new LS (Liebherr Ship) nomenclature replaces the CBB designation with the E for the electric drive. The crane's external design has also been updated with a new white and grey colour scheme.



NEW HIAB 'RAIL' RANGE

Hiab has launched a new railway loader crane range - 'Rail' - using its advanced SPACEevo control system. The new range is designed to comply with the increasingly complex railway regulations and challenging requirements.

The range includes the iX.122, iX.142, iX.162, iX.192, iX.232, iX.262, iX.302 and iX.2758. The first in the series - the iX.122 Rail - will be unveiled later this month.

All are compliant with EN15746, EN14033, EN 50128 and EN 13849 standards. Options such as earth bonding, adjacent track and height limitations are just a few customisation options available.

The new cranes are aimed at railway infrastructure companies with the intention of providing a crane that can handle all types of lifting work from service maintenance to heavy lifting recovery operations. Hiab also claims that the new models will also provide rail wagon makers with a much greater choice of cranes.



A SIMPLE SOLUTION ALWAYS HIDES A GREAT IDEA.

S³ EVO
SMART STABILITY SYSTEM

bauma
OCTOBER 24-30, 2022, MUNICH
We'll wait for you!
Outdoor area: FS1103/10

CTE MP 24 C

PERFORMANCE:
WORKING HEIGHT 24M
OUTREACH 14M
CAPACITY MAX 250KG

MULTIPURPOSE IS BACK:
COMPACTNESS, DOUBLE TELESCOPIC AND JIB,
PLUS THE AMAZING FEATURES OF S3 EVO:
MAXIMUM SAFETY AND MAXIMUM PERFORMANCE

Tel. +39 0464 48.50.50
Fax +39 0464 48.50.99
www.ctelift.com
info@ctelift.com



Headquarter:
CTE SpA - Via Caproni, 7 - 38068 Rovereto (TN) - Italy

Factories:
Loc. Terramatta, 5 - 37010 Rivoli V.se (VR) - Italy
via E. Fermi, 2 - 37010 Affi (VR) - Italy



DINGLI & TEUPEN Jointly Develop

Brand New One-Key In-Situ Axle Expansion Technology

85% Parts Common

Main Components Adopt International Renowned Brands

Batch Standardized Intelligent Manufacturing

Standard Container Transport For The Full Range

Four Steering Modes

40% Increase In Efficiency Compared To The Same Model In The Industry

Working Height	Engine	Electric	Hybrid
44m/144ft	BT44RT	BT44ERT	BT44HRT
41m/134ft	BT41RT	BT41ERT	BT41HRT
36m/118ft	BT36RT	BT36ERT	BT36HRT



Brand New One-Key In-Situ Axle Expansion Technology
Global Patent Protection



Modular Boom Series

ZHEJIANG DINGLI MACHINERY CO.,LTD.

ADD:188 Qihang Road, Leidian Town, Deqing, Zhejiang, P.R.C

TEL:+86-572-8681688

Phone:+86-13806523131 Susan Huang

E-Mail:export@cndingli.com

Https://en.cndingli.com



Standard Container Transport



NEWS HIGHLIGHTS

■ **Norty Turner** has been appointed CEO of **Resa Power**



Norty Turner

■ **Brazil's Guindastes Tatuapé** has taken another 120t **Liebherr LTM 1120-4.1**

■ **MacGregor** is to supply two offshore telescopic cranes for **Van Oord's** new wind turbine installation vessel

■ **Adolf Lahti** and **Rauanheimo** have taken Finland's first **Konecranes 'Generation 6'** mobile harbour crane

■ **Nordic Crane** has taken five **Grove** five axle All Terrain cranes

■ **Genie's Jacco de Kluijver** has a new role as VP business development, **Will Westley** takes over as VP sales European region.

■ Dubai's **Johnson Arabia** has taken a 450t **Liebherr AT** and a range of **JLG** aerial lifts

■ **Genie** has appointed **Thibaut Itzel** as sales director Germany, Austria and Switzerland, and **Andrew Kendrick** as sales director UK, Ireland & Nordic region.



Thibaut Itzel



Andrew Kendrick

■ UK's **FGS Plant** is investing £2 million in **LGMG** scissors and boom lifts

■ **Bernhard Schröckenschlager** has acquired sales & rental company **Weiland Hebetchnik** from Weiland Group

■ Scotland's **John Maciver & Son** has taken a 60t **Liebherr AT**

■ UK's **CLM Construction Supplies** has promoted **Greg Dent** to technical director



Greg Dent

■ **Crosby BlokCam** has launched new lithium crane cameras

■ Germany's **Scholpp** has taken a 45t **Tadano AC 3.045-1 City**

■ France's **Kiloutou** is to acquire **Grupo Vendap** in Portugal and **Holbæk Lift** in Denmark

■ **Liebherr** has launched an electric 105t transshipment crane - the **CBG 500 E**

■ IUS fund manager **Ares Management Corp** has acquired Chicago's **Atlas Crane Service**

■ **Sinoboom** has promoted **Mitch Ely** to general manager Australia



Mitch Ely

■ UK's **ABA Cranes** has taken two 6t **Böcker AK 46/6000s**

■ **MacGregor** has won a €43 million order for 56 heavy lift cranes

■ Saudi Arabia's **ACT** has taken the first 700t **Liebherr LTM 1650-8.1** in the country

■ UK's **Highcliffe Engineering** has taken a **Klaas K950RHX**

■ France's **Eurolev Vertical Solution** has added three **Easy Lift** spider lifts

■ UK's **CW Engineers** has appointed **Keith John** as access & handling manager



Keith John

■ Wales' **RRR Crane Hire** has taken a 230t **Liebherr LTM1230-5.1**

■ **United Rentals** has acquired **Richbourg's Rentals** in South Carolina

■ **Fil Filipov**, owner of **Atlas cranes** and previous president of **Terex Cranes**, has died



Fil Filipov

■ **Dinolift** has launched a new telematics system 'MyDINO'

■ **Sahalift** has taken Germany's first 18m **Almac** Billennium 1890 EVO Quick-Pro spiders

■ Dutch crawler boom lift manufacturer **Rhinox** has appointed **Bradleys Group** as UK dealer

■ **Sinoboom Europe** has promoted **José Miguel Peña** to general manager



José Miguel Peña

■ **Roger Van de Weghe** of Belgian crane and access rental company has died

■ **Kranlyft** - the **Maeda** master distributor - has opened a subsidiary in Germany

■ **Bobcat Sverige** has appointed **Nordkust Maskin** as northern dealer

■ Pakistan's **Descon Engineering** has taken four new **Tadano RT** cranes in the UAE

■ Ireland's **BCS crane hire** has taken a 230t **Liebherr LTM1230-5.1**

■ Switzerland's **Wyland Lift** has taken three **Ruthmann** hybrid truck mounted lifts

■ **Inzag Germany** has taken a 90t **Liebherr LTM 1090-4.2 AT** for Ghana

■ **Ramirent** Estonia & Latvia are opening **IPAF** training centres

■ Germany's **Auto Bissinger** has taken a 50t **Tadano HK 4.050-1** truck crane



Thomas Méheust

■ **Sinoboom** has appointed **Thomas Méheust** as regional manager France

■ US **Tropical Shipping** has purchased three **Kalmar** straddle carriers

■ Germany's **Biberger Lift** has taken a 25m & 30m **Palfinger** platform

■ Texas **First Rentals** has acquired **Class A Equipment Rentals** of Fredericksburg, Texas.

■ Germany's **Gerken** has opened new premises in **Bremen**

■ Dutch company **Wagenborg Nedlift** has taken a 300t **Grove GMK6300L**

■ **Link-Belt** has appointed **Gary Plasencia** as DM for NE USA and eastern Canada



Gary Plasencia

■ UK's **McGovern Crane Hire** has taken a 25t **Kato CR-250Rv**

■ **Sarens** has opened a new facility in the **Midland-Odessa, Texas**

■ A group of UK rental companies is organising an aid convoy to **Ukraine**

■ UK's **Osprey** has appointed **Simon Massey** as MD of its Heavy Lift division



Simon Massey

■ UK's **Thanet Crane Hire** has added a 40t **Liebherr** and a 60t **Grove**

■ **Easy Lift** has delivered two 16m spider lifts to the **China Three Gorges Corp**

■ **Lee Teck Lee** has taken the first **Palfinger PK 135.002 TEC 7** in Singapore

■ **CAN** has taken the first 600t **Tadano (Demag) CC 2800-1 NT** in Ecuador

■ **Manitowoc** has appointed **Jennifer Peterson** as general counsel/co secretary



Jennifer Peterson

■ **Liebherr GB** has launched an operator training course for telescopic crawler cranes

■ Germany's **Schmidbauer** has taken an 80t **Tadano AC 4.080-1**

■ **Wisequity V** has acquired Italian lift manufacturer **Almac** and appointed **Andrea Artoni** as CEO

■ **Kevin Minton** of the **CPA** will step down as CEO at the end of the year



Kevin Minton

■ India's **Mtandt** has ordered 700 **Dingli** booms and scissors

■ Indonesia's **Pertamina** has taken two 20m **Palfinger** truck mounted platforms

■ UK's **Speedy** has appointed **Dan Evans** as CEO taking over from **Russell Down**



Dan Evans

■ **Devex** has taken the first 100t **Tadano GR-1000EX-4 RT** cranes in the Philippines

■ **Briggs Equipment** has taken Europe's first **LGMG** lithium RT telescopic booms

■ UK's **Star Platforms** has opened a depot in **Warrington**

■ **Genie/Terex** has taken a stake in **Acculon Energy**

■ Czech company **KMB Stavebni Servis** has taken three **Unic** spider cranes

■ **Hird** has taken the first 60ft **Genie S-60 FE** hybrid telescopic booms in the UK

■ Dutch company **Kuiphuis Kraanverhuur** has ordered two **Spierings 'e-Lift'** cranes

■ Canada's **Cooper Equipment Rentals** has acquired **Alberta's One Stop Rentals/Sales**

■ **Terex** has acquired Canadian concrete mixer company **ProAll**

■ Italy's **Poloniato** has taken two new five axle **Liebherr ATs**

■ **JLG** has appointed **Andy Daw** as VP global procurement and supply chain



Andy Daw

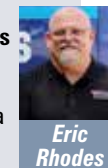
■ Philippine contractor **Geo-Transport & Construction** has taken four **Tadano RTs**

■ UK's **Hird** has closed its **West Midlands** depot

■ Switzerland's **HMT** has taken a 53ft **Haulotte HS18E Pro RT** scissor

■ Poland's **Herkules** has taken a 750t **Liebherr** lattice boom 'truck crane'

■ **CraneWorks** has appointed **Eric Rhodes** as GM of its Houston & Dallas/Fort Worth locations in Texas



Eric Rhodes

■ Scandinavia's **Nordic Crane** has taken a 250t **Tadano AC 5.250-1**

■ Saudi Arabia's **Supreme Court** has ordered a re-trial of those accused in the fatal 2015 crane incident in which 111 died

■ US **Point of Rental** is to integrate **IDScan.net's** scanning process into its software platform

■ **JLG** has appointed **Mirco Negri** as senior product manager European region



Mirco Negri

■ **Sunbelt Rentals USA** has acquired Pennsylvania's **George's Tool Rental**

■ **Beyer-Mietservice** has opened a depot in **Freudenberg**, central Germany

■ **Cosco Shipping Offshore** has commissioned a new 2,600t Leg Encircling Crane from **Huisman**

■ **Tadano** has uploaded its entire All Terrain line to **HeavyGoods** transport simulation software

■ Brazil's **Mills** has acquired earthmoving rental company **Triengel Locadora**

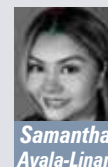
■ **Kaileys Consortium** has become Kenya's first **IPAF** certified training centre

■ Canada's **Cambie Forming** has taken a **Liebherr 280 HC-L 12/24** Litronic luffing jib tower crane

■ US's **Ruthmann Reachmaster** has appointed **Robin Paepere** as national account manager and **Samantha Ayala-Linan** as sales & marketing coordinator. **Tom Goyer** becomes VP



Robin Paepere



Samantha Ayala-Linan



Tom Goyer

See www.Vertikal.net news archive for full versions of all these stories