



TOP 30 UK & IRELAND RENTAL COMPANIES SURVEY

For many UK businesses, the past year has been one of uncertainty - dominated by the general election and a change of Government along with high but falling inflation and interest rates. This political and economic uncertainty has led many companies to adopt a 'wait and see' attitude resulting in developments being put on hold while waiting for a positive budget that brings investment and renewed confidence.



Bank interest rates remained relatively high, which, combined with the other factors has resulted in companies 'sitting on their hands' when it comes to equipment investment. Most crane, access and telehandler manufacturers have seen a slower order intake in the first half of the year although this is now showing signs of improving.

The economic challenges have been exasperated by an ongoing labour shortages, both skilled and unskilled. Even though inflation in October has fallen below the Bank of England's target of two percent, there have been significant price rises over the year, resulting in the cost of nearly all equipment increasing considerably over the past year or two.

Despite the rising prices there has been enough work with very few rental company failures although there have been a number of high profile contractor bankruptcies which will inevitably have a knock on effect for suppliers via bad debts.

The crane sector has seen very few changes to fleet sizes - Ainscough reduced its fleet by 10 units, while the King Lifting, Baldwins, Global Port Services and Bryn Thomas have added to their fleets consolidating their positions as having the second to fifth largest crane fleets in the UK.

The same is broadly true of the access rental companies. Market leader Nationwide Platforms has reduced its fleet by almost 2,000 machines over the past year, with reductions in all equipment categories. The majority of the other large fleets reported growth, including MEP Hire up 100, Summit Platforms and Star Platforms

both up around 600. Access Hire Nationwide continues to dominate the van mounted sector adding an additional 157 van mounts and investing almost £30 million over the past year.

The telehandler sector also follows the same pattern with small movements up and down among the leading companies. Ardent Hire still leads the way with almost 3,000 machines although this will increase next year as it recently announced a £50 million investment in about 750 new telehandlers from Manitou and JCB for delivery next year, which will double its 360 degree fleet to around 200 machines.

METHODOLOGY

This year we have continued to use the online questionnaire in a bid to make it faster and easier to enter the data. This has proved popular with a record number of responses received. In spite of this, it has been a struggle to obtain data from many of the usual suspects, and it has taken a great deal of chasing and cajoling by email and telephone to bring in the stragglers. For those that 'refused' to take part or simply did not supply information we have used our industry sources to include figures that we think, and hope are representative estimates.

As always, a very big thank you

to all the companies that have participated in this year's survey.

We hope that it will prove to be another useful and insightful report for our many readers both in the UK and around the world. Numerous requests from major contractors regarding its publication date indicate that it is becoming an increasingly popular tool for end users.





CRANES

Despite the economic uncertainty, increasing prices, extended delivery times, labour shortages and difficulties in moving cranes to and from site, the overall number of cranes from the five leading crane rental companies increased around seven percent. The market is also seeing the first rental companies looking at Chinese built cranes. Sany for example was

sold one of its 60 tonne three axle cranes to RRC Crane Hire.

Crawler crane rental companies have generally maintained or expanded their fleets a little after a few challenging years, possibly as a result of more infrastructure projects coming on stream or in the pipeline.



TOP MOBILE CRANE COMPANIES

Company	Total	All Terrain/ Trucks	Rough Terrain	Mobile Towers	Pick & Carry	Trailer Cranes
Ainscough Crane Hire	382 ▼	372	0	10	0	0
King Lifting	133 ▲	128	0	2	3	0
Baldwins	83 ▲	82	0	1	0	0
Global Port Services	77 ▲	72	0	0	5	0
Bryn Thomas Cranes	73 ▲	68	0	4	1	0
Kavanagh Crane Hire	68 ▲	65	0	3	0	0
City Lifting	57 -	39	0	18	0	0
Bronzeshield Lifting	56 ▼	54	0	2	0	0
Emerson Crane Hire	55 ▼	54	0	1	0	0
Davies Crane Hire	53 ▼	50	0	2	1	0
Southern Cranes & Access	51 ▲	47	0	3	1	0
Marsh Plant Hire	50 ▼	50	0	0	0	0
Sarens UK	49 ▼	44	1	3	1	0
Crowland Cranes	44 ▲	33	4	1	6	0
Dewsbury and Proud	42 ▲	38	0	0	4	0
Sparrow Crane Hire	39 ▲	37	0	1	1	0
ABA Cranes	38 ▼	37	0	1	0	0
Forsyth of Denny	37 ▲	36	0	1	0	0
East Cork Crane Hire	36 ▲	33	1	2	0	0
John Sutch Cranes	34 ▼	32	0	2	0	0
Macsalvors	33 ▲	33	0	0	0	0
Coussens Cranes	32 ▲	30	1	1	0	0
Cork Crane Hire	32 ▲	26	0	6	0	0
Emsley Crane Hire	30 ▼	30	0	0	0	0
Steve Foster Cranes	27 ▲	23	0	2	2	0
NMT Crane Hire	25 -	22	0	3	0	0
Bernard Hunter Mobile Cranes	23 -	18	0	2	3	0
Tusker Crane Hire	22 ▼	21	0	1	0	0
Dowse Crane Hire	20 -	0	0	20	0	0
RRC Crane Hire	19 ▲	16	0	1	2	0
Bob Francis	19 -	17	0	0	2	0
Thanet Crane Hire	19 ▲	19	0	0	0	0
PP Engineering	18 ▼	18	0	0	0	0
Marsden Crane Services	17 NEW	17	0	0	0	0
Bray Cranes	17 ▲	17	0	0	0	0
County Lifting Services	16 -	10	0	0	6	0
Cadman Cranes	16 ▼	16	0	0	0	0
APH Cranes	14 -	14	0	0	0	0
Stoddart Crane Hire	13 NEW	13	0	0	0	0
Cramscene	12 NEW	10	0	0	0	2
E J McGovern Crane Hire	11 NEW	10	0	1	0	0
Ellis Crane Hire	10 NEW	10	0	0	0	0
Berry Cranes	10 NEW	9	0	1	0	0

Fleet size in the past 12 months has: ▲ Increased ▼ Decreased - Remained the same



LARGEST MOBILE CRANES

Company	Capacity	Make & Model	# in Fleet
Mammoet	1,200	Liebherr LTM11200-9.1	N/D
Sarens UK	1,200	Gottwald AK 680-3	1
Baldwins	1,000	Terex Demag AC1000	N/D
Osprey Heavy Lift	800	Liebherr LTM1800D	1
King Lifting	800	Liebherr LTM1750-9.1	1
Ainscough Crane Hire	800	Liebherr LTM1750-9.1	2
East Cork Crane Hire	800	Liebherr LTM1750-9.1	1
Global Port Services	800	Liebherr LTM1800-9.1	1
Bernard Hunter	700	Liebherr LTM1650-8.1	1
Kavanagh Crane Hire	700	Liebherr LTM 1650-8.1	1
Davies Crane Hire	700	Liebherr LTM1650-8.1	1
Forsyth of Denny	650	Terex TC 2800	1
Bronzeshield Lifting	500	Liebherr LTM1500-8	1
NMT	450	Liebherr LTM1450-8.1	1
City Lifting	450	Liebherr LTM1450-8.1	1
Emerson Crane Hire	450	Liebherr LTM1450-8.1	2
John Sutch Cranes	450	Liebherr LTM1450-8.1	1
Cramscene	450	Grove GMK 7450	1
Cork Crane Hire	350	Liebherr LTM1350-6.1	1
Tusker Crane Hire	350	Terex AC350	1
Sparrow Crane Hire	300	Liebherr LTM 1300-6.3	1
Bryn Thomas Cranes	300	Grove GMK6300-L	2
RRC Crane Hire	300	Demag AC 300-6	1
Steve Foster Cranes	300	Grove GMK6300L-1	1
Crowland Cranes	300	Grove GMK6300L	1
Southern Cranes & Access	300	Liebherr LTM1300.6.2	1
Walsh Crane Hire	250	Liebherr LTM 1250-5.1	1
E J McGovern Crane Hire	250	Liebherr LTM1250-5.1	1
Dewsbury and Proud	250	Grove GMK5250XL-1	1

TOP TOWER CRANE COMPANIES

Company	Total	Rope Luffers	Hydraulic Luffers	"Normal" Self Erectors	Hammerhead/ Flat Tops
Falcon Tower Crane Services	412 ▼	140	84	74	114
Wolffkran	260 ▲	141	39	0	80
Select Plant Hire	190 ▲	135	20	0	35
London Tower Crane	185 ▼	30	80	15	60
Mantis Cranes	161 ▲	0	6	114	41
City Lifting	158 ▼	52	20	25	61
Bennetts Cranes	141 ▲	32	78	0	31
Trident Lifting Solutions	98 ▲	54	21	0	23
Uperio UK	82 ▼	47	10	8	17
Radius Group	61 ▲	35	8	0	18
Ladybird Crane Hire	60 ▼	0	0	30	30
Irish Crane & Lifting	60 -	1	0	0	59
Heathrow Cranes	53 ▼	32	8	1	12
Lewis Tower Crane Services	44 ▼	9	0	7	28
Abraham Tower Crane Hire	31 <small>NEW</small>	9	0	2	20
Sparrow Crane Hire	30 ▲	0	0	30	0



TOP CRAWLER CRANE COMPANIES

Company	Total	Spider Cranes	Telescopic	Lattice	Mini (<12t)
Weldex	157 ▲	0	51	105	1
Select Plant Hire	83 ▼	0	46	36	1
Delden Cranes	71 ▲	0	23	48	0
AGD Equipment	70 ▼	0	54	10	6
NRC Plant	70 -	0	15	30	25
Q Crane & Plant Hire	50 -	0	6	42	2
G.H. Johnson Crane Hire	41 -	0	10	31	0
BPH Equipment	35 -	0	10	25	0
Sarens UK	22 -	0	5	17	0
Jones Crawler Cranes	20 -	0	10	8	2
Stoddart Crane Hire	20 ▲	0	7	7	6
Hawks Crane Hire	18 -	0	6	12	0
Sparrow Crane Hire	17 ▲	8	1	0	8
City Lifting	14 ▲	8	0	1	5
Stoddart Crane Hire	13 ▲	0	7	0	6
Emerson Crane Hire	10 -	3	4	0	3

LARGEST TOWER CRANE IN FLEET

Company	Capacity	Make & Model	# in Fleet
Select Plant Hire	66	Terex CTL1600-66	12
Falcon Tower Crane Services	64	Jaso J780PA.64	5
Wolffkran	60	Wolff 1250B	5
City Lifting	50	Comansa 21LC 750	1
Heathrow Cranes	36	Saez SL730	1
Bennetts Cranes	45	Wolff 500B	1
Radius Group	32	Potain MR608	7
London Tower Cranes	24	Jost 416.24	5
Trident Lifting Solutions	24	Comansa LCL500-24	11
Mantis Cranes	20	Saez TLS80	2
Uperio UK	16	Terex CTt 332-16	N/D
A Abraham Tower Crane Hire	16	Terex CTT 331-16	3
Irish Crane & Lifting	16	Terex CTT 331	N/D
Sparrow Crane Hire	6	Potain IGOT 130	1
Ladybird Crane Hire	6	Potain MDT109	4

MAT & TIMBER SERVICES



CRANE MATS
OUTRIGGER MATS
TEMPORARY ACCESS ROADS
RAMPS

For all types of cranes under any application - Nationwide and Overseas



TEL: +44 (0) 1264 811005
FAX: +44 (0) 1264 810600

e-mail: mats@sarumhardwood.co.uk web site: www.sarumhardwood.co.uk

75
Years
of moving forward

Compact power – a fresh take

The 25 L and 33 L

These fast-erecting cranes combine compact design, high-performance, and the latest technology. This makes them ideal for your house building projects.

www.liebherr.com/L-cranes

LIEBHERR

Fast-erecting cranes

LIEBHERR
25 L

Your dependable partner for Powered Access



Powered
Access hire



Working at
Height
training



Safety
Innovations



Digital account
management
services



Local depots
across the UK



UK's largest
powered
access fleet



Contribution
to Safe
Working
at Height



Contribution
to Safe
Working
at Height



Innovative
Technology
Prize
(Harness ON)

 **Nationwide
Platforms**
A **LOXAM** Company



**YOUR
SAFETY
OUR
PRIORITY**



0345 745 0000
nationwideplatforms.co.uk

TOP 30 ACCESS



The powered access sector is a bit of a mixed bunch however the majority of companies expanded their fleets with movements within 10 percent or so. Nationwide Platforms remains well out in front but made a substantial purge of its fleet as it looks to reduce the average age and bring in new technology.

Access Hire Nationwide continues to dominate the van mounted sector adding a further 10 percent to its fleet which now stands at 1,730 having invested just shy of £30 million over the past year.

TOP POWERED ACCESS COMPANIES

Company	Units in Fleet	Articulated Booms		Straight Telescopic Booms		Self Propelled Slab Scissors	Mast Lifts	Mast Booms	Spider Lifts	Push Arounnds	Rough Terrain Scissor Lifts		Truck Mounts		Van Mounts	Trailer Lifts
		Electric Hybrid	Diesel	Electric Hybrid	Diesel						Electric Hybrid	Diesel	3.5t GVW	Over 3.5t GVW		
Nationwide Platforms	11,735 ▼	986	2,219	669	500	3,475	823	522	128	137	110	1,654	89	135	288	0
MEP Hire	7,400 ▲	0	0	0	0	600	0	0	0	6,800	0	0	0	0	0	0
Speedy Hire	7,343 ▼	438	352	0	35	2,510	626	323	1	2,764	0	286	0	7	0	1
Summit Platforms	6,616 ▲	611	1,361	2	367	2,011	354	176	0	323	128	1,283	0	0	0	0
AFI-Uplift	5,997 ▼	467	1,023	7	351	2,830	262	93	55	17	35	599	55	18	178	7
Sunbelt Rentals	4,827 ▲	9	897	261	234	1,650	363	0	25	865	68	455	0	0	0	0
Star Platforms	4,168 ▲	242	118	0	6	2,039	358	144	0	936	128	197	0	0	0	0
GTAccess	3,171 ▼	350	350	20	50	1,700	30	220	40	30	45	270	30	1	0	35
HSS Hire	3,040 ▼	0	0	0	0	400	60	80	0	2,500	0	0	0	0	0	0
Briggs	2,690 —	500	0	50	200	1,400	60	60	10	300	50	50	0	0	0	10
Charles Wilson Engineers	2,576 ▲	285	560	0	98	980	35	42	12	240	60	261	0	0	0	3
Advanced Access Platforms	2,427 ▲	362	33	13	44	1,026	130	42	26	663	44	42	0	0	0	2
JMS Powered Access	2,361 ▲	150	171	1	31	646	130	48	75	900	36	166	4	0	0	3
Height for Hire	2,300 ▼	350	250	0	350	700	50	40	75	150	10	73	50	40	160	2
Access Hire Nationwide	1,840 ▲	0	0	0	0	0	0	0	0	0	0	0	0	110	1,730	0
Quick Reach Powered Access	1,798 —	206	242	0	123	288	201	72	15	234	112	305	0	0	0	0
Hire Safe Solutions	1,678 ▲	0	600	0	475	500	0	20	23	60	0	0	0	0	0	0
KDM Hire	1,249 ▲	91	138	7	70	517	104	27	16	148	10	94	2	0	19	6
Elavation	1,166 ▲	488	26	0	0	432	36	12	48	62	38	12	0	0	0	12
Charleville Hire & Platform	1,123 ▲	54	62	3	46	634	85	26	2	165	2	44	0	0	0	0
Mr Plant Hire	1,020 ▲	36	19	2	0	275	51	5	4	595	22	11	0	0	0	0
JPS Platforms	895 ▲	42	43	0	2	506	56	26	4	149	1	66	0	0	0	0
OK Tool Hire	872 ▲	444	63	0	26	240	23	15	2	30	0	25	2	0	0	2
Horizon Platforms	855 ▲	91	0	0	0	485	0	124	0	155	0	0	0	0	0	0
1 Up Access	803 ▲	175	149	5	34	230	0	40	0	0	20	150	0	0	0	0
Select Plant Hire	798 ▲	7	21	0	0	555	197	8	0	0	4	6	0	0	0	0
Mainline	694 ▲	145	56	6	4	334	16	29	0	17	53	34	0	0	0	0
UK Tool Hire Group	678 NEW	54	82	2	7	222	31	31	11	33	6	86	19	0	94	0
Smiths Equipment Hire	657 ▼	83	23	0	0	300	40	30	5	100	19	53	0	0	0	4
Powered Access Services	642 ▲	72	161	0	25	214	0	12	0	3	13	142	0	0	0	0
Premier Platforms	628 ▲	90	53	0	5	265	19	28	1	26	61	76	2	0	0	2
Gwynedd Forklifts	614 ▲	48	155	0	26	160	16	41	2	8	2	154	2	0	0	0
Hird	569 ▲	201	32	4	2	203	0	13	7	50	0	55	2	0	0	0
Access Plus	530 —	60	40	0	20	310	15	20	0	40	0	20	5	0	0	0
Ord Industrial	500 NEW	26	200	0	28	120	37	12	6	22	0	48	1	0	0	0
Bella Access	475 —	60	15	0	20	350	30	15	5	50	5	25	0	0	0	0
Ashbrook	425 ▲	70	81	0	22	0	24	0	0	0	130	98	0	0	0	0
One Stop Hire	420 ▲	3	0	0	0	84	0	3	3	327	0	0	0	0	0	0
Astley Hire	335 NEW	52	0	0	0	143	45	32	0	60	2	0	0	0	0	1
United Powered Access	300 ▲	27	20	0	10	120	0	18	0	15	0	90	0	0	0	0
The Platform Hire Centre	287 ▲	31	26	0	6	140	18	24	0	14	2	26	0	0	0	0
Smart Platform Rental	267 ▲	0	0	0	0	0	0	0	0	0	0	0	228	19	20	0
Orion Access	178 NEW	45	10	0	1	20	0	4	30	4	0	8	35	21	0	0
PG Platforms	175 NEW	25	6	0	0	80	4	8	5	0	2	20	11	6	7	0

Fleet size in the last 12 months has: ▲ Increased ▼ Decreased — Remained the same

TOP VEHICLE MOUNTED FLEETS

Company	Total	Truck Mount		Straight Telescopic Booms
		3.5t GVW	Over 3.5t GVW	
Access Hire Nationwide	1,840 ▲	0	110	1,730
Nationwide Platforms	512 ▼	89	135	288
Smart Platform Rental	267 ▲	228	19	20
AFI-Uplift	251 ▼	55	18	178
Height for Hire	240 ▼	100	40	100
UK Tool Hire Group	114 NEW	19	0	94
Blade Access	108 ▲	50	50	8
Orion Access	56 ▲	35	21	0
GTAcess	31 -	30	1	0
Clearview Cleaning Services	29 ▲	2	27	0
Maps Platforms	27 -	11	1	15
PG Platforms	24 -	11	6	7
KDM Hire	21 -	2	0	19
Clerkin Elevation	20 ▼	10	10	0



LARGEST SCISSOR LIFTS

Company	Model	Working Height m	# in Fleet
Hire Safe Solutions	Dingli 3730HRT	37	20
AFI-Uplift	Hollandlift Megastar G-320	34	N/D
JMS Powered Access	JLG Liftlux 320-30	34	N/D
Nationwide Platforms	Holland Lift HL340D	34	3
Mainline	Holland Lift G320	34	4
Speedy Powered Access	Holland Lift G320	34	N/D
Reactive Rentals	Holland Lift HL330E	33	1
1 Up Access	Dingli 3214DC	32	2
Powered Access Services	Dingli 2814	28	6
Height for Hire	JLG Liftlux 245-25	26	11
KDM Hire	Holland Lift 275DS	25	N/D
UK Tool Hire Group	Dingli 2212DC	22	N/D
Charles Wilson Engineers	Dingli 2223RTB	22	14
Sunbelt Rentals	Dingli 2223DC	22	2
Dromad Hire	Dingli 2212DC	22	6
GTAcess	Dingli 2212	22	N/D
Mr Plant Hire	Dingli 222DC	22	2
Astley Hire	Dingli 2212	22	72
Powered Access Services	Dingli 2212	22	4
Summit Platforms	dingli 2223	22	4
Ord Industrial	Dingli 223RT	22	1
Charleville Hire & Platform	Skyjack SJ9664RT	22	3
Charles Wilson Engineers	Dingli 1912DC	19	8

LARGEST SPIDER LIFTS

Company	Model	Working Height m	# in Fleet
TCA Lifting	Palazzani XTJ52	52	1
JMS Powered Access	Falcon FS520C	52	N/D
Clearview Cleaning Services	Platform Basket 43T	43	1
Orion Access	Easylift R420	42	1
Hire Safe Solutions	Teupan FS420	42	1
Clerkin Elevation	Ommelift 4200RBDJ	42	1
Paramount Platforms	Ommelift 4200	40	2
Elev8 Access Platforms	Teupan Leo 36T	36	2
AFI-Uplift	Teupan Leo 36T	36	N/D
Elevation	Hinowa 33.17	33	4
PG Platforms	Hinowa 33.17	33	1
KDM Hire	Hinowa 33.17	33	N/D
Sunbelt Rentals	Hinowa 26.14	26	6
Advanced Access Platforms	Hinowa 26.14	26	4
Hird	Hinowa 26.14	26	1
UK Tool Hire Group	Cela DT25	25	1
Tracked Access	Multitel SMX250	25	2
Mr Plant Hire	Hinowa 26.14	24	1
Ord Industrial and Commerical	Teupan Leo 21GT	21	1
Newmarket Plant Hire	Hinowa 20.10	20	4
OK Tool Hire	Hinowa 20.10	20	2

LARGEST TRUCK MOUNTED LIFTS

Company	Model	Working Height m	# in Fleet
Blade Access	Palfinger P1000	102.5	N/D
Elev8 Access Platforms	Palfinger P900	90	2
Height for Hire	Bronto S90HLA	90	N/D
Nationwide Platforms	Bronto S90HLA	90	N/D
AFI-Uplift	Palfinger P750	75	N/D
Clearview Cleaning Services	Ruthmann T750HF	75	2
ACS Access	Palfinger WT700	70	N/D
Orion Access	Palfinger P570	57	1
Smart Platform Rental	Bronto 56XR	56	2
BMS	Bronto 56XR	56	N/D
PG Platforms	Ruthmann T510HF	51	1
NSS Hire	Palfinger P450	45	N/D

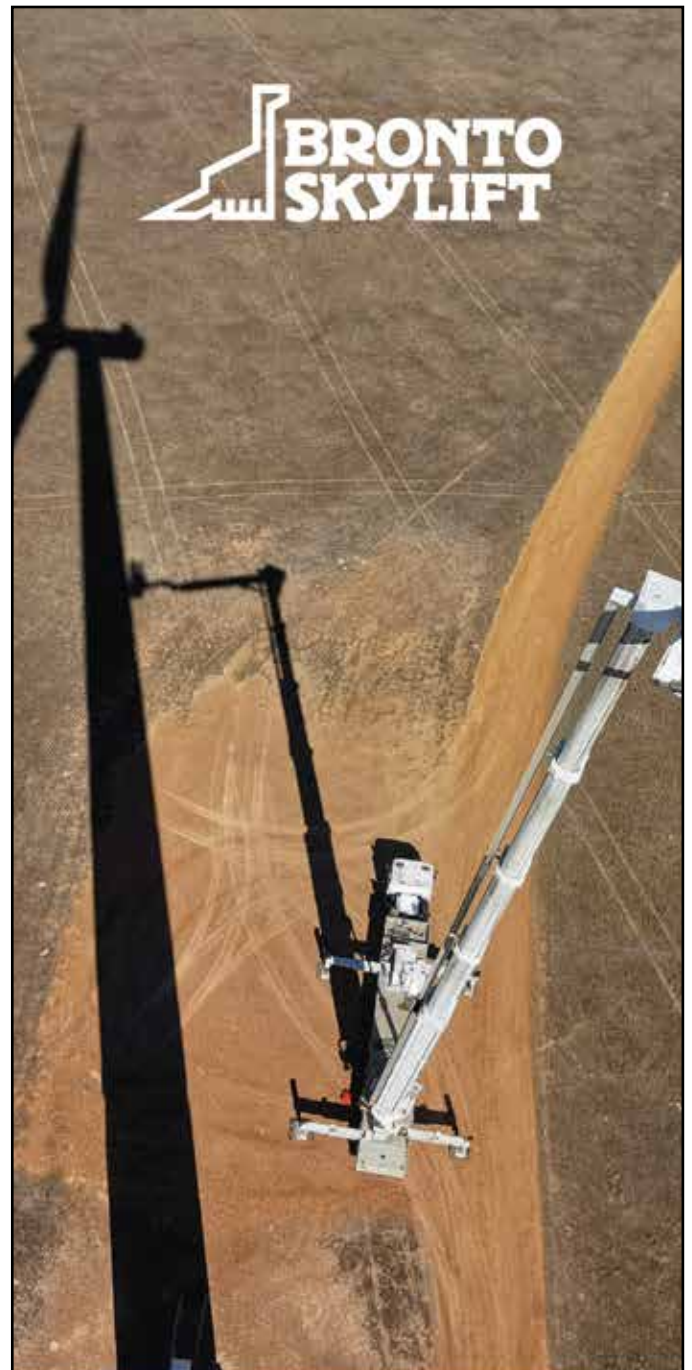


LARGEST BOOM LIFTS

Company	Model	Working Height m	# in Fleet
Hire Safe Solutions	XCMG XGS70K	70	3
JMS Powered Access	JLG1850SJ	58	1
Nationwide Platforms	JLG1850SJP	58	1
AFI-Uplift	Zoomlion ZT58J	58	N/D
Ord Industrial	Genie SX180	57	1
Hire Safe Solutions	JLG JL1500AJP	48	22
KDM Hire	Genie SX150	48	N/D
Advanced Access Platforms	Genie SX150	48	1
Mainline	JLG 1500AJP	46	8
1 Up Access	Dingli BA44	44	4
Charles Wilson Engineers	Genie ZX135	43	7
AFI-Uplift	GenieSX135	43	N/D
Gwynedd Forklifts	Genie ZX135	43	12
Sunbelt Rentals	Genie ZX135/JLG1350SJP	43	5
Summit Platforms	Genie ZX135	43	9
Charleville Hire & Platform	Genie ZX135	43	1
Powered Access Services	ZX135/70	43	4
GTAccess	Genie S125	40	N/D

PERCENTAGE OF FLEET HYBRID/ELECTRIC/DIESEL

Company	Electric %	Hybrid %	Diesel %
1 Up Access	40	20	40
Acrolift	40	50	10
Advanced Access Platforms	46	47	7
AFI-Uplift	57	6	37
APH Cranes & Access	41	6	53
Ashbrook	39	11	50
Astley Limited	91	9	0
Charles Wilson Engineers	35	25	40
Charleville Hire & Platform	81	2	17
Clearview Cleaning Services	0	5	95
Elavation	44	48	8
GTAccess	65	10	25
Gwynedd Forklifts	65	10	25
Hird	40	30	30
Hire Safe Solutions	18	13	70
Horizon Platforms	90	10	0
JMS Powered Access	40	20	40
JPS Platforms	71	8	21
KDM Hire	69	4	27
Mainline	79	7	14
Maps Platforms	10	5	85
MEP Hire	100	0	0
Mr Plant Hire	94	5	1
Nationwide Platforms	49	8	43
Newmarket Plant Hire	31	41	28
OK Tool Hire	70	2	28
One Stop Hire	99	1	0
Ord Industrial	30	30	40
Orion Access	10	40	50
Parmount Platforms	31	52	17
PG Platforms	20	40	40
Powered Access Services	40	15	45
Premier Platforms	43	20	37
Select Plant Hire	94	1	5
Smart Platform Rental	10	0	90
Star Platforms	87	5	8
Summit Platforms	16	40	44
Sunbelt Rentals	43	6	51
The Platform Hire Centre	70	10	20
Tracked Access	0	0	100
UK Tool Hire Group	45	10	45
United Powered Access	50	25	25



BRONTO SKYLIFT

SAFETY ABOVE ALL

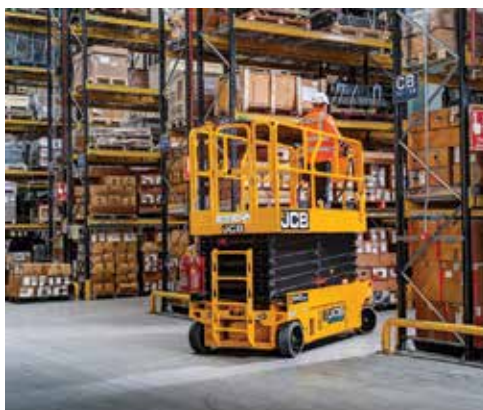
Your partner in reliable, safe and tailor-made solutions for working at height.



TOP 30 RENTAL COMPANIES

COMPANY DETAILS & INVESTMENT

Company	Investment £	Depots	Staff	# Bought	# Sold
1 Up Access	2,000,000	1	45	77	22
Advanced Access Platforms	7,048,000	6	87	N/D	N/D
Access Hire Nationwide	29,400,000	4	255	0	0
Acrolift	40,000	1	4	1	N/D
AFI-Uplift	N/D	18	318	0	0
APH Cranes & Access	450,000	1	10	10	4
Astley Limited	385,000	1	23	22	3
Charles Wilson Engineers	9,000,000	29	390	637	345
Charleville Hire & Platform	3,000,000	1	30	124	46
Clearview Cleaning Services	10,000,000	5	75	15	6
Elavation	1,500,000	2	52	22	0
GTAcess	8,000,000	12	165	0	0
Gwynedd Forklifts	2,000,000	2	60	88	66
Hird	2,396,750	3	108	77	44
Hire Safe Solutions	31,625,000	2	85	427	158
Horizon Platforms	N/D	1	75	0	0
JMS Powered Access	N/D	4	75	0	0
JPS Platforms	975,000	1	35	79	25
KDM Hire	N/D	7	235	0	0
Mainline	6,000,000	1	44	N/D	N/D
Maps Platforms	N/D	1	5	0	0
MEP Hire	8,000,000	13	275	850	100
Mr Plant Hire	1,200,000	3	67	N/D	N/D
Nationwide Platforms	N/D	30	849	N/D	N/D
Newmarket Plant Hire	350,000	6	55	15	2
OK Tool Hire	1,000,000	2	22	74	35
One Stop Hire	600,000	22	270	75	0
Ord Industrial	4,000,000	2	80	102	16
Orion Access	1,100,000	1	45	26	24
Paramount Platforms	1,316,100	2	25	5	2
PG Platforms	1,200,000	N/D	28	24	23
Powered Access Services	640,000	3	39	205	104
Premier Platforms	1,000,000	3	30	0	0
Select Plant Hire	855,000	2	16	109	14
Smart Platform Rental	3,800,000	7	92	N/D	N/D
Star Platforms	4,500,000	7	177	0	0
Summit Platforms	18,300,000	10	308	70	7
Sunbelt Rentals	9,000,000	260	4,400	531	802
The Platform Hire Centre	750,000	1	18	66	0
Tracked Access	1,100,000	1	4	11	0
United Powered Access	1,500,000	1	14	N/D	N/D





No matter your specialisation, you deserve our special attention.

The same dedication that we attribute to the manufacturing of our aerial platforms. No less than 14 models divided into six families, designed to respond perfectly to your requirements and your specific professional needs: **from tree care to the maintenance of buildings, installations and infrastructures; from restoration to work on high-voltage lines.**

Discover the advantages of the CMC range on our website.

CMC
THE SPECIALIFT

www.cmclift.com



TELEHANDLERS

While market leader Ardent maintained the size of its telehandler fleet this year, its nearest competitors made minor reductions, Ardent is now roughly twice the size as the second largest - Morris Leslie Plant Hire. Ardent looks set to

maintain or increase its leadership, having announced a further £50 million investment in 750 new telehandlers for delivery next year, while planning to more than double its 360 degree fleet to around 200 units.



TOP TELESCOPIC HANDLER COMPANIES

Company	Total	Fixed incl Compact and HD	360°	Compact	Heavy Duty	Electric	Largest Fixed	Largest 360°	Depots	Employees	Investment £
Ardent Hire	2,980 ▼	2,871	109	657	2	0	20m	35m	N/D	N/D	N/D
Morris Leslie Plant Hire	1,904 ▼	1,904	0	290	0	0	20m	N/A	15	245	N/D
Sunbelt Rentals	1,846 ▼	1,832	14	317	0	18	20m	26m	260	4,400	19,000,000
UK Forks	1,722 ▼	1,657	65	159	8	17	20m	35m	6	124	N/D
Charles Wilson Engineers	1,603 ▲	1,575	28	250	0	0	20 m	26m	29	390	18,000,000
Hessle Fork Trucks	789 ▲	733	56	48	35	0	18m	35m	4	55	6,550,000
Plant Hire UK	755 -	755	0	20	380	0	20m	N/A	1	20	17,000,000
Greenwood Hire	550 ▲	350	200	0	150	0	10m	35m	9	15	N/D
Jarvie Plant	525 -	498	38	116	381	1	20m	30m	11	205	N/D
H. E. Services	499 ▼	499	0	176	0	0	20m	N/A	11	118	30,000,000
Boles Hire	495 ▲	395	100	95	6	1	20m	51m	1	25	N/D
GT Lifting Solutions	492 ▲	195	297	30	120	0	N/D	39m	3	42	18,000,000
Plantforce	400 ▼	400	0	20	380	0	20m	N/A	7	20	17,000,000
Summit Platforms	393 ▲	393	0	N/D	N/D	N/D	N/D	N/A	10	N/D	N/D
B&T Plant Hire	360 ▲	360	0	60	0	0	18m	N/A	2	30	2,500,000
Ashbrook	328 ▲	328	0	77	0	0	N/D	N/A	N/D	N/D	N/D
Thomas Plant	320 NEW	320	0	120	0	0	N/D	N/A	5	N/D	N/D
Fairfax Plant Hire	260 ▲	260	0	100	0	0	20m	N/A	3	106	12,000,000
Chippindale Plant	236 ▼	236	0	40	196	0	N/D	N/A	8	111	7,000,000
KDM Hire	144 ▲	135	9	48	3	0	N/D	30m	7	235	N/D
Gwynedd Forklifts	138 ▲	138	0	21	0	4	20m	N/A	2	60	600,000
Hubbway Plant Hire	135 -	95	0	30	10	0	18m	N/A	1	N/D	N/D
L Lynch Plant Hire	130 -	80	0	50	0	0	20m	N/A	5	N/D	N/D
Mervyn Lambert Plant	130 -	100	0	30	0	0	18m	N/A	4	N/D	N/D

N/D Not disclosed



- NATIONWIDE HIRE & SALES
- 25 YEARS EXPERIENCE
- MERLO, MAGNI & MANITOU SPECIALISTS
- ROTATING TELEHANDLERS
- HEAVY LIFT TELEHANDLERS
- SPECIALIST ATTACHMENTS
- CONTRACT LIFT SERVICES, LIFT PLANS & RAMS
- CPC TRAINED WORKFORCE
- INDUSTRY LEADING SERVICE BACK UP

Transforming the World of Lifting



HIRE SALES OPERATORS SERVICE PARTS

THE UK'S LEADING HIRE & SALES OF ROTO & HEAVY LIFT TELEHANDLERS



MANITOU
HANDLING YOUR WORLD

MERLO

MAGNI
TELESCOPIC HANDLERS

For all your lifting requirements call GT Lifting
GTlift.co.uk 0345 603 7180

HIREDesk@GTLIFT.CO.UK | SALES@GTLIFT.CO.UK | PARTSANDSERVICE@GTLIFT.CO.UK
 DEPOTS IN GATWICK, LEICESTER, YORK, GLASGOW

GT LIFTING