

BIGGE Established 1916
CRANE and RIGGING CO.



**YOUR WORLD-CLASS
SUPPLIER FOR**

**CRANE
SALES
PARTS &
SERVICE**

**MEET WITH US AT
BOOTH #C4.625/3
TO LEARN MORE**



LIEBHERR

KOBELCO

DEMAG

ALIMAK

Link-Belt

POTAIN

Nantowoc

XTREME

TEREX



**SCAN HERE
TO SCHEDULE
A MEETING**

BIGGE.COM/BAUMA



THE BIGGEST SHOW ON EARTH

Next month the world's largest equipment exhibition - Bauma - will open its doors once again in Munich, Germany. Held every three years, the last event was delayed due to the Covid pandemic until the end of October, but two and half years later it returns to its traditional spring dates.

As always the show, which will take place from the 7th to 13th of April, breaks all records with more than 3,500 exhibitors from 57 countries spread across 614,000 square metres of exhibition space. This is the only show where you are likely to see a 1,800 tonne crane fully assembled, a massive mining truck or more telehandler manufacturers than you even knew existed.

WHAT IS THERE TO SEE?

There are a few companies not exhibiting at the show this year such as JCB, Genie and Haulotte, although you might find some of their equipment on dealer stands. However, some of those that stayed away in 2022, such as JLG, are back. And in spite of the incredible size of the show ground, there is once again apparently a waiting list for stands. Almost all of the crane, access and telehandler exhibitors have stands outside, with most back in Area FS, Freigelände Süd (Outside area South) with a few over the road in the North area - FN. The Vertikal/Cranes & Access stand is of course at the main entrance to the outside areas from the halls.

THE FULL LIST OF RELEVANT EXHIBITORS

A full list of exhibitors in our sector, along with lists of stands by main product type follows. As usual we will also be publishing the Vertikal Guide to Bauma - a bilingual guide to all lifting/lift related equipment and associated suppliers - a

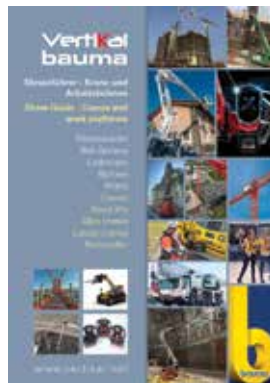
few days prior to the show opening, with printed copies available at the event itself.

A FEW HIGHLIGHTS

In the meantime, here are a few highlights that we know of, although a good number of companies are keeping the more interesting launches until the show itself - or at least the Vertikal Bauma guide.

Tadano will have a new hybrid All Terrain crane, alongside a new long-boom 250 tonne All Terrain - the five axle AC 5.250-2 with a 79 metre boom. This will also be the first time in 20 years or so that a big Demag - now Tadano - crawler crane has been displayed at Bauma - with the launch of a new 1,250 lattice crawler. Don't forget its new acquisitions either which include Nagano, Manitex, Oil & Steel, and Valla. Tadano branded Nagano machines will be on the stand however the latter three companies will be shown separately, given that the stands were already booked.

Liebherr is keeping quiet about what might be its main new product launch. All we know is that it is some form of new drive train - for its All Terrains or a hybrid or direct electric drive for its unplugged



bauma
APRIL 7-13, 2025, MUNICH



A few facts/details

Where:

Munich's Messe München - the showground due east of the city centre.

When:

Monday April 7th to Friday 11th 09:30 - 18:30
Saturday April 12th 08:30 - 18:30
Sunday April 13th 09:30 - 16:30

Tickets:

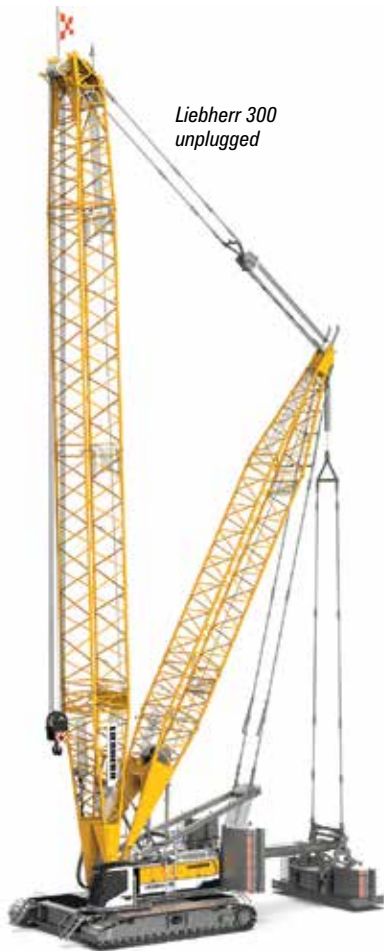
Day ticket: €38
Three day ticket: €79
Permanent ticket: €98

Note: these tickets only allow one entry a day - if you leave the showground it will not get you back in!

You will probably be better off speaking to one of your suppliers that has a stand at the show, they should have guest tickets or can get you one - and almost certainly for free.

Getting there:

This year's Print@home ticket includes free use of local public transport - MVV ticket for zones M-6. You will need to show a passport or identity card.



Liebherr 300 unplugged

crawlers? It refuses to say. But it will launch a larger 'unplugged' crawler crane in the form of the 300 tonne battery powered LR 1300.2 SX, two new sixth generation telehandlers, the T 38-7s and eight metre/4,200kg T 48-8s and plus two new luffing jib tower cranes, the 440 HC-L and 620 HC-L 1, both of which are available with up to 36 tonnes capacity. You can also catch the 1,800 tonne LR 18000 lattice crawler and new MK tower crane.

Manitowoc will highlight after sales services but has the new Potain 309 on the stand along with a working version of its hybrid system for All Terrains on the 150 tonne GMK 5150 which charges when on the road in between jobs. Also look out for a new charging system for its small Potain self-erectors.



Grove GMK 5150



Sinoboom

Sennebogen has two new products to watch out for - the all-new 200 tonne 6203E telescopic crawler crane, with a Grove version on the way, and the six tonne 360 G heavy duty telehandler which is well worth a look. It has also agreed a deal to supply Linde with telehandlers on an OEM basis.

Link-Belt has nothing spectacular planned - that we know of! But you will see its 90 tonne 100|RT Rough Terrain, and the 110 tonne 120|HTLB long boomed, 60 metre truck crane. Stop by the Jekko stand and prepare to be amazed by a massive display of new technology on its latest spider cranes, as well as a new concept of mini crawler crane with three operating modes including a tower feature with a 10 metre radius at a height of 17 metres - a must see machine!



Jekko

You might not think that jacking systems and lifting gear sounds very exciting, but Enerpac has taken a huge stand and will have, what can



XCMG

only be described as a lifting gear theme park. Definitely worth a detour.

When it comes to Chinese cranes, progress still seems slow, but there is progress with the three majors still trying to gain a toehold in the European market. Sany has specifically targeted the German speaking market so expect a bold display with several cranes including its new 200 tonne electric lattice crawler, possibly its new 80 tonne SCE800TB-EV telescopic crawler, a new 120 tonne four axle European All Terrain and a 45 tonne RT. XCMG will show the four axle XCA80G7-1E and final production version of its three axle all electric cranes. It is also likely to have its big booms on show and possibly a new spider lift.

Finally, Zoomlion has not said much about cranes this year but will have truck and All Terrains on show. It is likely to have a stronger focus on its aerial work platforms with several new models including its 265ft ZT82J telescopic boom lift which is due to go into production this summer. It will also use the event to talk about its new plant in Hungary.

On the telehandler front there is much to see, sadly not from JCB but Manitou will unveil two new lithium battery models, probably a 12 and 17 metre but it is being coy. It will also show a new, larger 360 degree model - hints suggest it is a really big machine.



Manitou

Sany will show a new six metre/2,400kg compact all electric, while on the Wacker Neuson/Kramer stand you will find a new higher capacity, 3,100kg/six metre compact with all new tech. On the Zepelin/Cat stand you will have the first chance to see the Faresin-built Zepelin branded telehandlers now that Cat has abandoned the European telehandler market.

Nothing new from Bobcat but showing the same compact prototype we saw at Intermat, Magni on the other hand always under promises and over delivers. It will have several new models as it completes its fixed frame range and unveils a new line of Rough Terrain/industrial forklifts. If you have not seen its aerial platforms this will be your chance, definitely a stand not to miss. And finally for a complete surprise, head to the Hidromek stand in the North area where the Turkish company plans to introduce its first telehandler.

Most of the mastclimber manufacturers will be at the show, including Alimak with a very interesting new 650 hoist, and sister company Scanclimber's new range of attachments - they are mind blowing and interesting.

Moving to aerial lifts, JLG is pushing many new products as it returns to Bauma, showing a new 45ft compact, a new 65ft telescopic for the US market, two new articulated booms, new Lithium AC scissor lifts, improved telematics and its first lighting towers. On the same stand you will find Hinowa and the new 30 metre TC30 telescopic spider lift with a 15 metre outreach and up to 300kg platform capacity. Ausa - which it acquired last year - was already booked on a separate stand.

Dingli always downplays its new product introductions, but has a plenty to see - you might also find a MEC or two on the stand?

Multitel will highlight its all new 16 metre pick-up mounted platform, alongside its new 3.5 tonne 250 and 270s and a 'big' truck mount? GSR can

Alimak



JLG

Multitel



PLATFORM BASKET

VISIT US:
 STAND FS 1103/2
 OUTDOOR EXHIBITOR AREA
bauma
 APRIL 7-13, 2025, MUNICH

RELIABILITY, STRENGTH
 AND HIGH TECHNOLOGY

RAISING THE STANDARDS

Platform Basket offers an unrivalled range of aerial working platforms, globally recognized for their versatility, ease of use and reliability.

PLATFORM BASKET

Via Montessori, 1 - 42028 Poviglio (RE) Italy
 Ph. +39 0522 967666 - Fax +39 0522 967667
 E-mail: info@platformbasket.com

platformbasket.com
MADE IN ITALY

be found on the Rothlehner stand and has several new developments to discuss. CMC and Platform Basket are two other Italian manufacturers with big plans - check out the home-made Cannoli on the CMC stand.

One stand that will be highlighting a big truck mount is Bronto with the first model in a new XT Generation product line, starting with the 70 metre S70XT1-J.

Sinoboam will show some of the vast array of new models unveiled at its Changsha plant as the end of last year. A large number of its new

Mote Lift



Merlo has new Rotos

units will be European built from non-Chinese fabrications and components. Noblilift recently announced that it was going to get serious about the aerial lift market, so you can expect a big effort so it will be worth checking out.

And once again a new Turkish entrant is debuting on the international stage, in the form of new manufacturer Mote Lift. It already has a six unit line up and on paper they look very good. Will they be so attractive in the iron - there is only one way to find out...

Sadly, we simply do not have enough space here to cover all the new and exciting product launches. But closer to the show you can download or pick up a printed version of the

Vertikal Guide to Bauma, a whole magazine dedicated to the Crane, Access and Telehandler exhibits at the show. ■



Wolffkran

EXHIBITOR LIST BY MAIN TYPE

Cranes	Stand No	Unic	FS.1102/5	Next Hydraulics	B4.330	Aerial work platforms	Stand No	Multitel Pagliero	FS.1102/10
AlmaCrawler	FS.1102/1	Uplifter	FS.1101/6	Palfinger Cranes	FN.720/12	Airo	FS.1102/1	Niftylift	FS.1003/2
BG Lift	FS.1103/8	Valla	FS.1203/1	PM	FS.1203/1	Aichi	FS.1102/1	Noblilift	FS.1101/3
Bigge Crane & Rigging	C4.625	Zoomlion	FS.905	World Power	FN.919/2	AlmaCrawler	FS.1102/1	Oil&Steel	FS.1203/1
Delta Cranes	FS.1001/12	Tower cranes	Stand No	Foundation cranes	Stand No	Altec - Teupen	FS.1204/6	Omme Lift	FS.1102/1
Galizia	FS.1104/7	Baukrane	B3.410	Bauer	FN.519	AXCS/ELS/Hy-brid	FS.1101/8	Palazzani	FS.907A/1
GGR Unic	FS.1102/5	BBL Cranes	FS.903/9	Casagrande	FN.520/9	Axolift	FS.1103/3	Palfinger Platforms	FS.1203/4
Grove	FS.1202/2	Comansa	FS.1103/1	Mait	FN.621/9	Böcker	FS.1203/2	Platform Basket	FS.1103/2
Henan - SPT	FS.1101/6	Eurogru	FS.1002/10	Soilmec	FN.521/9	Bluelift	FS.1107/9	Paus	FM.713/9
Hoeflon	FS.1104/5	Everdigm	FS.1106/2	Telehandlers	Stand No	Bravi	FS.1104/6	Power Towers/JLG	FS.904/9
HSC Cranes/Sumitomo	FS.903/1	FB Gru	FS.902/2	Ausa	FM.710/3	Bronto Skylift	FS.1203/3	Qiyun	FN.319/1
Idrogru	FS.1001/12	FM Gru	FS.1002/2	AXCS/ELS/Hy-brid	FS.1101/8	CMC	FS.1203/5	Raptor - Socage	FS.1204/10
Jekko	FS.903/6	Jaso	FS.1003/8	Bobcat	FN.816	CO.ME.T	FS.1004/10	Rothlehner	FS.1003/9
JMG	FS.1103/7	Kroll Cranes	FS.1002/8	Caterpillar/Zeppelin	FM.60B.5	CTE	FS.1103/10	Ruthmann	FS.1107/9
Klaas	FS.901/6	Krupinski Cranes	FS.902A	Dieci	FS.1108/1	Custers	B3.106	Sahalift	FS.1102/1
Kobelco	FN.1016/1	Liebherr	FM.813	Faresin	FS.1109/9	Denka	FS.1003/9	Sany	FN.619
Kranlyft	FS.1003/1	Midi Cranes	FS.902/4	Gehl	FS.908/1	Dingli	FS.904/5	Sinoboam	FS.1002/7
Liebherr	FM.813	Moritsch Cranes	FS.902/6	Giant - Tobroco	C6.211	Dinlift	FS.1205/3	Skyjack	FS.1102/2
Link-Belt	FS.903/1	Potain	FS.1202/2	Hidromek	FN.918/1	Easy Lift	FS.1003/9	Socage	FS.1204/10
Locatelli	FS.1101/10	Saez	FS.1104/1	JLG	FS.904/9	ELS	FS.1101/8	Stellar Industries	FN.922/9
Maeda	FS.1003/1	Sany	FN.619	Kramer	FN.916	Everdigm	FS.1106/2	Sunward	FN.618/10
Manitex	FS.1203/1	Speed Crane	C2.126	Kubota	FN.1017/1	France Elévateur	FS.1107/9	Tadano	FS.1205
Manitowoc	FS.1202/2	Stafford Tower Cranes	FS.1103/5	LGMG	FS.1105/1	GSR	FS.1003/9	Teupen	FS.1204/6
Marchetti	FS.1004/14	TKA Cranes	C4.748	Liebherr	FM.813	Hinowa/JLG	FS.904/9	Uplifter	FS.1101/6
Ormig	FS.1006/7	VD Cranes	C2.126	Linde - Sennebogen	FM.712	Horyong	B5.221	Versalift	FS.1107/9
Palazzani	FS.907A/1	Wilbert/Zoomlion	FS.905	LiuGong	FN.718/3	Hy-brid/Custom/AXCS	FS.1101/8	XCMG	FS.1005/4
Palfinger Cranes	FN.720/12	Wolffkran	FS.902/7	Magni	FS.1108/3	Imer	FS.906/1	Zoomlion	FS.905
PV-E Crane	FS.1002/4	Zoomlion	FS.905	Manitou	FS.908/1	JLG	FS.904/9	Mastclimbers/hoists	Stand No
Sany	FN.619	Loader cranes	Stand No	Merlo	FS.1209/1	Klaas	FS.901/6	Alimak	FS.1003/5
Sennebogen	FM.712	Amco Veba	FN.921/2	MST	C4.503	Klubb	FS.1205/3	Dingli	FS.904/5
Spierings	FS.1002/1	Atlas	FM.713/2	Noblilift	FS.1101/3	Kuli Helmut Kempkes	A1.337	Electroelsa	FS.1104/9
SPT	FS.1101/6	Bonfiglioli crane	FN.822/3	Sany	FN.619	Leguan Lifts	FM.710/5	Elevek - Ciclo Fapril	FS.1004/8
Sumitomo Crane	FS.903/1	Cormach	FN.722/9	Sennebogen	FM.712	LGMG	FS.1105/1	Geda	FS.1004/1
Sunward	FN.618/10	Erkin World Power	FN.919/2	Sinoboam	FS.1002/7	LiuGong	FN.718/3	Horyong	B5.221
Tadano	FS.1105/8	Fassi	FN.920/2	Skyjack	FS.1102/2	Magni	FS.1108/3	Jaso	FS.1003/8
Tecno-Gru	FS.1001/3	Ferrari	FN.920/10	Sunward	FN.618/10	Manitex	FS.1203/1	Maber	FS.1204/1
Terex - Tecno Gru	FS.1001/4	Hyyva	FN.921/2	Tobroco-Giant	C6.211	Manitou	FS.908/1	Mace Industries	FS.1004/6
		MKG	FN.923/4	Wacker Neuson	FOE.ICM 201	Mantall	FS.1204/3	Saeclimber	FM.708/1
				XCMG	FS.1005/4	Moog	FS.1101/5	Scanclimber	FS.1003/5
				Zeppelin Rental	FM.709/5	Mote Lift	FS/1003/6	Stros	FS.1204/7
						Movex (Talleres Velilla)	FS.1107/9	Zoomlion	FS.905

XT

Up, Over and Beyond

The new XT is Bronto's DNA perfected. When the job demands the best, Bronto XT delivers. With a dependable reach for demanding tasks, it's built to take you up, over and beyond.

The XT is ready for the challenge. Are you?



DON'T DELAY

HAVE YOU BOOKED YOUR STAND?

10th and 11th
September 2025,
Newark
Showground,
Nottinghamshire



Vertikal Days 2025 will return to Newark Showground, Nottinghamshire on 10th & 11th September.

Over 2500 lifting equipment professionals visit Vertikal Days each year to see the very latest cranes, access platforms and telehandlers, innovations and associated products.

If you want to get in front of key buyers, end users and purchasing influencers, Vertikal Days is the place to be in 2025.



Exhibitor registration is open <https://vertikaldays.net> Email the team: contact@vertikaldays.net

BOOK TODAY!